



STONY LANE, BURTON, DORSET BH23 7LB

Mitchells
1963 — TODAY



A spacious detached house of over 1300 sq ft featuring generous room sizes, light and airy living accommodation and benefitting from a private, sunny rear garden, off road parking for multiple vehicles and a single garage.

This lovely home has been completely refurbished and features versatile accommodation comprising of four bedrooms, large lounge and a fabulous open plan kitchen/dining/ room leading onto the garden. Located in the village of Burton, offering close proximity to the New Forest National Park and the coastal town of Christchurch.

FOUR BEDROOMS • FAMILY BATH/SHOWER ROOM • KITCHEN/BREAKFAST ROOM

SEPARATE LOUNGE/DINER • DOWNSTAIRS W/C

GARDEN • GARAGE

OFF ROAD PARKING



The Property

- Spacious detached house of nearly 1330 sq ft
- Completely refurbished throughout
- Four bedrooms (one ground floor)
- Brand new family bathroom and downstairs w/c
- Refitted modern kitchen with some integrated appliances
- Spacious lounge with feature log burning stove
- Sunny rear garden mainly laid to lawn with patio seating area
- Driveway parking for multiple cars and single garage
- Gas central heating and uPVC double glazed windows
- Council Tax Band 'E' - £2,777.61
- EPC rating 'C'

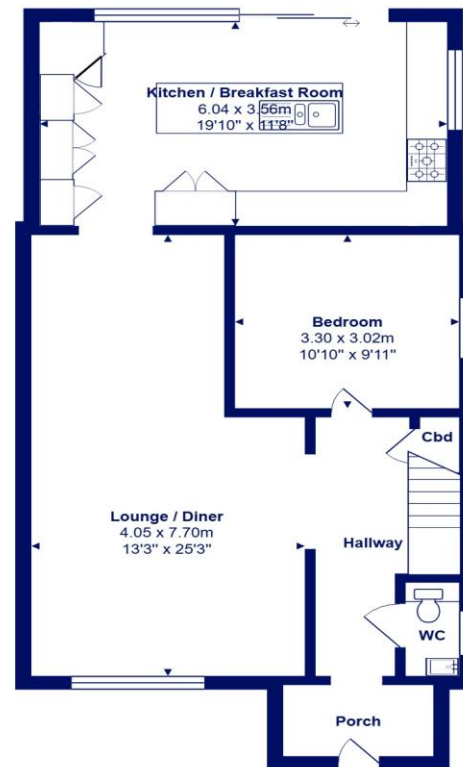




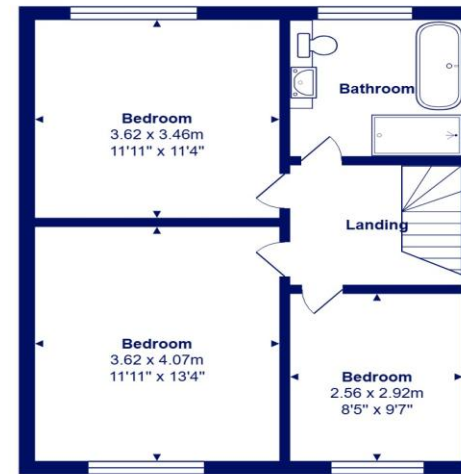
Location

Christchurch is a beautiful, vibrant and historic town with its 11th century priory, quay/harbour, ancient castle ruins and various shops, cafes, restaurants and bars. The Town is well served for transport links with a main line railway station to London/Waterloo being just under 2 hours and Bournemouth International Airport about 5 miles distant. Excellent infant, junior and senior schools are also within easy reach as is the stunning the New Forest National Park.





Ground Floor



First Floor



Total Area: 123.3 m² ... 1327 ft² (excluding garage / store)

All measurements are approximate and for display purposes only







mitchells.uk.com
mudeford@mitchells.uk.com
01202 499295

Mudeford
Cambridge House
112-114 Stanpit
BH23 3ND

