



*8 Chewton Oaks, Ringwood Road, Walkford, BH23 5RD      £420,000*

**Mitchells**  
1963 — TODAY







# *Ringwood Road, Walkford*

A simply stunning apartment of about 840sqft that forms part of this fabulous, high specification development completed by Tuakana in 2018. The attention to detail here is outstanding with lavish communal areas, designer fittings internally and superb communal gardens with residents having a private summerhouse for garden furniture storage/drinks fridge etc. Chewton Oaks is architecturally superb with wonderful brickwork, oak detailing and beautiful gardens and grounds. In our opinion, Chewton Oaks is one of the smartest apartment blocks on the area and never fails to impress prospective buyers. Apartment 8 can be sold fully furnished if required.

- TWO BEDROOMS • TWO BATH/SHOWER ROOMS (ONE EN-SUITE) • KITCHEN/LIVING/DINING ROOM • COMMUNAL GROUNDS & GARDENS • SUMMERHOUSE • ALLOCATED PARKING •





## The Property

- Immaculate first floor apartment in show home order
- Two spacious double bedrooms with bespoke fitted wardrobes
- Large, open plan kitchen/living/dining room with large sash style windows
- Quality fitted kitchen with Quartz worktops, integrated appliances and attractive flooring
- Two designer bath/shower rooms with stylish ceramic tiling
- Gas fired underfloor heating, passenger lift and vide entry system
- Allocated parking and visitors parking
- Private summerhouse that enables residents to fully access the communal gardens, electric inside so drinks fridges etc can be utilised
- Maintenance TBC
- Leasehold 992 years remaining (999 years)
- Managing Agents: Burns Hamilton
- Council Tax 'D' £2287.80
- EPC 'B'



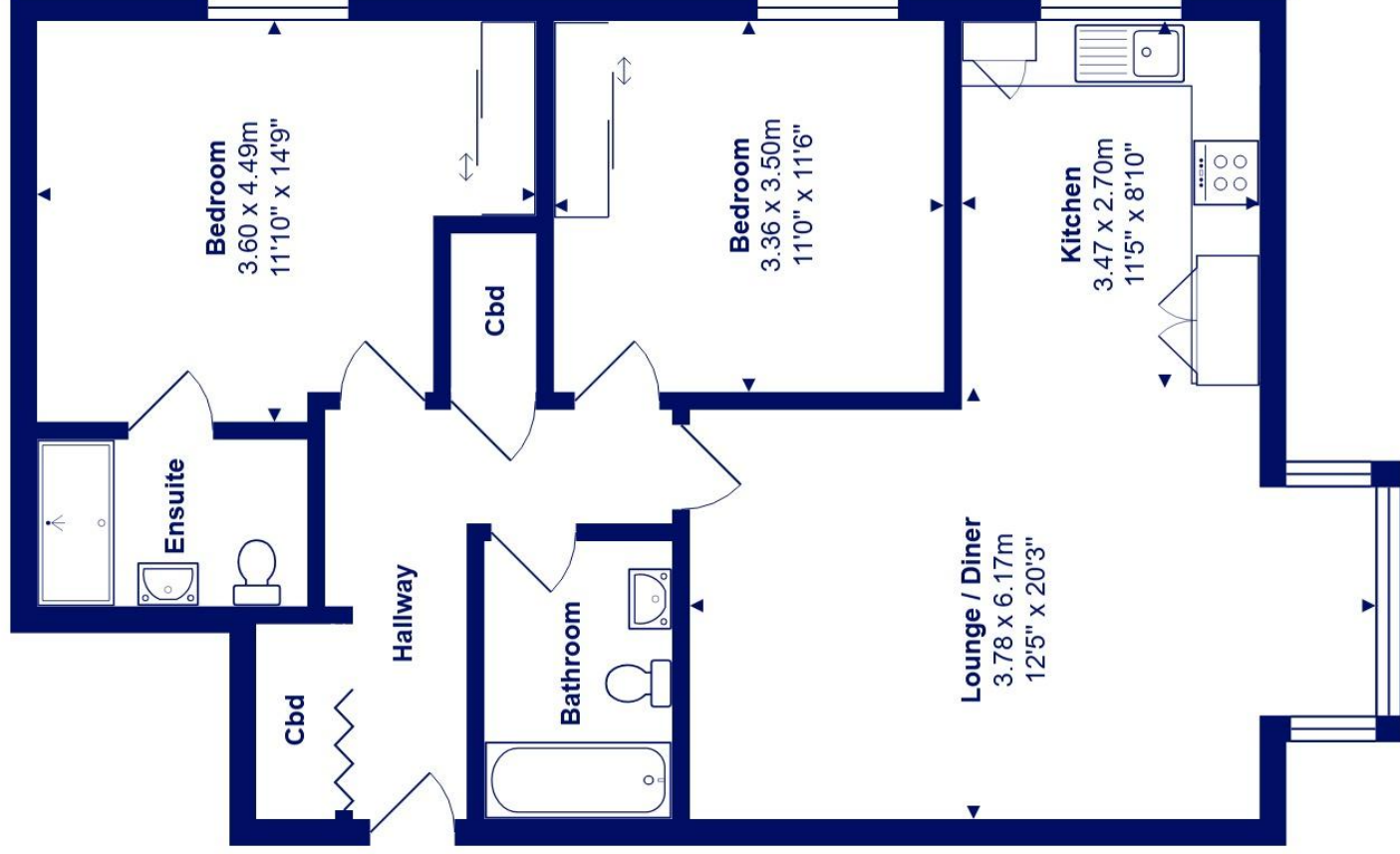




## Location

Walkford is a small village in the borough of Christchurch, Dorset. The village lies about a mile distant from a picturesque stretch of Solent coastline with views over Christchurch Bay to the Isle of Wight. Situated in this popular location close to the main line railway links to London (in under two hours) excellent schools, local pubs and walks across the local fields and farmland of Hinton and the popularity of the Chewton Glen Hotel.





Total Area: 77.3 m<sup>2</sup> ... 832 ft<sup>2</sup>

All measurements are approximate and for display purposes only











[mitchells.uk.com](http://mitchells.uk.com)  
[highcliffe@mitchells.uk.com](mailto:highcliffe@mitchells.uk.com)  
01425 272206

Highcliffe  
284 Lymington Road  
Highcliffe on Sea  
BH23 5ET

