



PIPERS DRIVE, MUDEFORD, DORSET BH23 4TR

Mitchells
1963 — TODAY



An outstanding home of about 1550 sq ft, situated on the edge of this smart development boasting a crisp, contemporary interior with stylish fittings and a superb detached double garage with first floor office. This superb home features brilliant open plan living space, driveway parking for multiple vehicles and a wonderful south facing wrap around garden

FOUR BEDROOMS • TWO BATH/SHOWER ROOMS (one en-suite)

KITCHEN/DINING/FAMILY ROOM • SEPARATE LOUNGE

DOWNSTAIRS W/C • UTILITY ROOM

WRAP AROUND GARDEN • DOUBLE GARAGE with MEZZANINE/OFFICE

DRIVEWAY PARKING FOR MULTIPLE VEHICLES



The Property

- Executive style house, skilfully extended with first class accommodation
- Master bedroom with luxury en-suite
- Three further bedrooms and family bathroom
- Impressive open plan kitchen/dining/living space with quality kitchen and quartz appliances
- Spacious lounge
- Separate utility and very useful boot room/entrance
- Wrap around south facing garden with all day sun and a high degree of privacy
- Great spot, right by the open space of Mudeford Wood and strolling distance of the beach
- Mudeford and Highcliffe school catchment
- Driveway parking for multiple vehicles plus planning permission granted to change garage into games room with w/c
- Council Tax Band 'F' - £3,361.65
- EPC rating 'C'

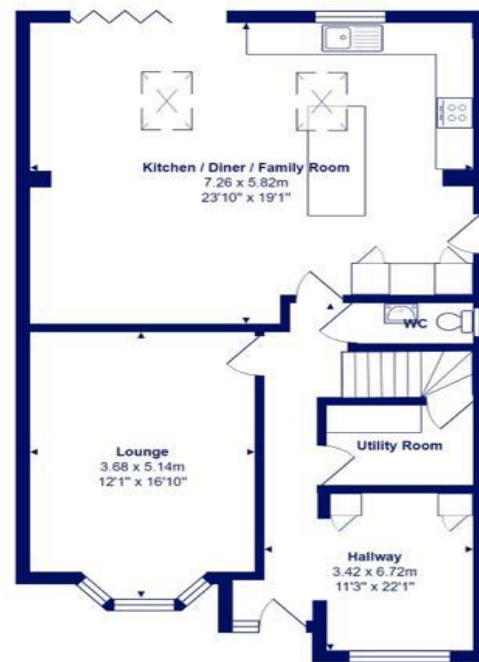




Location

Mudeford began as a small fishing village close to the entrance of Christchurch Harbour which still sees fishing boats landing their catch today. The area enjoys award winning sandy beaches at Avon beach and plenty of wildlife activity on Hengistbury Head and Stanpit Marsh Nature Reserve. The popular Mudeford Sandbank attracts visitors every year to the private beach huts with the Harbour providing a sheltered environment for water sports activities. With a friendly, community feel, it is no wonder Mudeford is a popular choice for relocation.





Ground Floor



First Floor



Ground Floor



First Floor



Total Area: 144.0 m² ... 1550 ft² (excluding garage, mezzanine office)

All measurements are approximate and for display purposes only







mitchells.uk.com
mundeford@mitchells.uk.com
01202 499295

Mundeford
Cambridge House
112-114 Stanpit
BH23 3ND

