



10 Maryland Court, Milford on Sea, SO41 0UZ

£350,000

Mitchells
1963 — TODAY



*10 Maryland Court
Milford on Sea
Lymington
Hampshire
SO41 0UZ*

This fantastic top floor, two-bedroom apartment is situated on Milford clifftop, walking distance of the village centre and, and a short walk of the beach. The property offers bright and spacious rooms, with features including stunning sea views, a private balcony, a south-facing living room, a share of the freehold, and a garage in a nearby block.

- Top Floor Apartment
- Two Double Bedrooms
- Sitting/Dining Room
- Kitchen
- Bathroom
- Private Balcony
- Garage In A Nearby Block
- Communal Gardens
- Share Of Freehold



The Property

The front door opens into the entrance hall, which leads to a lovely south-facing sitting/dining room with a private balcony offering panoramic sea views, stretching from the Isle of Wight to Old Harry Rocks.

The kitchen is fitted with a range of solid wood shaker style wall and base units, with a contrasting worktop, built-in appliances, and a UPVC window.

There are two double bedrooms, with the master bedroom enjoying sea views.

The bathroom is particularly generous in size, with part tiled walls and a white suite comprising a pedestal wash hand basin, WC, panelled bath with mixer tap over, and a freestanding shower cubicle.

The property benefits from a share of the freehold, with a remaining excess of 143 years. Maintenance costs are to be confirmed.





Gardens & Grounds

The property is surrounded by beautifully maintained gardens and includes a garage in a nearby block, with an up and over door.

Services

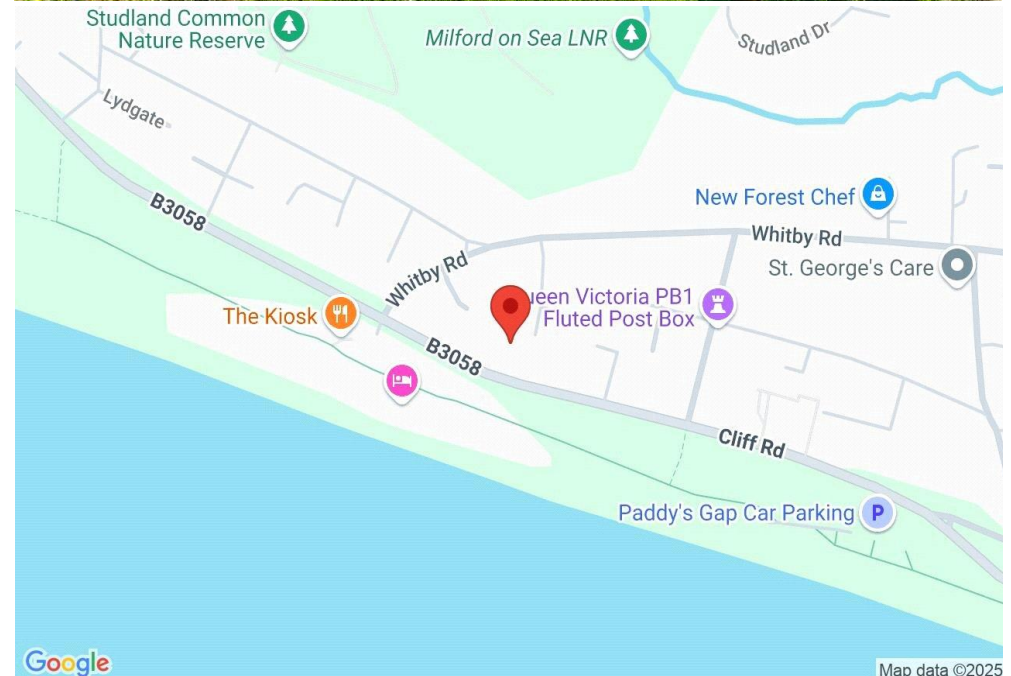
- Mains gas, electric, drainage and water
- Council Tax Band E
- Energy Performance Rating To be confirmed

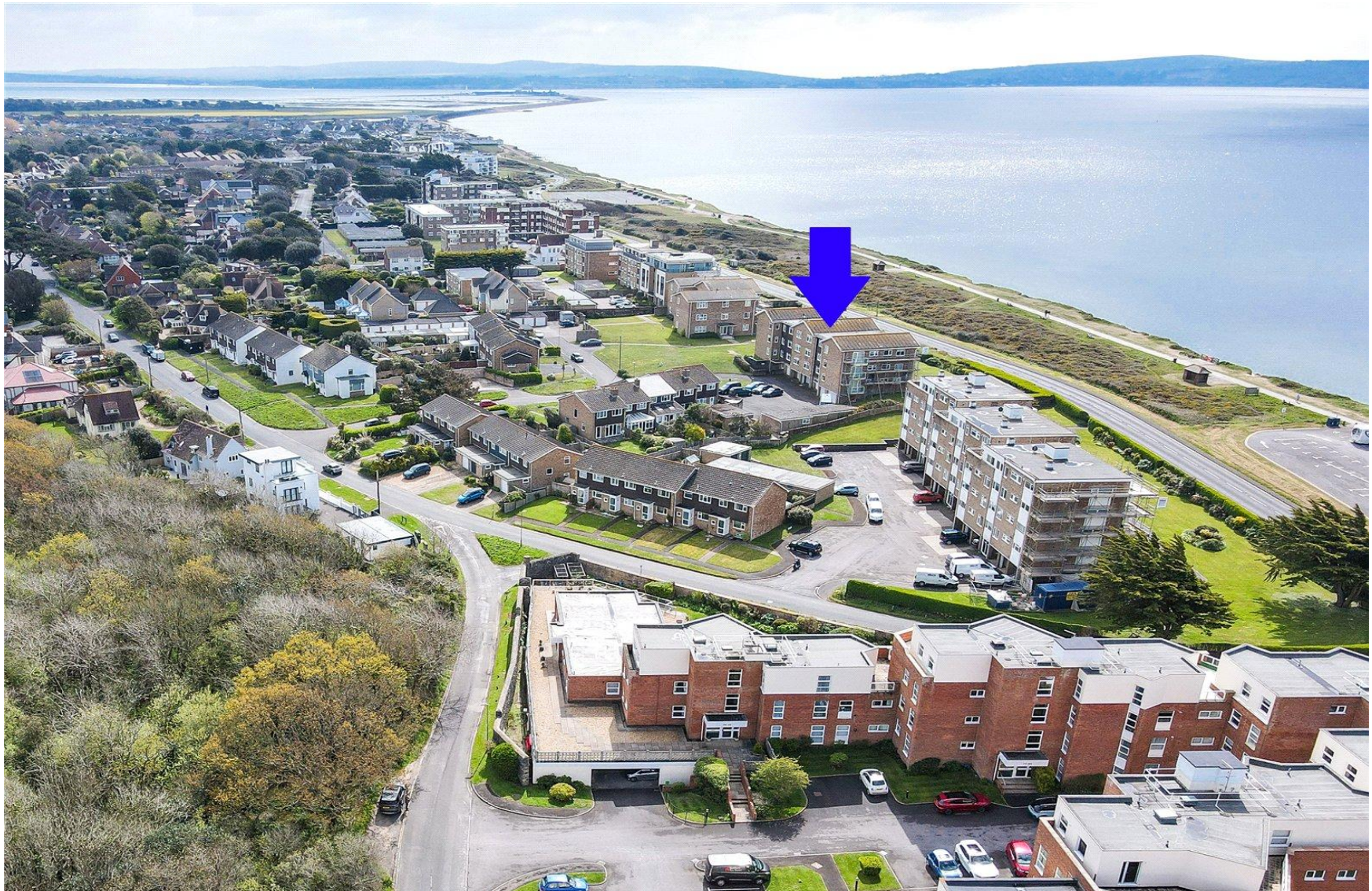
Situation

Milford on Sea is a thriving coastal village located between Barton on Sea and the Georgian market town of Lymington. It offers a range of amenities, including top-tier restaurants, three pubs, a superb tennis and squash club, and an attractive village green. With its picturesque coastal setting, lovely beaches, proximity to the New Forest National Park, and the nearby Keyhaven Sailing Club, Milford on Sea is one of the most desirable locations on the south coast.

Directions

From Mitchells, turn right at the traffic lights and proceed along Station Road. At the roundabout, continue straight ahead into Milford Road. Follow Milford Road, and upon reaching the clifftop, Maryland Court will be found a short distance along on the left hand side.





Mitchells.uk.com
info@mitchells.uk.com
01425 616411

Centenary Buildings
8-10 Old Milton Road
New Milton
Hampshire
BH25 6DT

Mitchells
1963 — TODAY

