



10 Thistle Close, Highcliffe on Sea, BH23 4UP

£615,000

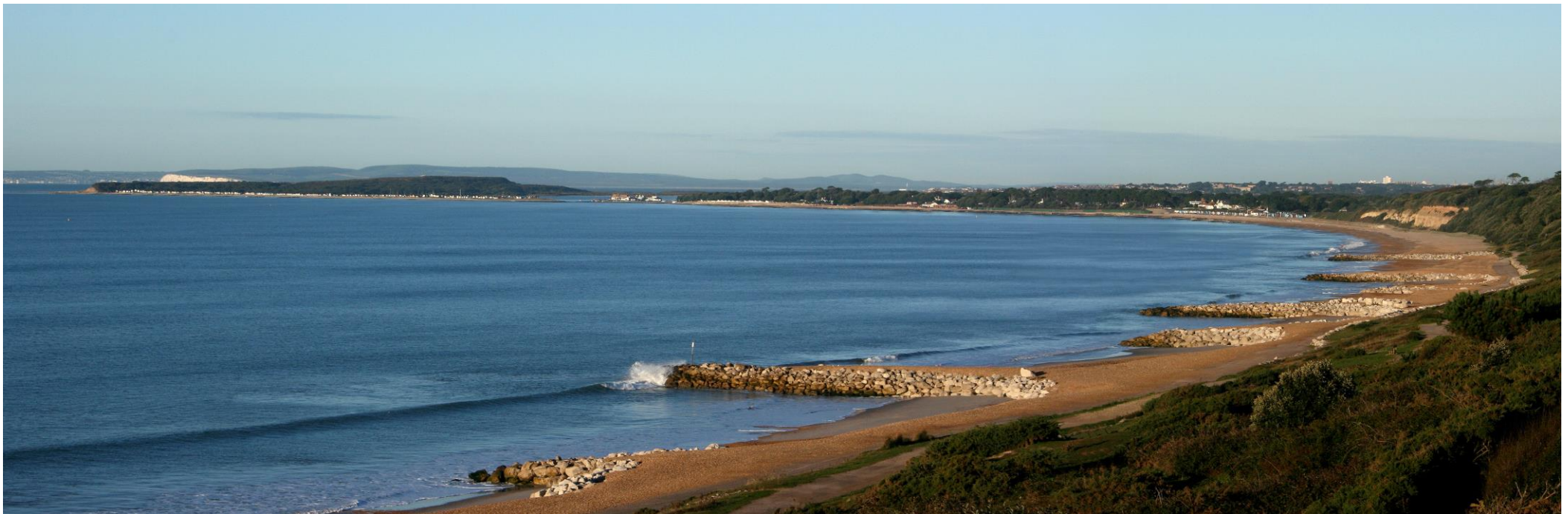
Mitchells
1963 — TODAY



Thistle Close, Highcliffe on Sea

A superb detached family house being 'Hoburne' design on this forever popular development and situated in a highly desirable part of the estate. This spacious home of approximately 1825sqft features four good size bedrooms with two bath/shower rooms and excellent ground floor living accommodation, including a sitting room and separate dining room with good size vaulted extension, both giving access onto the rear garden, a fully fitted kitchen with some integrated appliances. The garden is a particular feature backing onto permanent open space and there is an attached double garage and private off road parking for four or more cars. Located on the Hoburne Farm Development, within the Highcliffe schools catchment area and within easy reach of the local shops at Sauflands and the sandy beaches at Friars Cliff. Viewing strongly recommended.

- FOUR BEDROOMS • TWO BATH/SHOWER ROOMS (ONE EN-SUITE) • KITCHEN • UTILITY ROOM • LOUNGE • DINING ROOM
- GARDEN ROOM • GROUND FLOOR WC • DOUBLE GARAGE • GARDENS • OFF-ROAD PARKING •



The Property

- Spacious detached family house
- Four bedrooms with some fitted wardrobes
- Two fully fitted bath/shower rooms (one en-suite)
- Well fitted kitchen with built-in appliances
- Light and airy dual aspect sitting room with double doors onto the rear garden
- Formal dining room with outlook over the rear
- Spacious 'vaulted' garden room extension
- Utility room & ground floor cloakroom
- Neat and easily maintained rear garden
- Double garage & off-road parking
- Situated in this quiet cul-de-sac location within walking distance of local amenities and the sandy beaches at Friars Cliff
- Highcliffe School catchment area
- Council Tax 'E' £2796.19
- EPC 'C'

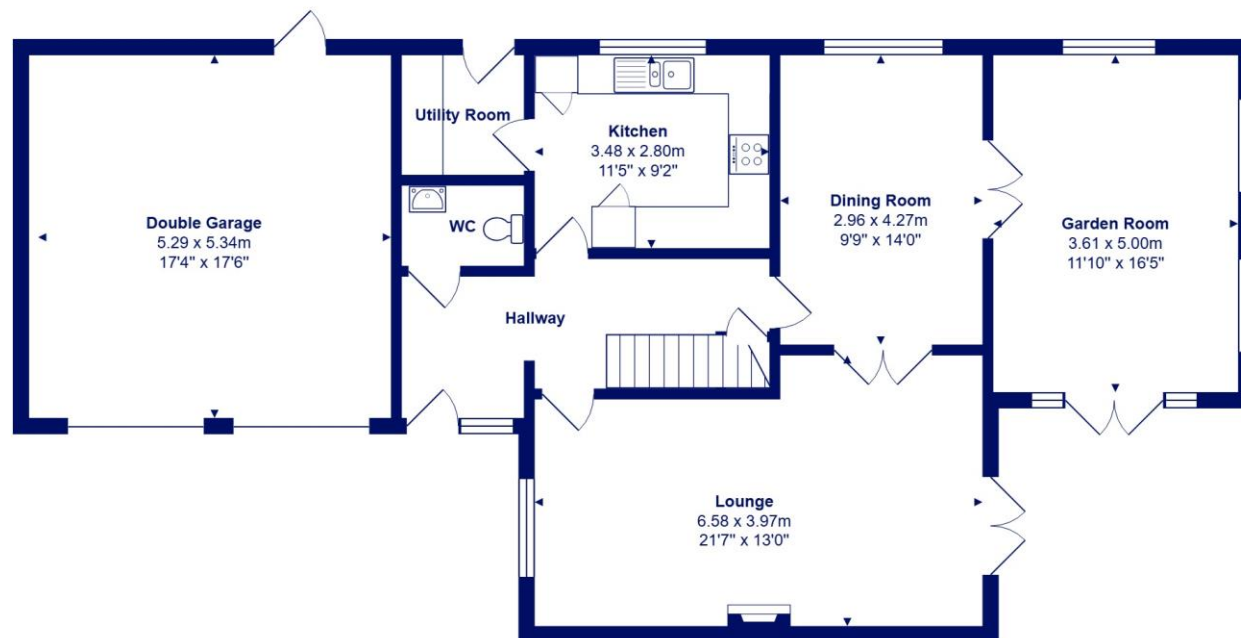




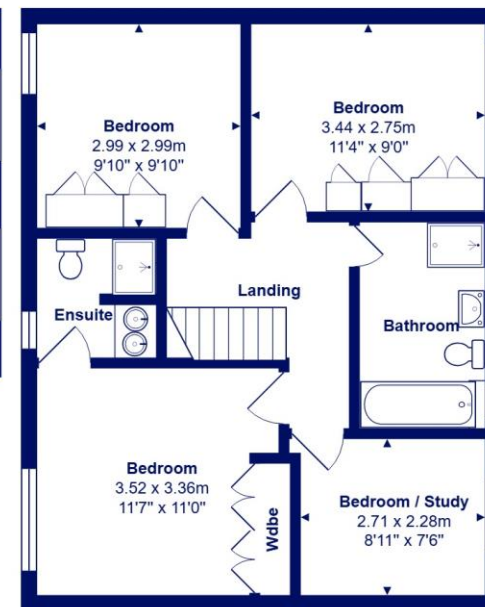
Location

Highcliffe is a small village in the borough of Christchurch, Dorset. The village lies on a picturesque stretch of Solent coastline with views over Christchurch Bay to the Isle of Wight. Fuelled by its enviable location, coastal walks, main line railway links to London (in under two hours) excellent schools and the popularity of the Chewton Glen Hotel, the Highcliffe Golf Course and the Nature Reserve at Steamer Point, Highcliffe is a popular area for those relocating to the coast.





Ground Floor



First Floor



Total Area: 169.4 m² ... 1824 ft²
 All measurements are approximate and for display purposes only







mitchells.uk.com
highcliffe@mitchells.uk.com
01425 272206

Highcliffe on Sea
284 Lymington Road
Highcliffe on Sea
BH23 4TH

