



STONY LANE, BURTON BH23 7LD

Mitchells
1963 — TODAY

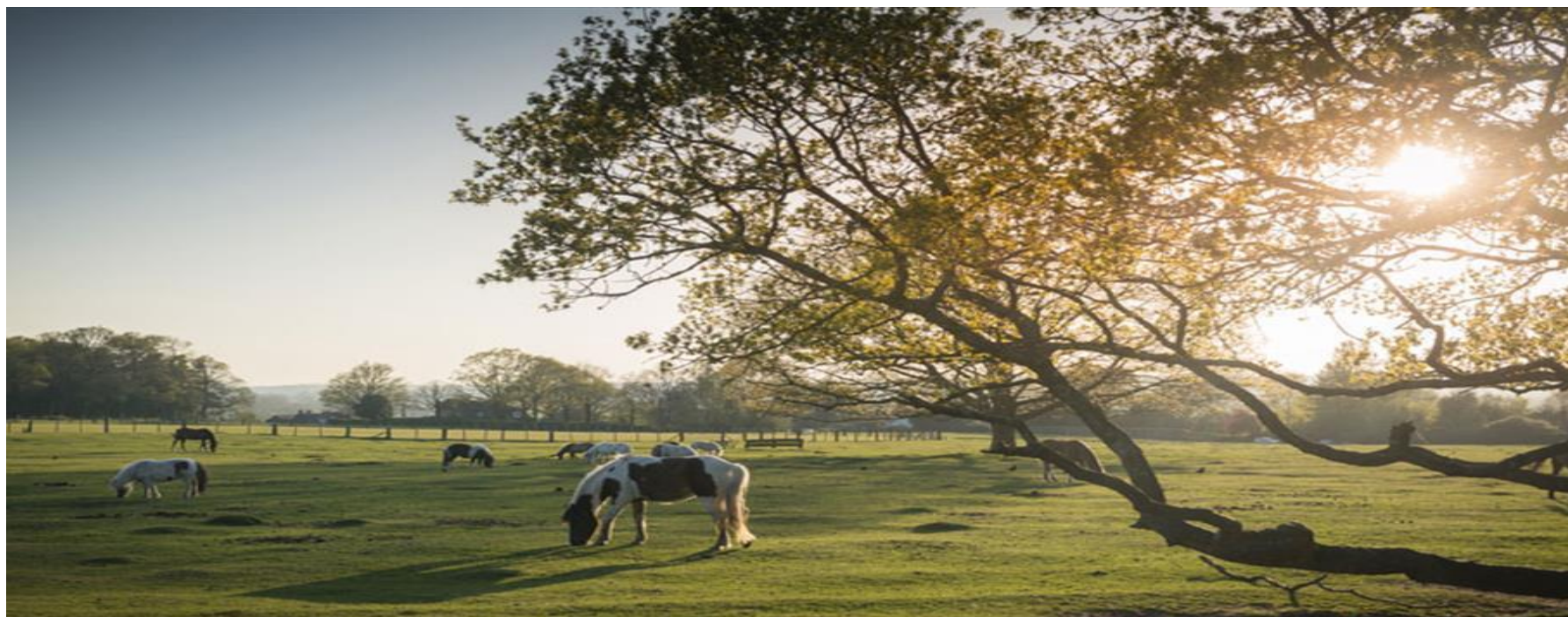


**** VACANT POSSESSION **** A spacious detached chalet bungalow of nearly 1800 sq. ft featuring generous room sizes, light and airy living accommodation and benefitting from a private, sunny rear garden, off road parking for multiple vehicles and a single integral garage with electric roller door. This lovely home features versatile accommodation comprising of four/five bedrooms, two bath/shower rooms and a fabulous open plan kitchen/dining/living room leading onto a conservatory extension. Located in the village of Burton, offering close proximity to the New Forest National Park and the coastal town of Christchurch.

FOUR/FIVE BEDROOMS • TWO BATH/SHOWER ROOMS (one ensuite) • KITCHEN

LOUNGE/DINER• CONSERVATORY • GARDEN

GARAGE • OFF ROAD PARKING FOR MULTIPLE VEHICLES



The Property

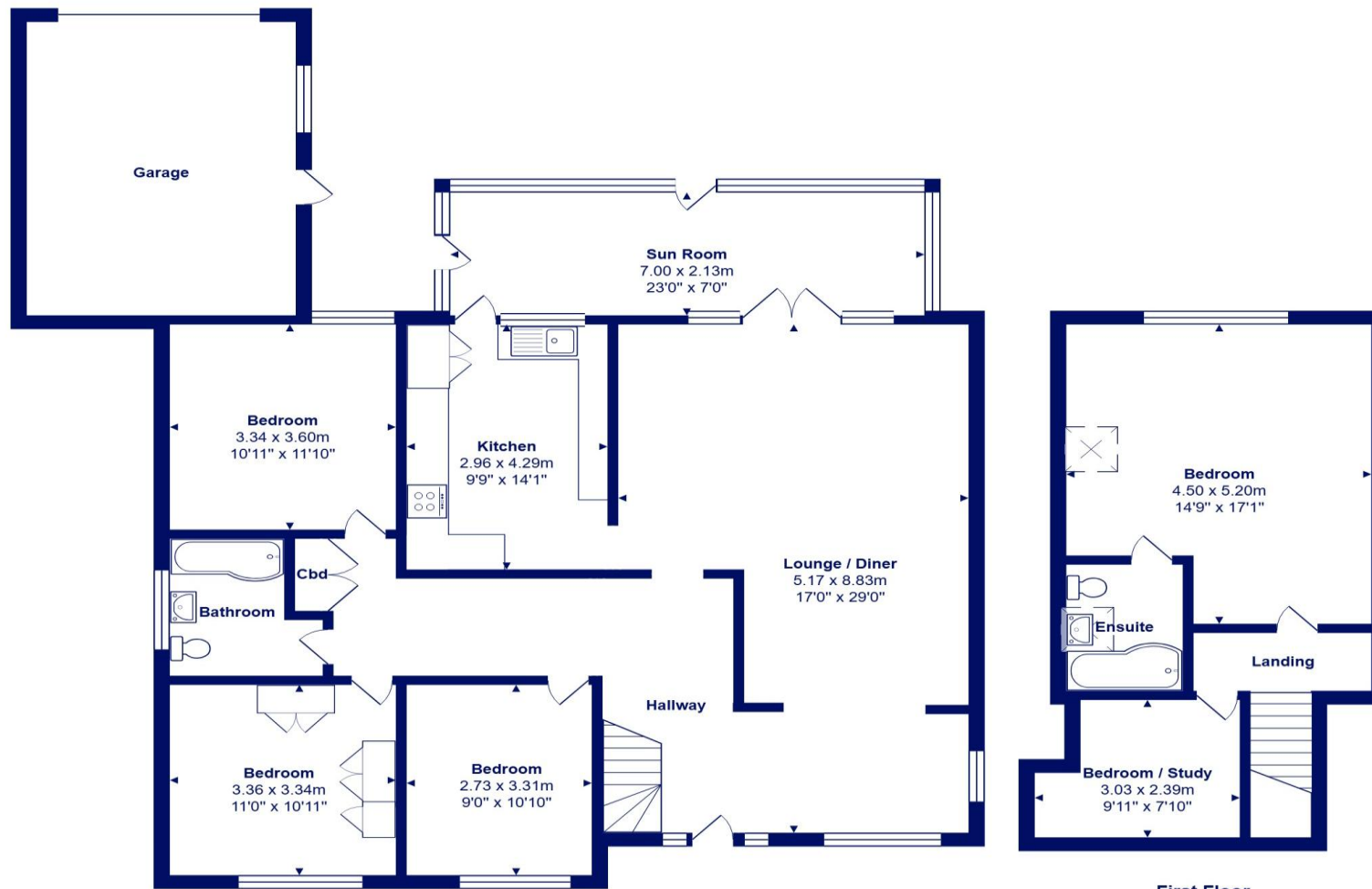
- Spacious detached bungalow of nearly 1800 sq ft
- Four/Five bedrooms
- Two brand new bath/shower rooms
- Refitted modern kitchen with some Integrated appliances
- Open plan living accommodation
- Conservatory extension
- Sunny, private rear garden
- Gated driveway and rear access to a large garage
- Council Tax Band 'E' £2,777.61
- EPC rating 'D'





Location

Christchurch is a beautiful, vibrant and historic town with its 11th century priory, quay/harbour, ancient castle ruins and various shops, cafes, restaurants and bars. The Town is well served for transport links with a main line railway station to London/Waterloo being just under 2 hours and Bournemouth International Airport about 5 miles distant. Excellent infant, junior and senior schools are also within easy reach as is the stunning the New Forest National Park.



Ground Floor

First Floor



Total Area: 162.9 m² ... 1753 ft² (excluding garage)

All measurements are approximate and for display purposes only







mitchells.uk.com
mudeford@mitchells.uk.com
01202 499295

Mudeford
Cambridge House
112-114 Stanpit
BH23 3ND

