



6 Friars Cliff, Friars Cliff, BH23 4EA

£1,650,000

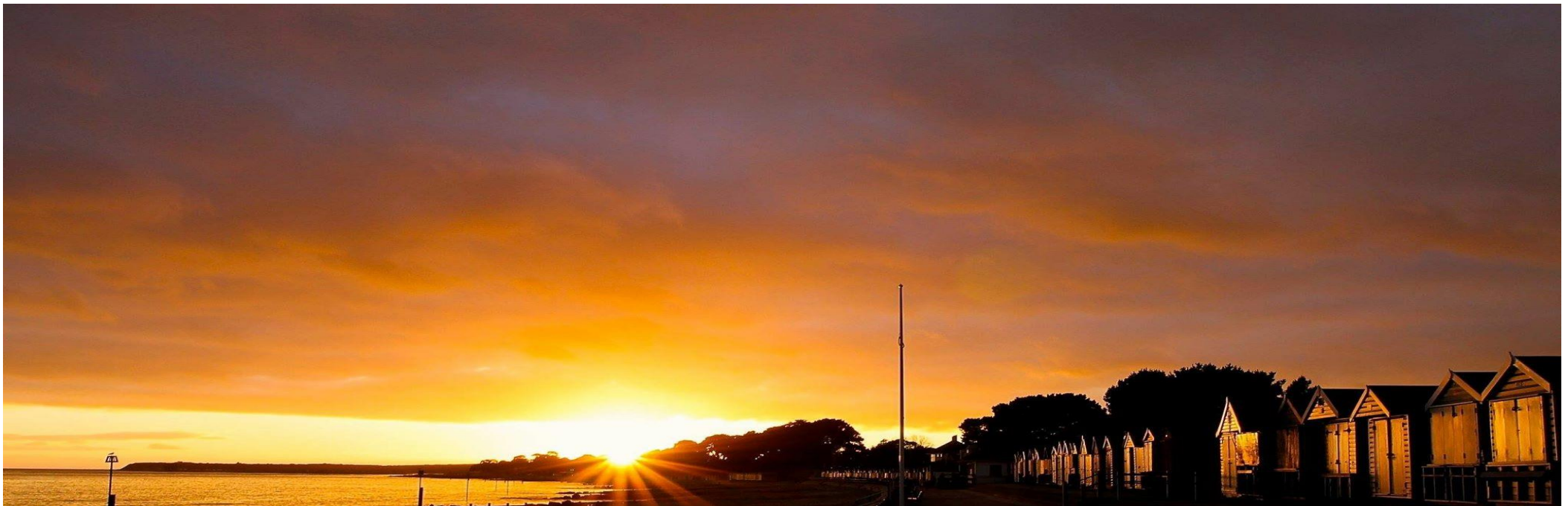
Mitchells
1963 — TODAY



Friars Road, Friars Cliff

A commanding 'New England style' 'beach house' approaching 3000 sqft, situated on one of Friars Cliff's best roads with the stunning blue flag beach just moments away. No expense has been spared on the comprehensive refurbishment of this outstanding home with the house boasting incredibly bright living space with the finest fittings and a glorious large garden to the rear. First impressions here are spot on. The house features imposing elevations to the front and upon walking into the full height vaulted reception hall, you know this house is special. Flooded with natural light and with a view from the front all the way through to the bottom of the garden, this house is seriously impressive. The split-level living space to the rear seamlessly links the inside to the rear garden and with four en-suite bedrooms, this stylish home can easily accommodate a large family. If you like entertaining, the house also boasts a stunning bar/games room with extensive outside terracing and BBQ area. For people looking for luxury space and a coastal lifestyle, this house is hard to beat. Strongly recommended.

- FOUR BEDROOMS • FOUR BATH/SHOWER ROOMS (ALL EN-SUITE) • KITCHEN/DINING/DAY ROOM • DINING AREA • UTILITY ROOM • GROUND FLOOR WC • LARGE HALLWAY • STUDY AREA • LIBRARY • GAMES ROOM • OUTDOOR KITCHEN • GARDENS • OFF-ROAD PARKING •



The Property

- Exceptional coastal home in true show home order, immaculate in every respect
- Beautifully proportioned rooms with high ceilings and large New England style sash windows
- Master bedroom suite with bespoke wardrobes, luxury en-suite and balcony, three further en-suite bedrooms (one ground floor)
- Wonderful open plan kitchen/dining/living space, split level and with a large roof lantern and access onto the gardens
- Study and adjacent library, superb internal pub/bar/games room- the perfect entertainment space!
- Plenty of parking, detached double length garage (suitable for conversion if required) and a fabulous large rear garden
- Porcelain terracing and pathways, covered pergola and hand crafted Purbeck stone outdoor BBQ
- A fantastic house with one of the largest plots on the market in Friars Cliff currently
- Council Tax 'F £3304.60
- EPC 'C'

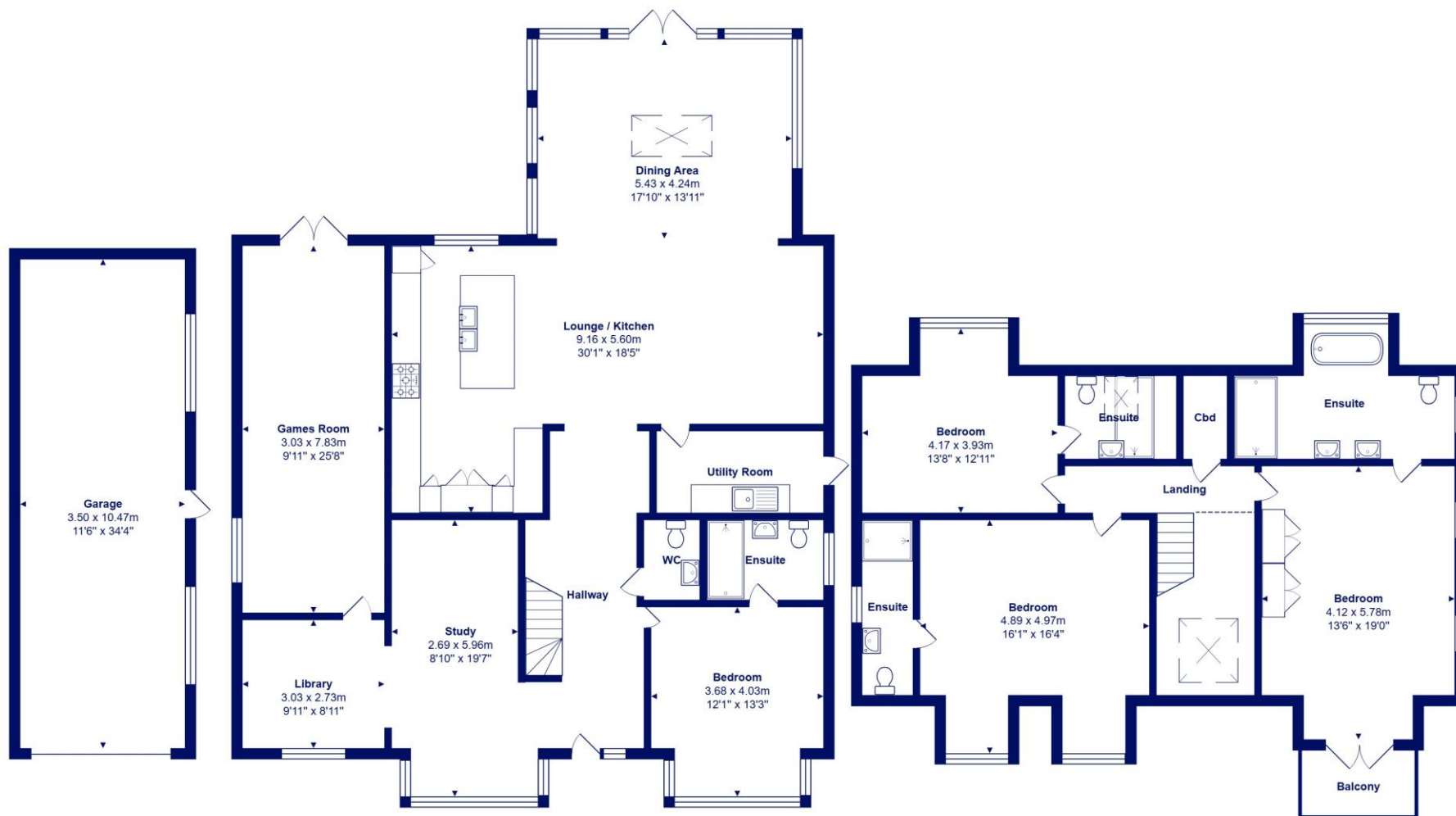




Location

Friars Cliff has long been one of the most sought after residential locations of choice for people looking to move to a seaside location within East Dorset, with its sandy award winning beaches, cafes and famous beach huts. Friars Cliff affords views over Christchurch Bay to the Needles on the Isle of Wight to the south and towards Hengistbury Head and Christchurch Harbour to the west. Perfect for families and retirement living, with the historic Priory town of Christchurch within two miles distant and with access to London in under two hours from the mainline station at Hinton Admiral.





Ground Floor

First Floor



Total Area: 258.1 m² ... 2778 ft² (excluding balcony, garage)
All measurements are approximate and for display purposes only







mitchells.uk.com
highcliffe@mitchells.uk.com
01425 272206

Highcliffe on Sea
284 Lymington Road
Highcliffe on Sea
BH23 4TH

