



THE MEADWAY, HIGHCLIFFE ON SEA, DORSET

Mitchells
1963 — TODAY



An exceptional detached bungalow that has undergone a complete transformation and now presented in superb condition throughout offering three bedrooms and two bathrooms. This stylish home now features 1130 sq ft of luxuriously appointed living space set off by impressive vaulted kitchen, dining, living space which also provides access to the landscaped rear gardens. Also features some very smart, bespoke internal features. No forward chain.

THREE BEDROOMS • TWO BATH/SHOWER ROOMS (ONE EN-SUITE)

KITCHEN/DINING/LIVING AREA • UTILITY ROOM

GARDEN

OFF ROAD PARKING



The Property

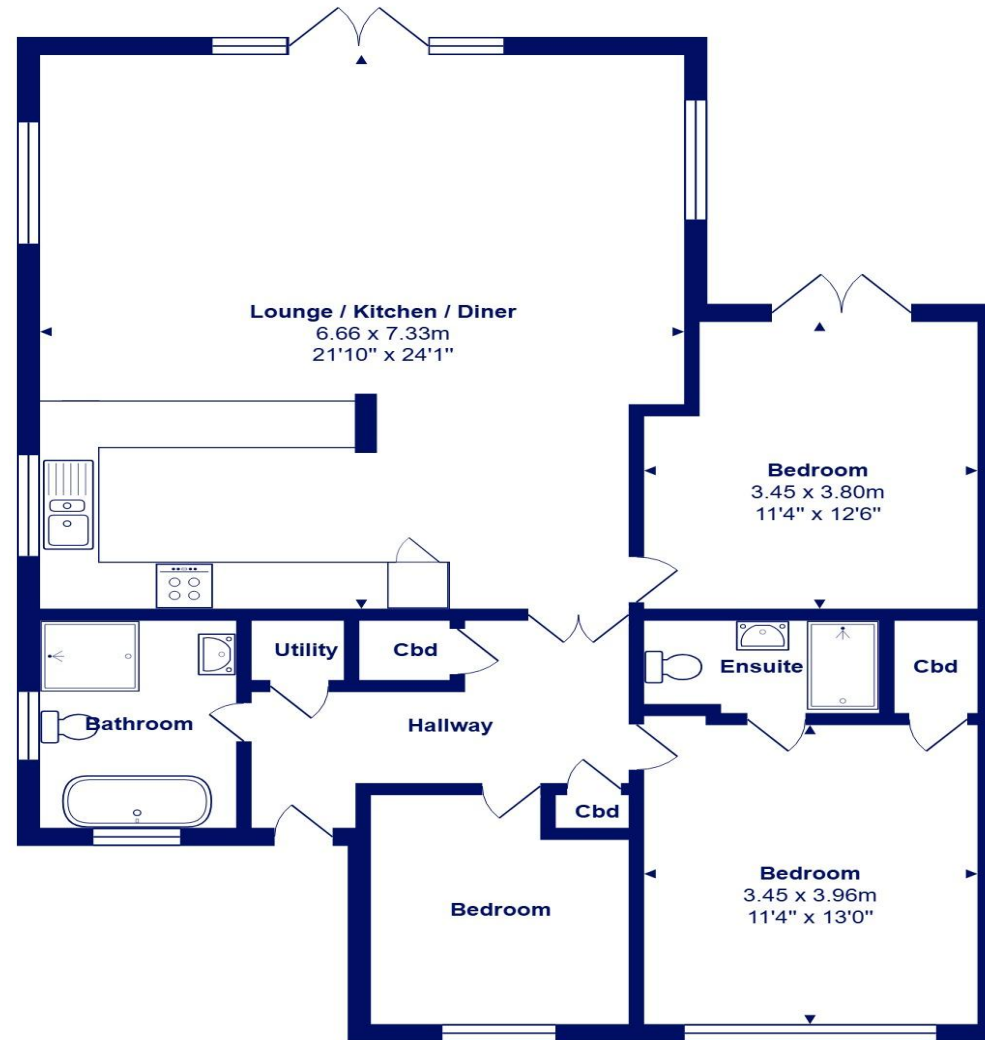
- Beautifully presented throughout
- Three bedrooms (master with en-suite)
- Beautiful vaulted kitchen/dining/living space some integrated appliances and access to the garden
- A good size fully tiled family bathroom with separate walk-in shower
- Gas fired central heating, uPVC double glazing and neutral floor coverings
- Large and private garden two separate patio areas for entertaining
- Hard landscaping front garden creating plenty of off road parking
- Quiet and pleasant residential area
- Just over a mile to the north of the High street and walking distance to Hinton Admiral Railway station
- Council Tax Band 'C' - £2033.59
- EPC rating 'C'
- Bullet point





Location

Highcliffe is a small village in the borough of Christchurch, Dorset. The village lies on a picturesque stretch of Solent coastline with views over Christchurch Bay to the Isle of Wight. Fuelled by its enviable location, coastal walks, main line railway links to London (in under two hours) excellent schools and the popularity of the Chewton Glen Hotel, the Highcliffe Golf Course and the Nature Reserve at Steamer Point, Highcliffe is a popular area for those relocating to the coast



Total Area: 104.8 m² ... 1128 ft²
 All measurements are approximate and for display purposes only







mitchells.uk.com
highcliffe@mitchells.uk.com
01425 272206

Highcliffe
284 Lymington Road
Highcliffe
BH23 5ET

