



“Glenville Cottage” 6 Glenville Road, Walkford, BH23 5PY £485,000

Mitchells
1963 — TODAY



Glenville Road, Walkford

A truly charming and beautifully presented late Victorian detached cottage with later additions, now offering about 1120sqft of accommodation. Boasting period features, an easily maintained rear garden, garage and an off- road parking space. Close to local shops and amenities. Now being sold with no forward chain.

- THREE BEDROOMS • TWO BATH/SHOWER ROOMS (ONE EN-SUITE) • KITCHEN • UTILITY ROOM • LOUNGE • DINING ROOM • GF WC • GARAGE • PARKING SPACE



The Property

- Beautifully presented throughout
- Three bedrooms
- Fabulous master bedroom with extensive fitted furniture & en-suite shower/cloakroom
- Delightful family bathroom
- Well fitted kitchen with Belling Range cooker (2 ovens & separate grill)
- Lovely large dual aspect sitting room with feature fireplace (blocked)
- Separate dining room again with similar fireplace
- Utility room & ground floor cloakroom
- Karndean flooring throughout the ground floor
- New gas fired boiler in 2020
- Single garage and off-road parking
- Short walk to the local shops at Walkford and close to farmland and fields of Hinton
- Highcliffe School catchment
- Council Tax 'D' £2287.80
- EPC 'C'

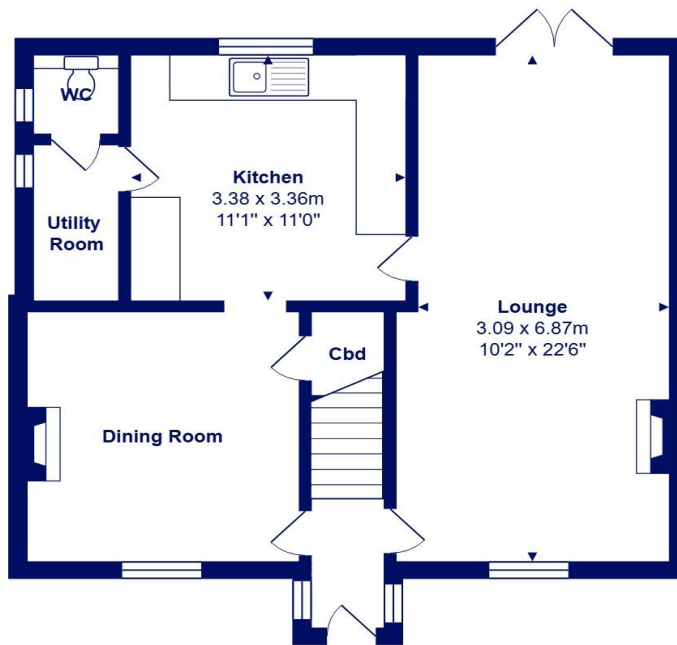
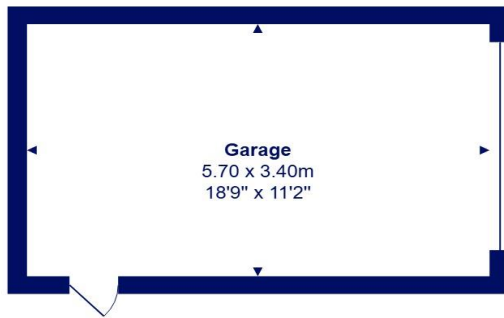




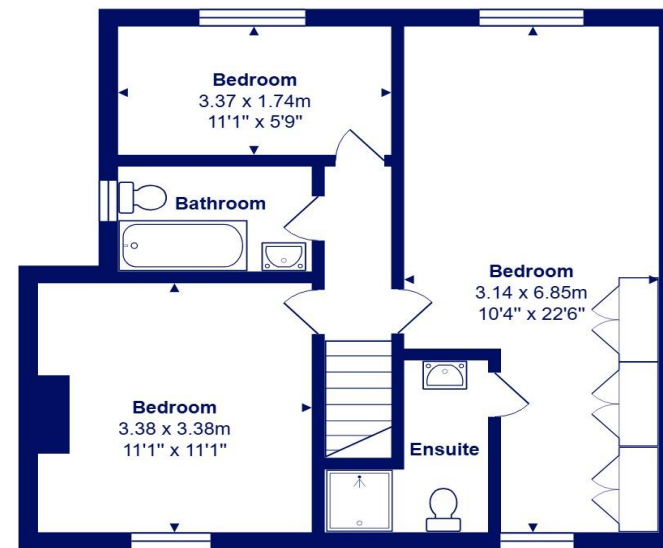
Location

Highcliffe is a small village in the borough of Christchurch, Dorset. The village lies on a picturesque stretch of Solent coastline with views over Christchurch Bay to the Isle of Wight. Fuelled by its enviable location, coastal walks, main line railway links to London (in under two hours) excellent schools and the popularity of the Chewton Glen Hotel, the Highcliffe Golf Course and the Nature Reserve at Steamer Point, Highcliffe is a popular area for those relocating to the coast.





Ground Floor



First Floor



Total Area: 104.0 m² ... 1119 ft² (excluding garage)

All measurements are approximate and for display purposes only







mitchells.uk.com
highcliffe@mitchells.uk.com
01425 272206

Highcliffe on Sea
284 Lymington Road
Highcliffe on Sea
BH23 4TH

