



16 Glengarry Way, Friars Cliff, BH23 4EH

£1,150,000

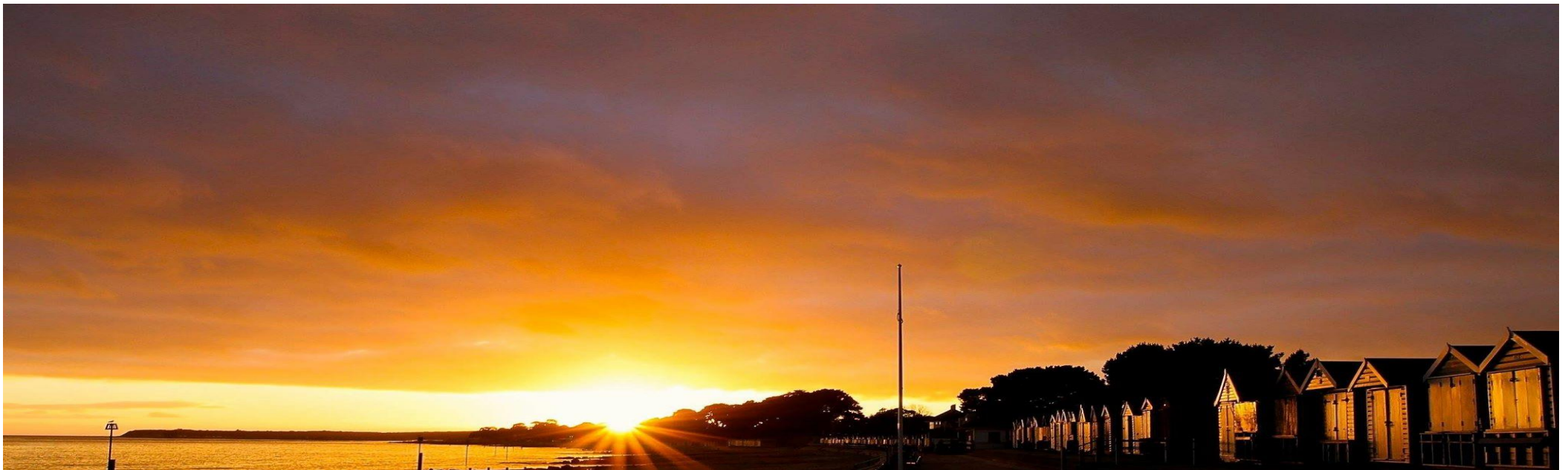
Mitchells
1963 — TODAY



Glengarry Way, Friars Cliff

A stunning example of one of these fine executive style homes, originally built by Prowtings in the mid 1980s but now having been restyled, remodelled and extended; situated right by the beach with a nearby footpath giving easy access, in this truly premier area. This beautiful property showcases a crisp modern interior with amazing ground floor living space and an easily maintained, sunny rear garden. Viewing highly advised to fully appreciate the quality of this property.

- FOUR BEDROOMS • THREE BATH/SHOWER ROOMS (ONE EN-SUITE) • KITCHEN/DINING ROOM • UTILITY ROOM • LOUNGE • DOUBLE GARAGE • GARDENS • OFF-ROAD PARKING



The Property

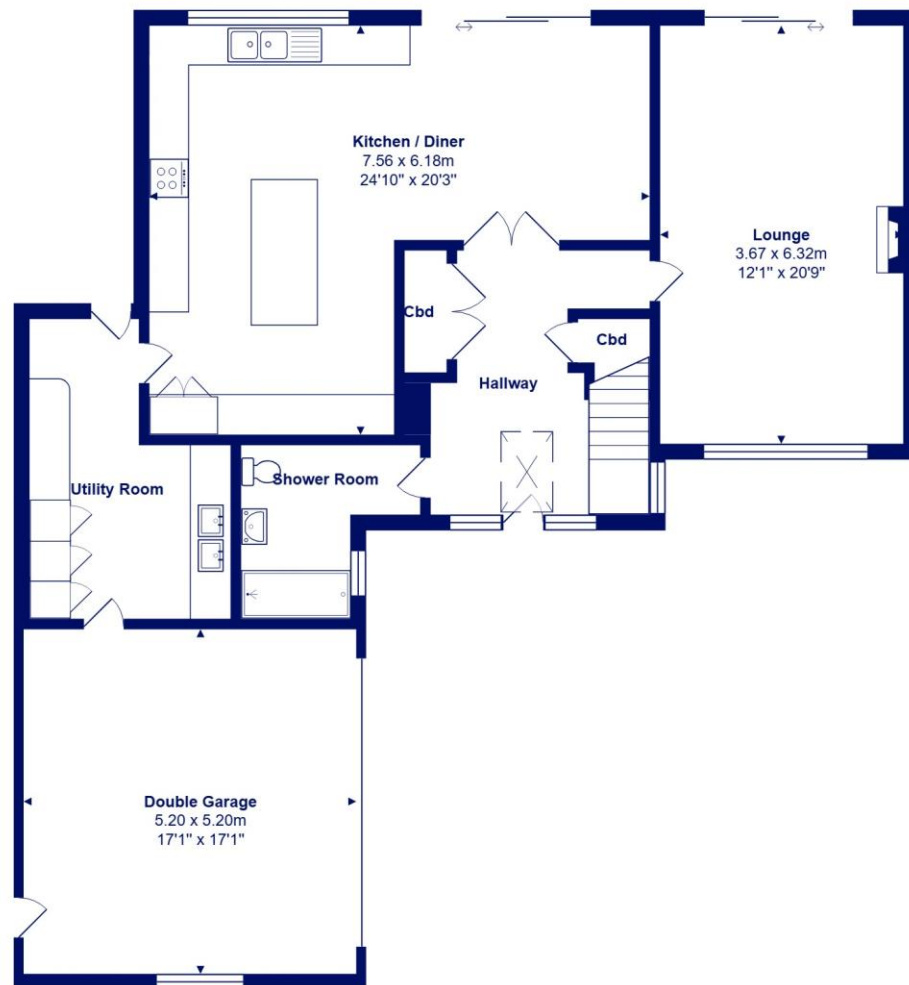
- Four good size bedrooms
- Three bath/shower rooms (one en-suite & one ground floor)
- Built in wardrobes to most bedrooms
- Fabulous bespoke kitchen fitments with multiple appliances
- Impressive light and airy reception hall
- A wonderful large kitchen/dining room opening onto the gardens
- An impressive utility room, larger than a lot of kitchens!
- Double aspect sitting room with a log burner
- Double garage with an electric roll up door and useful roof storage
- Underfloor heating in hall and kitchen/diner
- A well established and easily maintained rear garden
- Off road parking for several cars EV charging point in the garage
- Short stroll to the beautiful beaches at Friars Cliff
- An energy efficient home
- EPC C
- Council Tax 'G' £3813.00





Location

Friars Cliff has long been one of the most sought after residential locations of choice for people looking to move to a seaside location within East Dorset, with its sandy award winning beaches, cafes and famous beach huts. Friars Cliff affords views over Christchurch Bay to the Needles on the Isle of Wight to the south and towards Hengistbury Head and Christchurch Harbour to the west. Perfect for families and retirement living, with the historic Priory town of Christchurch within two miles distant and with access to London in under two hours from the mainline station at Hinton Admiral.



Ground Floor



First Floor



Total Area: 159.3 m² ... 1715 ft² (excluding double garage)

All measurements are approximate and for display purposes only







mitchells.uk.com
highcliffe@mitchells.uk.com
01425 272206

Highcliffe on Sea
284 Lymington Road
Highcliffe on Sea
BH23 4TH

