



*2 Thursby Road, Highcliffe on Sea, BH23 5PD*

*£699,950*

**Mitchells**  
1963 — TODAY







# *Thursby Road, Highcliffe on Sea*

A spacious and modernised detached chalet bungalow approaching 2,000sqft offering flexible living accommodation over two floors. A particular feature is the four bath/shower rooms to accompany the four bedrooms. Further accommodation includes a good size kitchen/diner, separate snug and a ground floor office/bedroom 5. The property stands on a large, private west facing plot with ample off-road parking to the front and a single garage.

- FOUR BEDROOMS • FOUR BATH/SHOWER ROOMS (FOUR EN-SUITE) • KITCHEN/DINER • SNUG • OFFICE/BEDROOM 5 • GF WC • GARDENS • GARDEN ROOM/OFFICE • OFF-ROAD PARKING • SINGLE GARAGE •



## The Property

- Well presented throughout
- Four bedrooms most with fitted cupboards/storage (two ground floor)
- Four luxury bath/shower rooms (four en-suite)
- A good size contemporary kitchen/diner with integrated appliances, island seating for 4 and access onto the rear garden
- Separate snug
- Office/potential bedroom 5
- Ground floor wc
- Upvc double glazing & Gas fired central heating
- A lovely private West facing rear garden with a large area of decking and patio ideal for entertaining and a useful outbuilding providing an office/garden room if required
- Large frontage with ample off-road parking
- Single garage
- Short stroll to the main high street shopping centre with the cliff top and beach being a little further on
- Excellent location on this quiet road within the Highcliffe Schools catchment area
- EPC 'C'
- Council Tax 'E' £2796.19



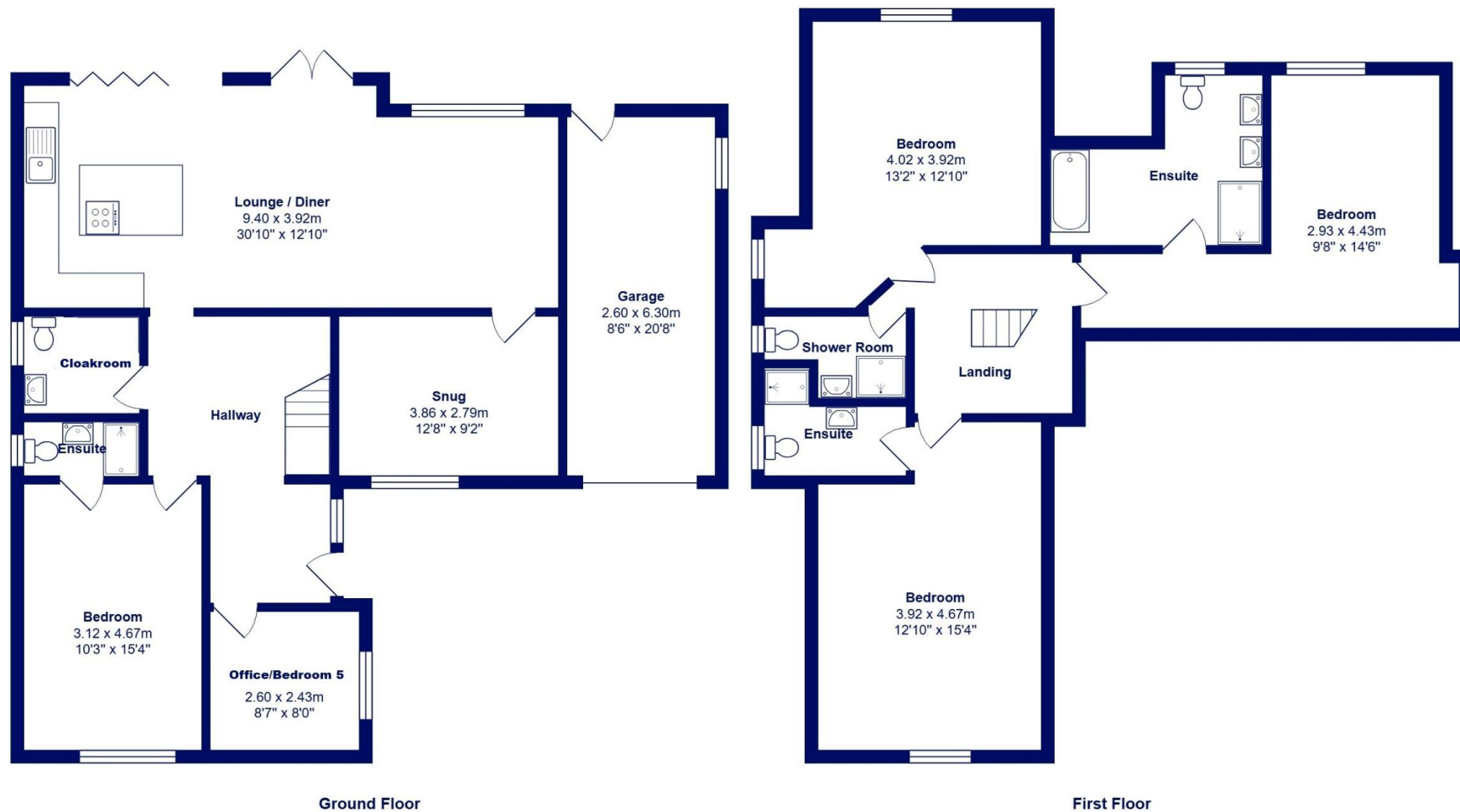




## Location

Highcliffe is a small village in the borough of Christchurch, Dorset. The village lies on a picturesque stretch of Solent coastline with views over Christchurch Bay to the Isle of Wight. Fuelled by its enviable location, coastal walks, main line railway links to London (in under two hours) excellent schools and the popularity of the Chewton Glen Hotel, the Highcliffe Golf Course and the Nature Reserve at Steamer Point, Highcliffe is a popular area for those relocating to the coast.





All measurements are approximate and for display purposes only









[mitchells.uk.com](http://mitchells.uk.com)  
[highcliffe@mitchells.uk.com](mailto:highcliffe@mitchells.uk.com)  
01425 272206

Highcliffe  
284 Lymington Road  
Highcliffe on Sea  
BH23 5ET

