



3 Lysander Close, Mudeford, BH23 4ST

£499,950

Mitchells
1963 — TODAY



Lysander Close, Mundeford

A fantastic three bedroom semi-detached family home that has been extended by the current vendors, featuring three good sized bedrooms, vaulted kitchen/family room with Velux windows flooding the room with light, separate large sitting room, ground floor wc and a good size west facing garden. Situated on the extremely popular Princess Park development in Mundeford on the fringes of Friars Cliff within a short level stroll to the sandy Avon Beach with an array of cafes and eateries. Vendors suited.

- THREE BEDROOMS • FAMILY BATHROOM • KITCHEN/DINING ROOM • SITTING ROOM • GF WC
- GARDEN • OFF-ROAD PARKING •



The Property

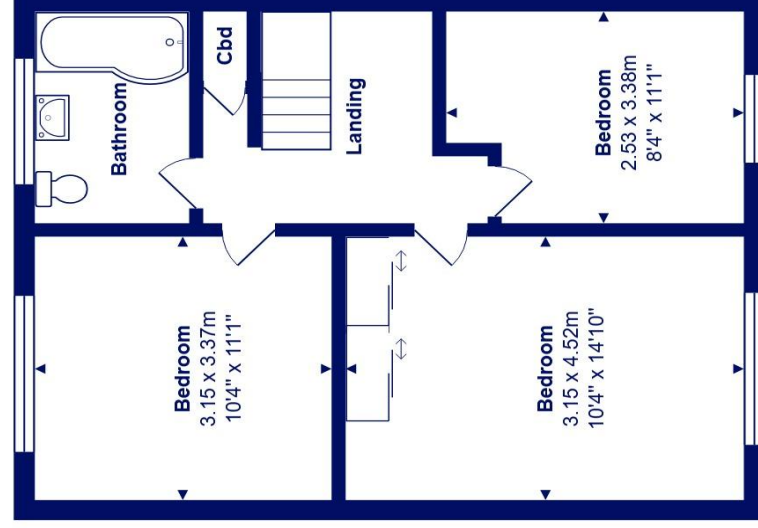
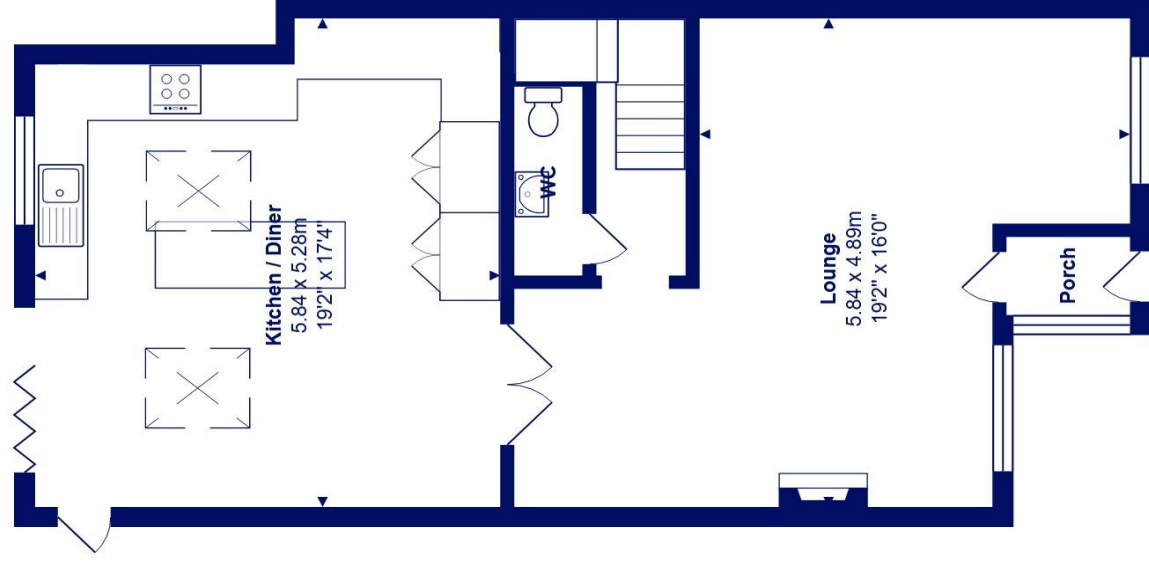
- Three good sized bedrooms, master with fitted wardrobes
- Fully tiled re-fitted family bathroom
- Beautiful large vaulted rear extension creating an impressive kitchen/dining room with island breakfast bar, some integrated appliances and quality Quartz worktops
- Large sitting room with space for dining if required
- Ground floor wc & entrance porch
- Gas fired central heating and Upvc double glazed windows
- Off-road parking for two cars
- Large west facing garden with area of patio ideal for entertaining, garden shed
- Situated in this superb location just a short stroll to the local sandy Blue Flag beaches at Steamer Point and Avon
- Highcliffe school catchment
- EPC 'C'
- Council Tax 'D' £2287.80





Location

Mudeford began as a small fishing village close to the entrance of Christchurch Harbour which still sees fishing boats landing their catch today. The area enjoys award winning sandy beaches at Avon beach and plenty of wildlife activity on Hengistbury Head and Stanpit Marsh Nature Reserve. The popular Mudeford Sandbank attracts visitors every year to the private beach huts with the Harbour providing a sheltered environment for watersports activities. With a friendly, community feel, it is no wonder Mudeford is becoming a popular choice for relocation.



Ground Floor

First Floor



Total Area: 114.4 m² ... 1231 ft²

All measurements are approximate and for display purposes only







mitchells.uk.com
highcliffe@mitchells.uk.com
01425 272206

Highcliffe
284 Lymington Road
Highcliffe on Sea
BH23 5ET

