



DISRAELI ROAD, STANPIT, DORSET

Mitchells
1963 — TODAY



An outstanding Georgian style townhouse on this highly acclaimed development that has been completely modernised throughout providing light, bright accommodation with spacious room sizes that total nearly 1200 sq. ft. This lovely property benefits from features including a fantastic open plan kitchen/diner, private rear garden overlooking the nature reserve and a garage in a nearby block.

The Riverslea development is extremely well situated, just a short stroll away from Stanpit Marsh and the historic centre of Christchurch along with Avon Beach and Mudeford Quay.

FOUR BEDROOMS • TWO BATH/SHOWER ROOMS (One en-suite)

KITCHEN/DINER • SEPARATE LOUNGE

DOWNSTAIRS W/C • UTILITY ROOM

GARDEN OVERLOOKING NATURE RESERVE • GARAGE



The Property

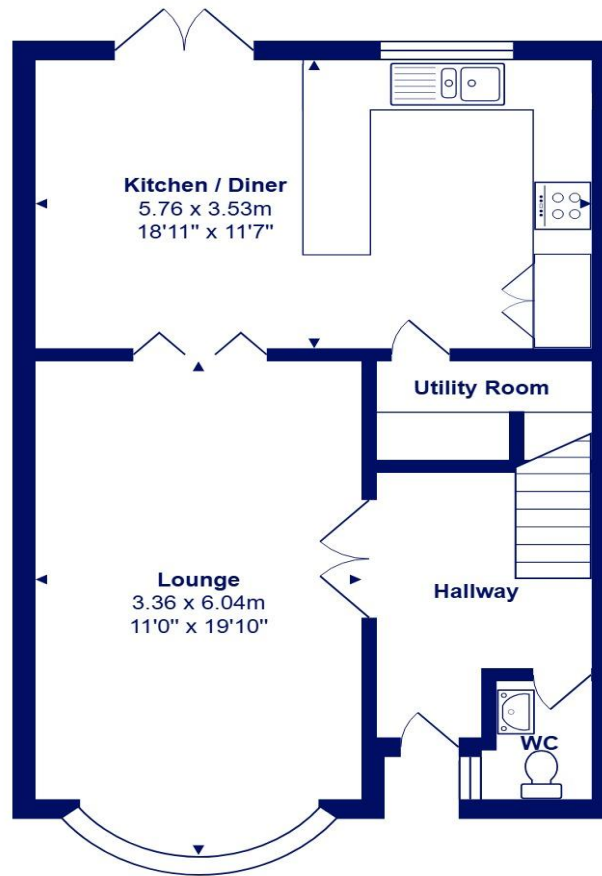
- Georgian style townhouse of approximately 1141 sq. ft
- Four first floor bedrooms all featuring built in wardrobes
- Family bathroom, ensuite shower room and separate downstairs w/c
- Spacious lounge with feature bay window
- Fantastic kitchen/dining room with access onto the garden
- Separate utility room and large entrance hallway
- Private rear garden overlooking the nature reserve
- Garage in a nearby block
- Enviably located in a popular development a stone's throw from Stanpit Marsh
- Council Tax Band 'E' - £2,844.46
- EPC rating 'C'



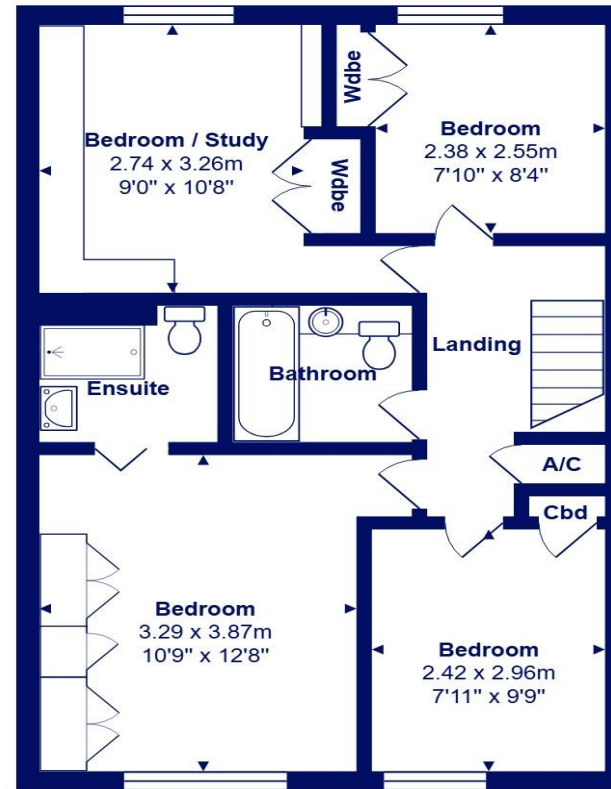


Location

Mudford began as a small fishing village close to the entrance of Christchurch Harbour which still sees fishing boats landing their catch today. The area enjoys award winning sandy beaches at Avon beach and plenty of wildlife activity on Hengistbury Head and Stanpit Marsh Nature Reserve. The popular Mudford Sandbank attracts visitors every year to the private beach huts with the Harbour providing a sheltered environment for water sports activities. With a friendly, community feel, it is no wonder Mudford is a popular choice for relocation.



Ground Floor



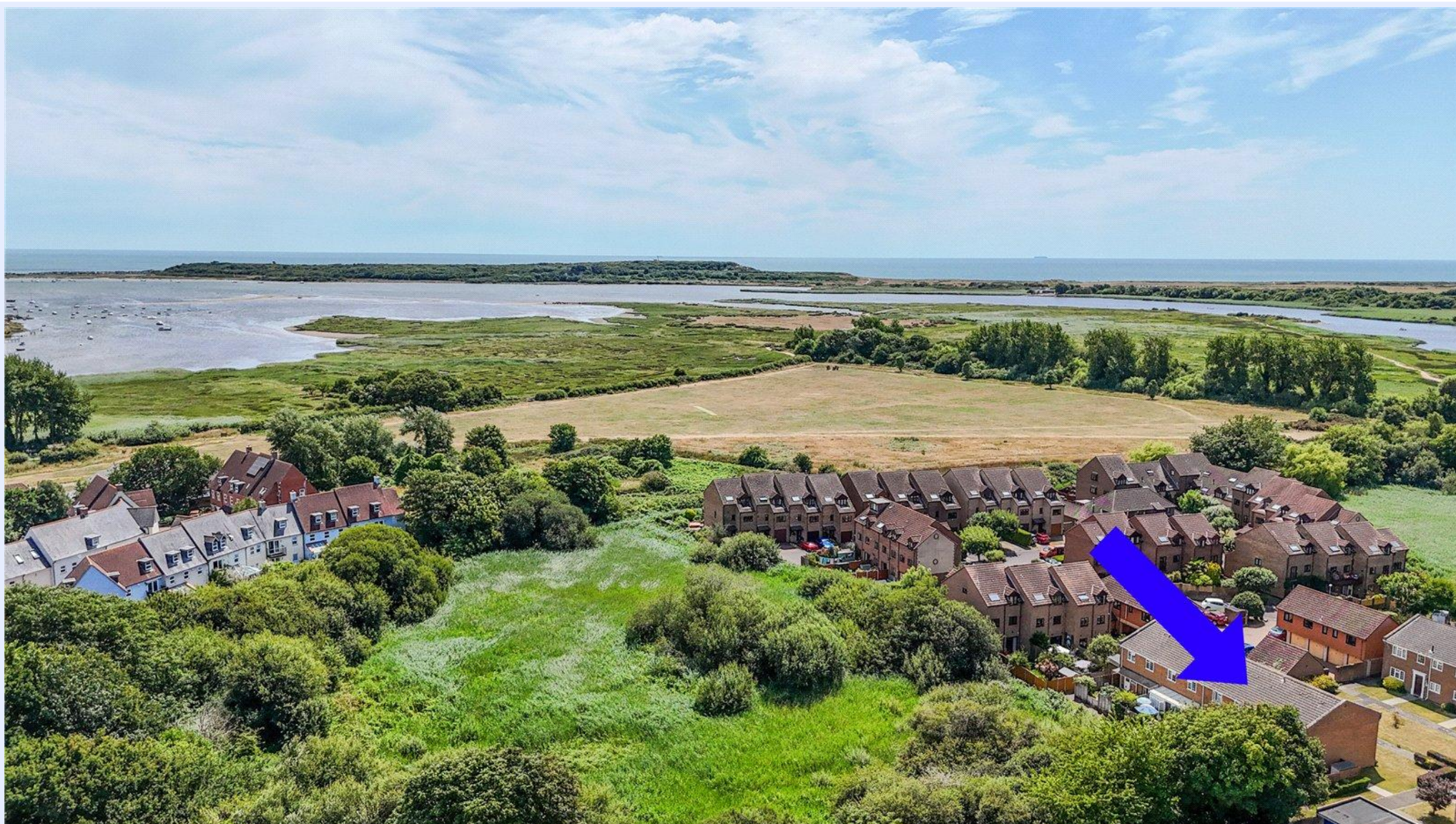
First Floor



Total Area: 106.0 m² ... 1141 ft²
All measurements are approximate and for display purposes only







mitchells.uk.com
mundeford@mitchells.uk.com
01202 499295

Mundeford
Cambridge House
112-114 Stanpit
BH23 3ND

