



10 Nea Road, Highcliffe on Sea, BH23 4NA

£1,500,000

Mitchells
1963 — TODAY



Nea Road, Highcliff on Sea

A simply stunning home of about 3100 sqft, extensively renovated in 2021 and presented for sale in show home condition. Situated in a brilliant location close to Highcliffe Castle and the beach, this outstanding property offers luxurious living space with a first-class internal finish. We sold this home to the current buyer on behalf of a very well known, local developer whom we have dealt with for many years. The standard of finish is exemplary, and the layout perfectly designed for modern day living with a spectacular open plan kitchen/family space with a central island and large first floor bedrooms with four designer bath/shower rooms (two en-suite). The garden faces south-west and enjoys all day sunshine whilst generous garaging and frontage provides ample parking. Quick possession available.

- **FOUR BEDROOMS • FOUR BATH/SHOWER ROOMS (THREE EN-SUITE) • FAMILY BATHROOM • KITCHEN/LIVING ROOM • UTILITY ROOM • LOUNGE • LARGE HALL • GARAGE • GARDENS • OFF-ROAD PARKING •**



The Property

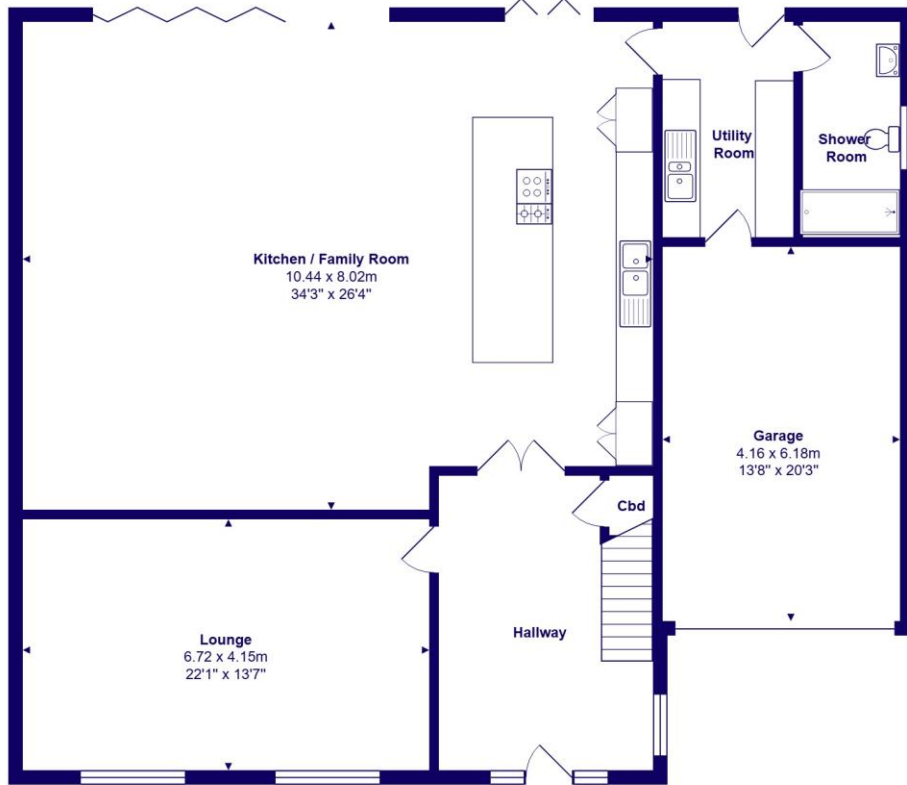
- Striking, architecturally designed home with superior accommodation over two floors
- Impressive reception hall with feature staircase and herringbone flooring that leads to the kitchen/family room
- 34'2 x 26'5 kitchen/family room, contemporary kitchen that is fully integrated, quartz worktops and two sets of bi-fold doors to the garden
- New gas heating and wiring, aluminium double glazed windows, quality floor coverings, all installed 2021
- Plantation style shutters and electric blinds to most windows
- Sanitary ware and tiling in all four bath/shower rooms by Porcelanosa
- Short walk to Highcliffe Castle with access to the beach, catchment area for both Highcliffe Schools
- An incredible home, being sold due to job relocation- Vacant possession
- Planning granted for first floor extension to master bedroom
- EPC 'B'
- Council Tax 'E' £2658.58



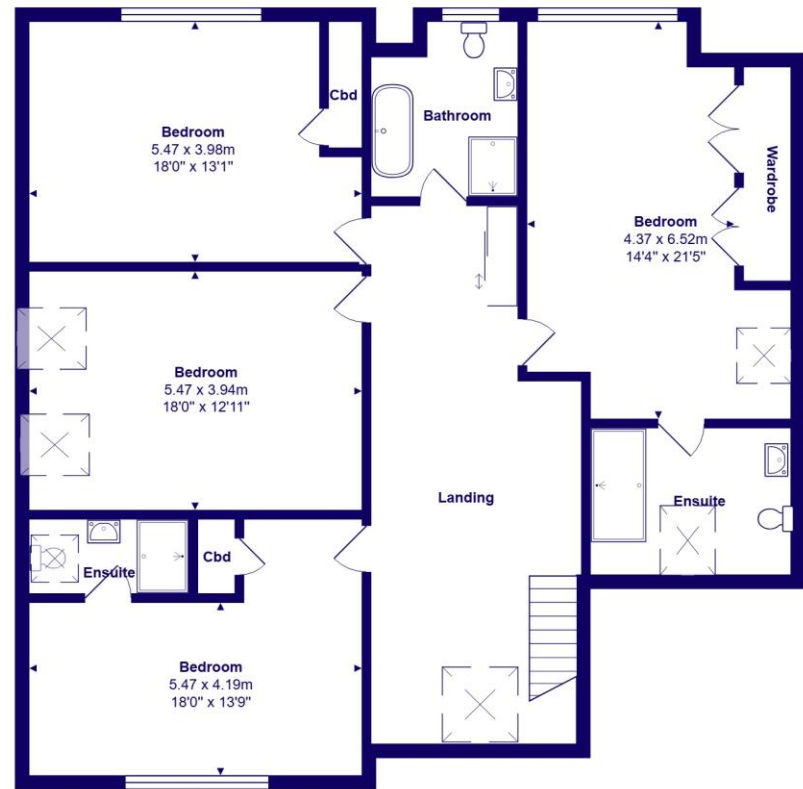


Location

Highcliffe is a small village in the borough of Christchurch, Dorset. The village lies on a picturesque stretch of Solent coastline with views over Christchurch Bay to the Isle of Wight. Fuelled by its enviable location, coastal walks, main line railway links to London (in under two hours) excellent schools and the popularity of the Chewton Glen Hotel, the Highcliffe Golf Course and the Nature Reserve at Steamer Point, Highcliffe is a popular area for those relocating to the coast.



Ground Floor



First Floor



Total Area: 284.5 m² ... 3062 ft² (excluding garage)
 All measurements are approximate and for display purposes only







mitchells.uk.com
highcliffe@mitchells.uk.com
01425 272206

Highcliffe on Sea
284 Lymington Road
Highcliffe on Sea
BH23 4TH

