



6 Moonrakers Way, Highcliffe on Sea, BH23 4RD

£795,000

Mitchells
1963 — TODAY



Moonrakers Way, Highcliffe on Sea

An immaculate four bedroom detached chalet bungalow in the heart of Highcliffe that has been thoroughly modernised by the current vendors creating a modern and functional living space approaching 1800 sqft. The property also benefits from a good size frontage and private southwest facing rear garden. The local shops at Sauflands are within easy walking distance and the high street with its range of shops and eateries is a little further on.

- **FOUR BEDROOMS • TWO BATH/SHOWER ROOMS (ONE EN-SUITE) • KITCHEN/BREAKFAST ROOM • LIVING ROOM**
- **CONSERVATORY • GF WC • GARAGE • GARDENS • OFF-ROAD PARKING •**



The Property

- Four good sized bedrooms
- Ground floor master bedroom with en-suite shower room
- Family bathroom and separate wc
- A lovely spacious, modern kitchen/dining room leading into the conservatory extension enjoying views over the private garden
- Formal Lounge with access onto the conservatory
- Gas fired central heating & upvc double glazing
- Large driveway with drive-through integral garage
- Fantastic outside dining/seating area ideal for entertaining
- Private, well established southwest facing rear garden
- Summer house/home office, hard wired for internet access, light & power
- Fantastic Location close to local bus routes, shops and nearby beauty spot of Nea Meadows
- EPC 'C'
- Council Tax 'E' £2658.58

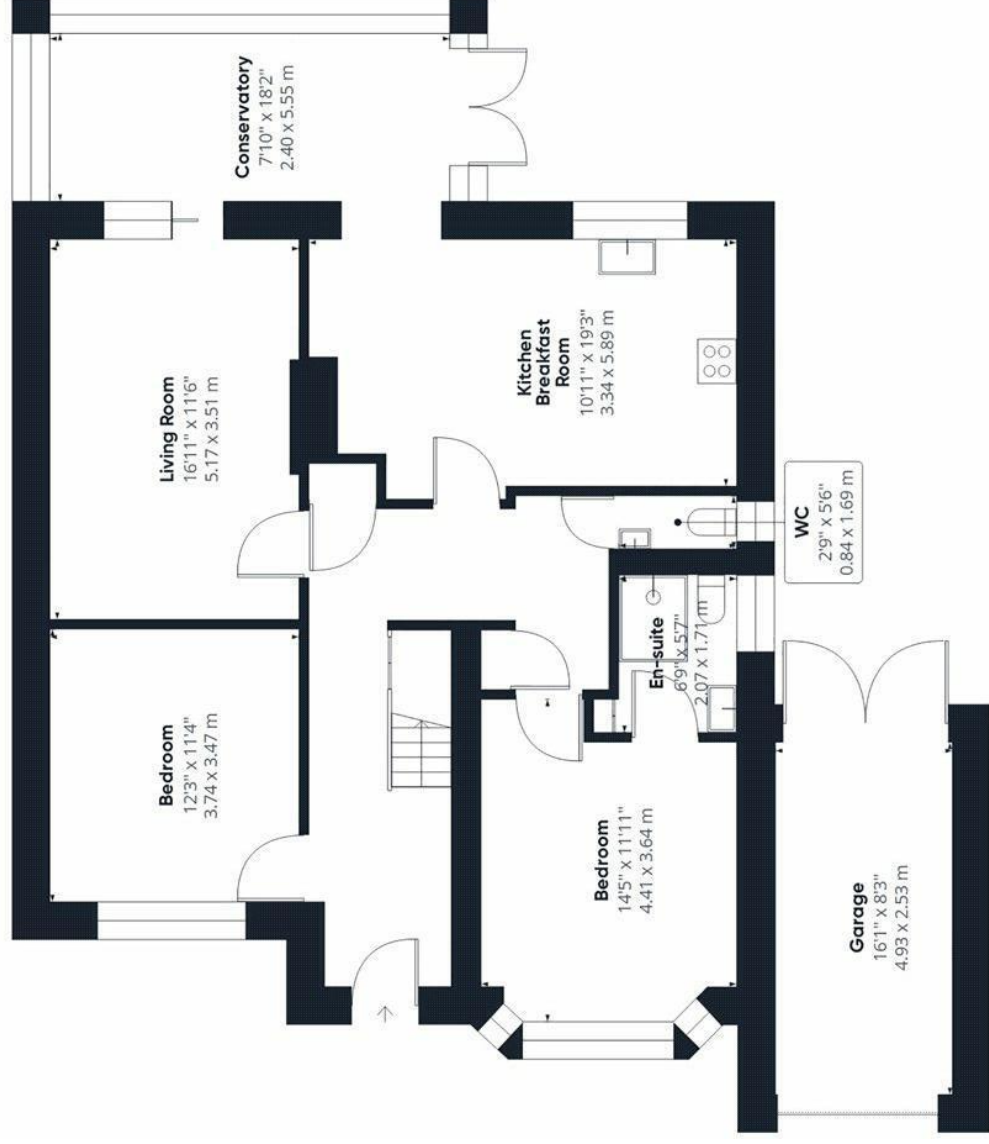




Location

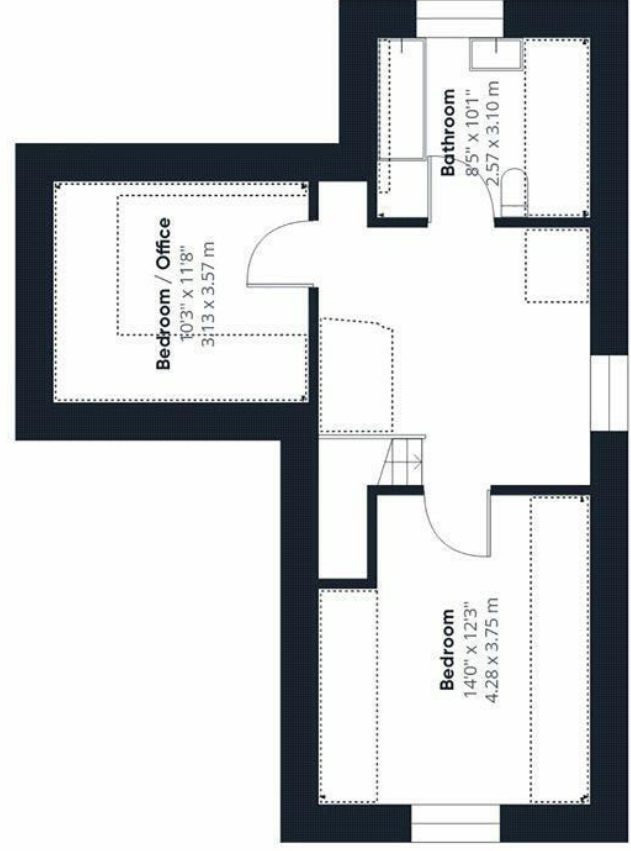
Highcliffe is a small village in the borough of Christchurch, Dorset. The village lies on a picturesque stretch of Solent coastline with views over Christchurch Bay to the Isle of Wight. Fuelled by its enviable location, coastal walks, main line railway links to London (in under two hours) excellent schools and the popularity of the Chewton Glen Hotel, the Highcliffe Golf Course and the Nature Reserve at Steamer Point, Highcliffe is a popular area for those relocating to the coast.





Approximate total area ⁽¹⁾

1778.17 ft²
165.20 m²







mitchells.uk.com
highcliffe@mitchells.uk.com
01425 272206

Highcliffe on Sea
284 Lymington Road
Highcliffe on Sea
BH23 4TH

