



3 Meadowsweet Close, Highcliffe on Sea, BH23 4FY

£650,000

Mitchells
1963 — TODAY



Meadowsweet Close, Highcliffe on Sea

An imposing detached house of approx. 1415sqft with a detached double garage on the highly acclaimed Hoburne Farm Development. Built to traditional standards with an exacting finish and boasting large airy rooms, great living space, generous bedrooms and enclosed landscaped gardens. The high street in Highcliffe is about one mile away and the beach is within walking distance. Highcliffe School catchment.

- FOUR BEDROOMS • TWO BATH/SHOWER ROOMS (ONE EN-SUITE) • KITCHEN/DINING ROOM • UTILITY ROOM • GROUND FLOOR • LOUNGE • SUN LOUNGE • OFF-ROAD PARKING • DOUBLE GARAGE • GARDENS •



The Property

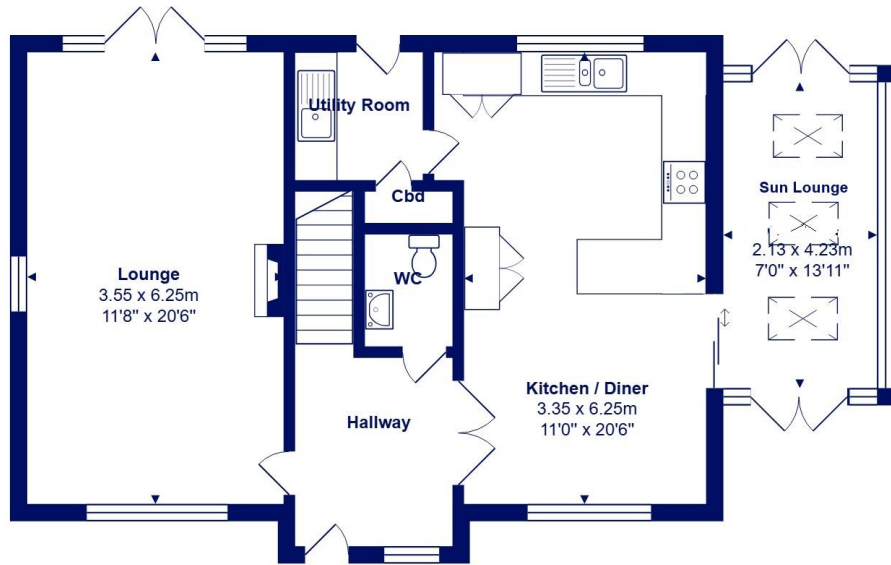
- Four double first floor bedrooms
- Two luxury bath/shower rooms (one en-suite)
- Stylish open plan kitchen/diner with integrated appliances
- Sun lounge extension to the side, accessed from the kitchen/diner
- Spacious dual aspect lounge with French doors onto the rear garden
- Ground floor wc
- Quality oak doors, Karndean flooring
- Gas CH & uPVC double glazing
- High spec heating system with Vaillant boilers and Solar panels,
- External elevations with part render & weatherboarding
- Double garage and off-road parking
- Short walk to Friars Cliff beach and Sainsbury's superstore and the local shops at Saulflands
- Council Tax 'E' £2658.58
- EPC 'B'



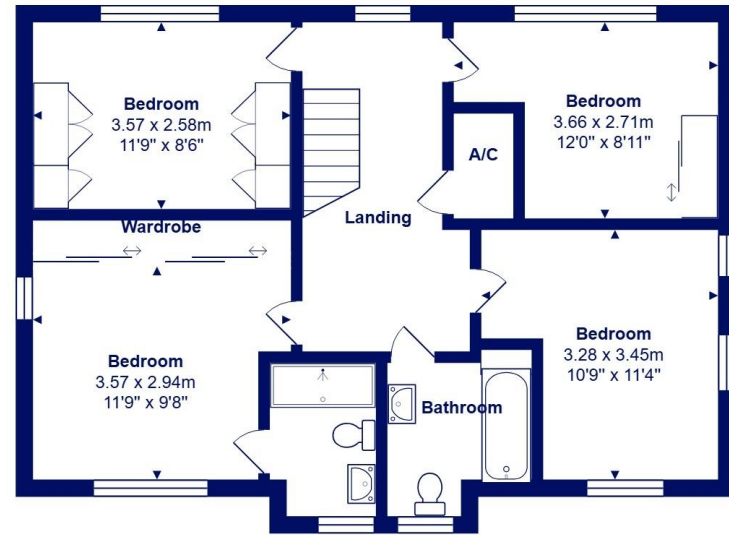


Location

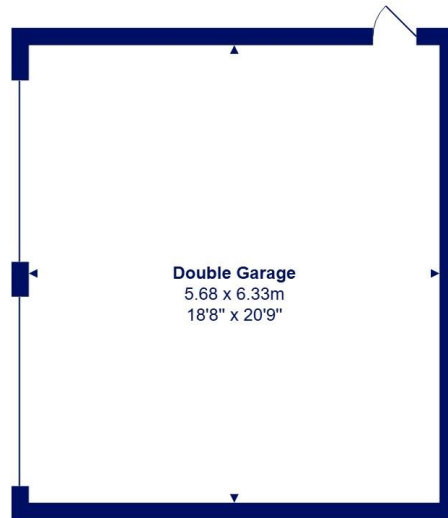
Highcliffe is a small village in the borough of Christchurch, Dorset. The village lies on a picturesque stretch of Solent coastline with views over Christchurch Bay to the Isle of Wight. Fuelled by its enviable location, coastal walks, main line railway links to London (in under two hours) excellent schools and the popularity of the Chewton Glen Hotel, the Highcliffe Golf Course and the Nature Reserve at Steamer Point, Highcliffe is a popular area for those relocating to the coast.



Ground Floor



First Floor



Double Garage
5.68 x 6.33m
18'8" x 20'9"





mitchells.uk.com
highcliffe@mitchells.uk.com
01425 272206

Highcliffe on Sea
284 Lymington Road
Highcliffe on Sea
BH23 4TH

