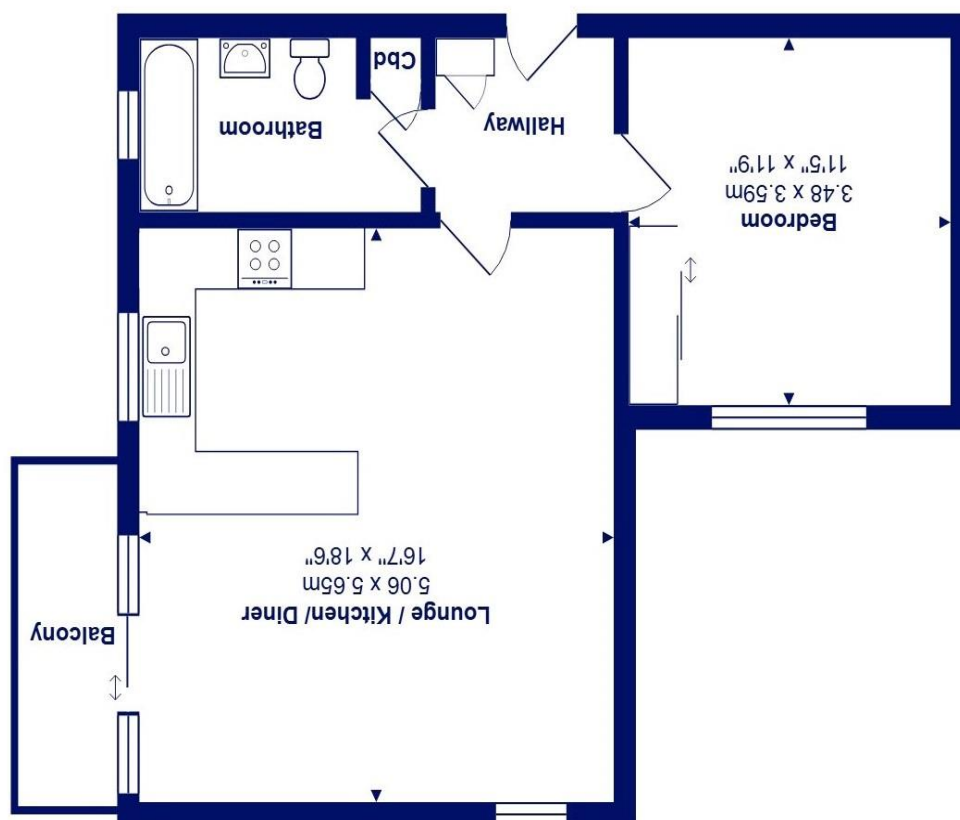




Total Area: 51.3 m<sup>2</sup> ... 552 ft<sup>2</sup> (excluding balcony)  
All measurements are approximate and for display purposes only



Ground Floor



6 Diana Court, Lymington Road, Highcliffe on Sea, BH23 5EB £160,000

**Mitchells**  
1963 — TODAY



A spacious one bedroom first floor South facing balcony apartment within the Diana Court development which was designed by the renowned local architects Cheshire Robbins. This apartment offers modern open plan living accommodation which totals approx. 550sqft.

Set in a village centre location with all of Highcliffe's amenities on your doorstep and also offering easy access to the beaches with a resident only path leading from the rear of the development towards the cliff top. No forward chain. NO DOGS

- One double bedroom
- Spacious open plan kitchen/living area
- Lovely sunny South facing sun balcony
- Family bathroom
- Gas fired central heating with new radiators in 2024
- Allocated parking space
- Fantastic village centre location
- Short walk to cliff top and beach
- Share of freehold (approx 970 years remaining on lease)
- Service Charge £1,300 p/a
- Council Tax 'C' £1933.52
- EPC 'C'

