



*22 Dunbar Crescent, Highcliffe on Sea, BH23 5RY*

*£625,000*

**Mitchells**  
1963 — TODAY







# *Dunbar Crescent, Highcliffe on Sea*

A very smart chalet bungalow of about 1600sqft, situated in this extremely quiet crescent and presented in first class condition. The property has been skilfully converted and now offers much larger space than it would appear from outside, with modern fittings and a lovely open plan living area. This lovely home enjoys a sunny, south facing garden and is one of the quietest locations in Highcliffe with no passing traffic yet still within walking distance of the village. It has been well modernised and offers flexible accommodation with up to four bedrooms if required- you could quite easily utilise one of the ground floor bedrooms as a separate sitting room/tv lounge/study and still have three double bedrooms.

- FOUR BEDROOMS • TWO BATHROOMS (ONE GF) • KITCHEN/LOUNGE/DINER • CONSERVATORY • GARAGE • OFF-ROAD PARKING • GARDENS •



## The Property

- Immaculate detached home in a great location
- Stylish open living space with a feature log burner and large picture window to the front
- Quality fitted kitchen with some integrated appliances
- Two refitted bath/shower rooms
- Delightful rear garden with all day sunshine, garaging and plenty of parking
- Short stroll to Cranemoor Common which is excellent for dog walking and also leads to the train station
- Gas fired central heating, UPVC double glazed windows and tasteful internal décor
- About a mile to the village centre with the cliff top and beach being a little further on
- Council Tax 'E' £2658.58
- EPC 'C'



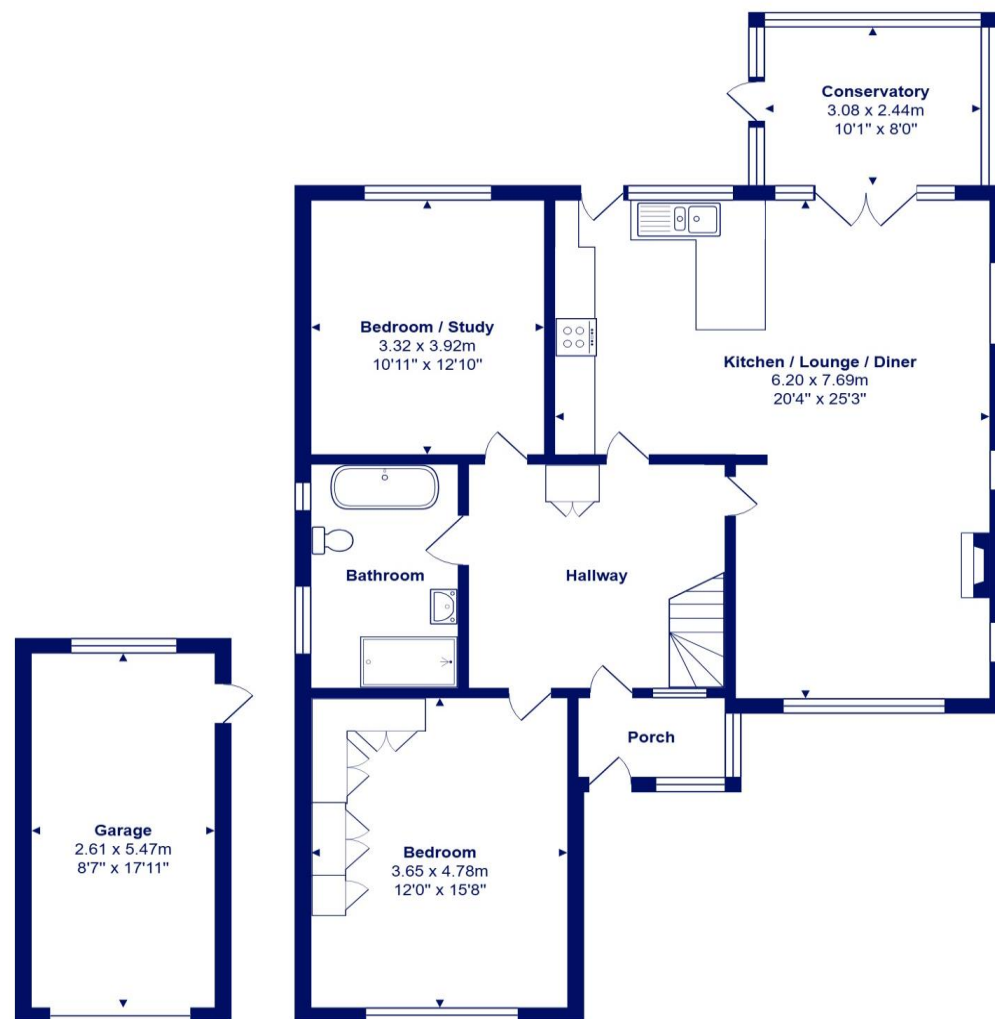




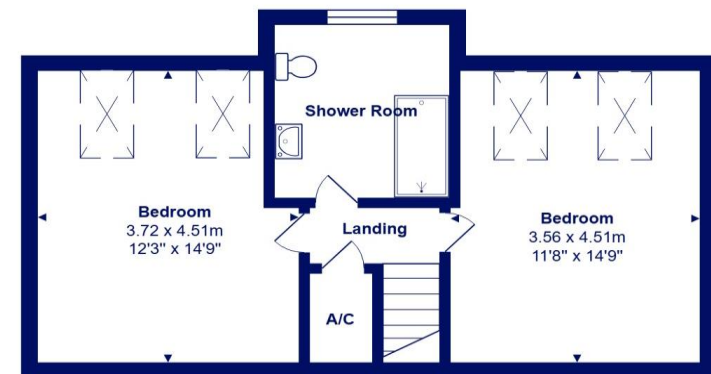
## Location

Highcliffe is a small village in the borough of Christchurch, Dorset. The village lies on a picturesque stretch of Solent coastline with views over Christchurch Bay to the Isle of Wight. Fuelled by its enviable location, coastal walks, main line railway links to London (in under two hours) excellent schools and the popularity of the Chewton Glen Hotel, the Highcliffe Golf Course and the Nature Reserve at Steamer Point, Highcliffe is a popular area for those relocating to the coast.





**Ground Floor**



**First Floor**



Total Area: 147.2 m<sup>2</sup> ... 1584 ft<sup>2</sup> (excluding garage)  
 All measurements are approximate and for display purposes only











[mitchells.uk.com](http://mitchells.uk.com)  
[highcliffe@mitchells.uk.com](mailto:highcliffe@mitchells.uk.com)  
01425 272206

Highcliffe on Sea  
284 Lymington Road  
Highcliffe on Sea  
BH23 4TH

