



8A The Cul De Sac, Hoburne Naish, BH25 7RU

£325,000

Mitchells
1963 — TODAY



*8A The Cul De Sac
Hoburne Naish
New Milton
Hampshire
BH25 7RU*

This fantastic brand new double unit residential park home is situated on this highly desirable development just a short walk to Barton On Sea clifftop and beach and benefitting from the fantastic facilities available at Hoburne Naish. The property has been finished to an exceptional standard with features including a master bedroom with a walk in dressing room, a luxury family bathroom, a spacious kitchen/dining room, a separate double aspect sitting room, a driveway and a private garden.

- Entrance Hall
- Kitchen/Dining Room
- Sitting Room
- Family Bathroom
- Two Double Bedrooms
- Walk In Dressing Room
- Driveway
- Private Garden



The Property

Entrance hall with carpeted flooring, coats cupboard housing electrical consumer unit, additional storage cupboard and radiator.

The kitchen/dining room is a particular feature of this property with a fantastic range of cream wall and base units with contrasting granite effect worktop, stainless steel sink with mixer tap over and drainer and integrated appliances include a four burner induction hob with tiled splashback and extractor fan over, full sized dishwasher, washer dryer, tall stand up fridge freezer and a cupboard housing the Worcester combination boiler. The room has an attractive vaulted ceiling and opens through to the dining room with a four seater table and chairs and a back door leading out to the garden.

Double casement doors lead through to the sitting room with a three piece suite, a bright double aspect, feature electric fire with attractive surround, vaulted ceiling and recess ceiling spotlights.

The family bathroom has a high specification white suite comprising a panel bath with mixer tap over, independent shower attachments with folding glass shower screen, WC, wall hung wash hand basin with mixer tap over and storage beneath, chrome heated towel rail and wall mounted mirror.

Both bedrooms are fantastic double bedrooms with bedroom two having built in wardrobes and the master enjoying its own walk in wardrobe.

The property comes fully furnished and is offered with immediate possession.





Gardens & Grounds

To the front of the property is a block paved driveway giving access to a block paved path leading to the front door with the garden laid to lawn and surrounded by high level fencing making it extremely private and secluded.

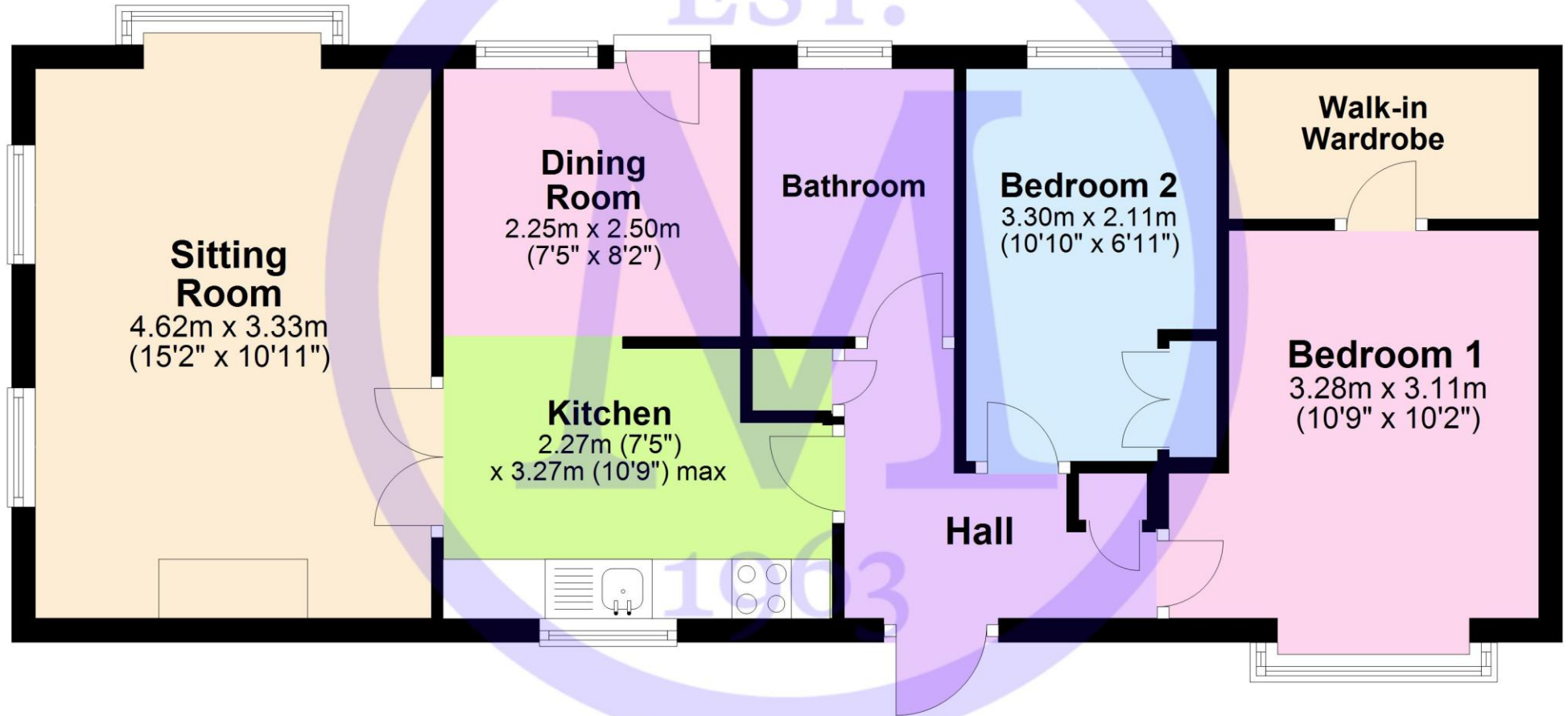
The property must be viewed to be fully appreciated.

Services

- Mains gas, electric, drainage and water
- Council Tax Band A
- Energy Performance Rating To be confirmed

Floor Plan

Approx. 58.9 sq. metres (633.5 sq. feet)



Omar Image, 40 x 16, Barton On Sea



Situation

Superb clifftop location with easy access to the beautiful beaches, the stunning clifftop walks, the open forest of the New Forest National Park and the nearby towns of Highcliffe on Sea and New Milton, Facilities include an impressive entertainment complex, heated pools, adventure golf, fitness suite, multi-use games area, brasserie and café among others.

Directions

From Mitchells proceed along Old Milton Road, approaching A337 turn right. After approximately 1 mile turn left into Field Place continue straight and take the second turning on the right. Turn right again and the property will be found at the end.





Mitchells.uk.com
info@mitchells.uk.com
01425 616411

Centenary Buildings
8-10 Old Milton Road
New Milton
Hampshire
BH25 6DT

Mitchells
1963 — TODAY

