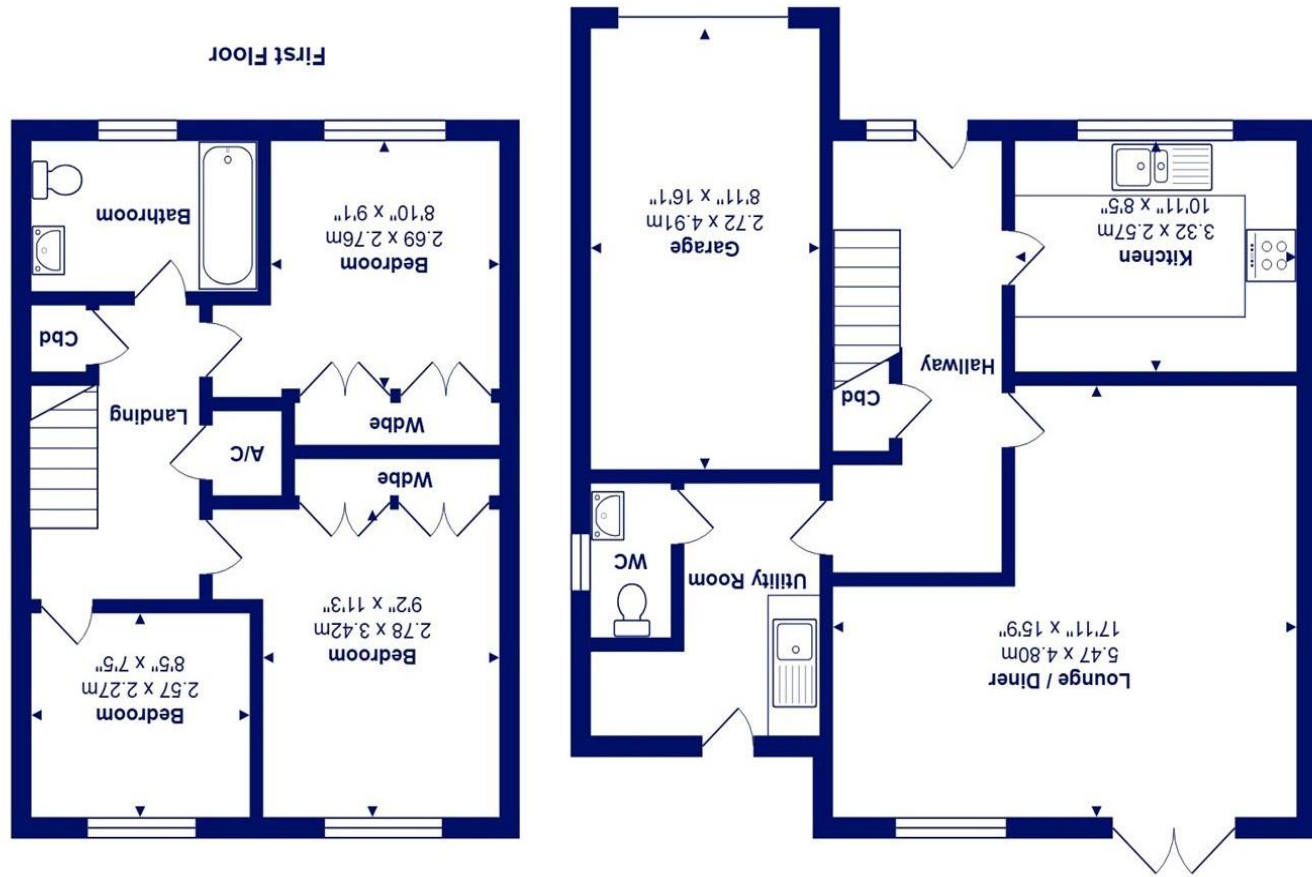




Total Area: 90.7 m² ... 976 ft² (excluding garage)
All measurements are approximate and for display purposes only



Ground Floor



2 Cornflower Drive, Highcliffe On Sea, BH23 4UH

£475,000

Mitchells
1963 — TODAY

A very smart semi-detached house of about 975sqft on the highly acclaimed Hoburne Farm Development with modern fittings spacious rooms and a larger than average garden. The house has been very well looked after and is offered for sale with no forward chain.

This pair of semis were the last ones Hoburne built and are different in layout to the other semis on the estate. Completed in 2009, the house shows very well with up-to-date fittings, flat plastered ceilings, neutral décor and a garden that offers space for extension if required.

- Traditionally built semi-detached house in the Highcliffe Schools catchment area
- Three good sized bedrooms, two with fitted wardrobes
- Spacious lounge dining room with access onto the garden
- Modern fitted kitchen with separate utility room
- Fully tiled family bathroom and downstairs wc
- Gas fired central heating, UPVC double glazed windows, integral garage and off-road parking
- Walking distance of Saulfland shops, bus stop and Friars Cliff beach
- Offered for sale with no forward chain
- Council Tax 'D' £2287.80
- EPC 'C'

