



44 Willowdene Close, New Milton, BH25 5BX

£359,950

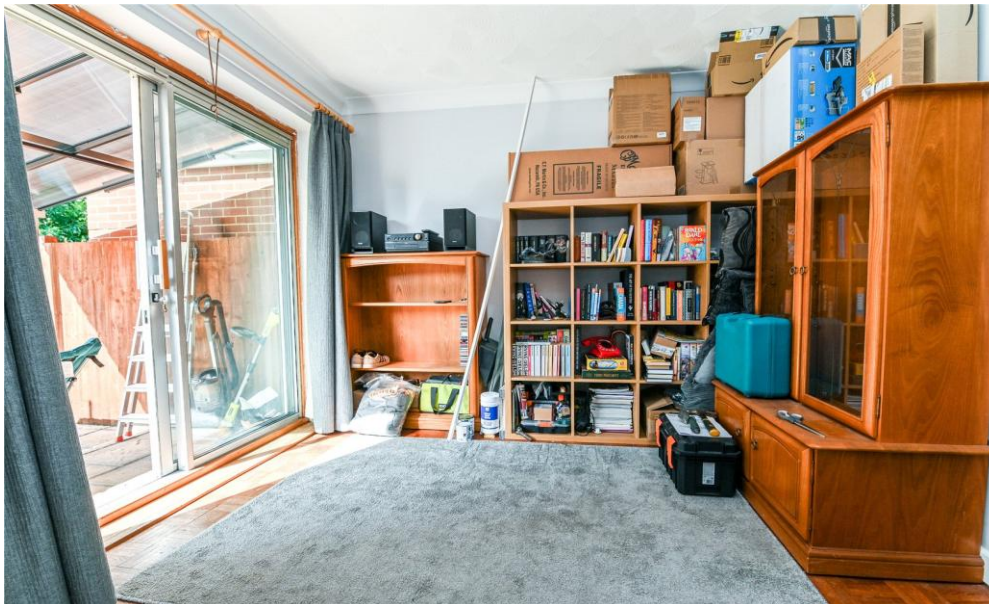
Mitchells
1963 — TODAY



*44 Willowdene Close
New Milton
Hampshire
BH25 5BX*

A fantastic sized three bedroom house situated in a quiet residential location, within walking distance of New Milton town centre and local amenities. The property offers a spacious lounge, a dining room, a kitchen, three double bedrooms, a modern family bathroom, a private rear garden, a garage, and a driveway for three to four vehicles.

- Entrance Porch
- Sitting Room
- Dining Room
- Kitchen
- Three Double Bedrooms
- Family Bathroom
- Private West-Facing Rear Garden
- Driveway
- Garage



The Property

Entrance porch with UPVC double glazed windows and front door.

The sitting room enjoys a lovely view over the large frontage, and a feature fireplace.

Dining room with space for a four to six seater dining table and chairs, and sliding doors opening onto the private rear garden.

The kitchen overlooks the rear garden with tiled flooring, a generous range of timber wall and base units, a contrasting marble effect worktop, a useful larder cupboard, a casement door onto the rear garden, a one and a half bowl sink unit with a mixer tap and drainer, and space for an oven, washing machine, and fridge/freezer.

First floor landing with a hatch to the roof space and an airing cupboard.

Three good sized double bedrooms, with bedroom one enjoying a lovely aspect over the garden.

The family bathroom has been recently modernised with fully tiled walls, tiled flooring, a UPVC double glazed window, recessed ceiling spotlights, and a suite comprising a his and hers sink unit with storage beneath, a ladder style heated towel rail, a wall mounted mirror with an electrical shaving point, a WC, and a P-shaped panel bath with a mixer tap and waterfall shower attachments.

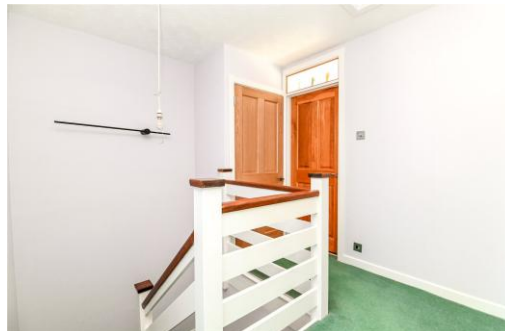




Gardens & Grounds

To the front of the property is a large tarmac driveway providing off-road parking for three to four vehicles and giving access to the garage with an up and over door. There is also an area of lawn with mature shrubs and a paved pathway leading to the front door.

The garden is a fantastic size, with a paved patio area adjoining the rear of the property with a recently fitted pergola, a large area of lawn, a timber garden shed, and a gate providing rear access.

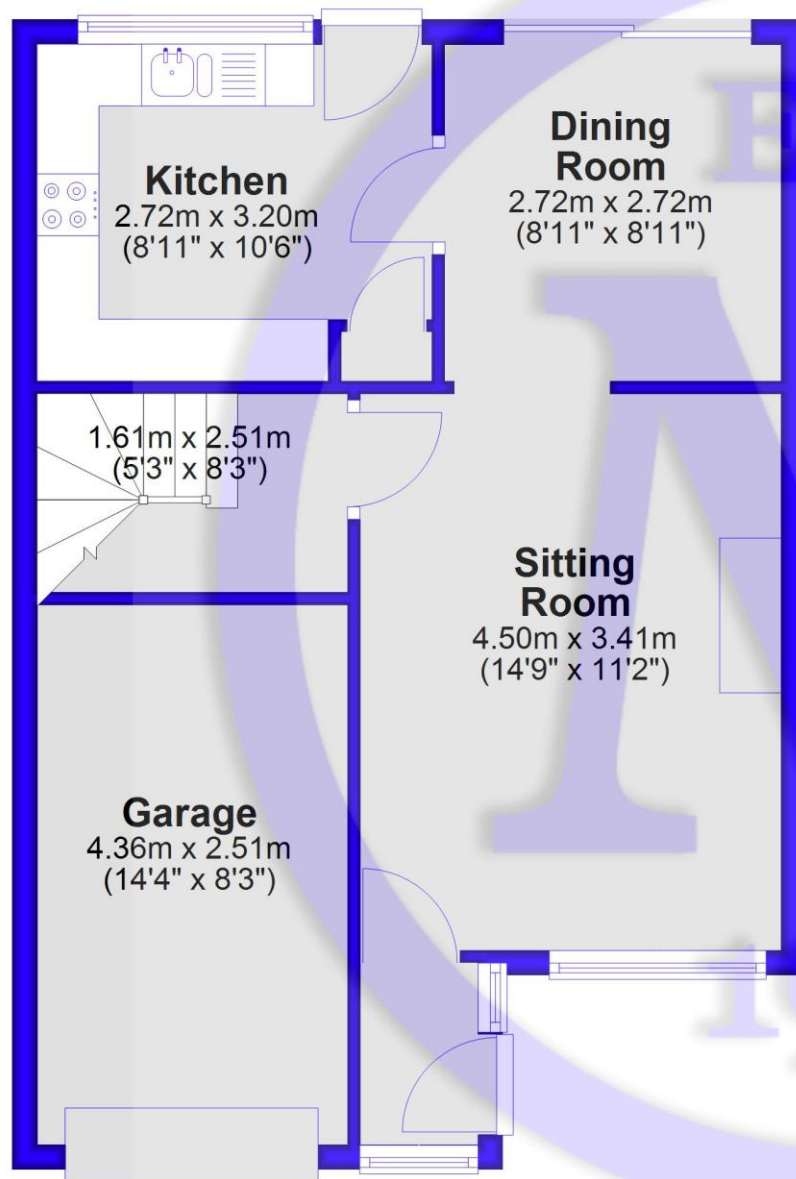


Services

- Mains gas, electric, drainage and water
- Council Tax Band C
- Energy Performance Rating To be confirmed

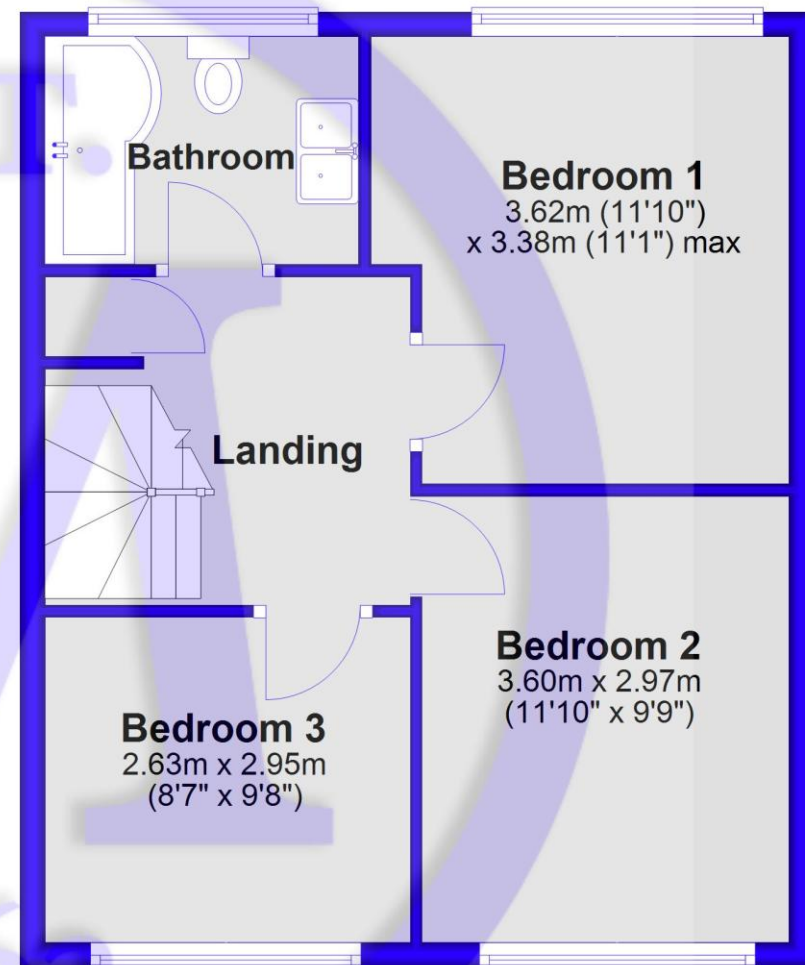
Ground Floor

Approx. 49.7 sq. metres (534.5 sq. feet)



First Floor

Approx. 44.1 sq. metres (474.2 sq. feet)



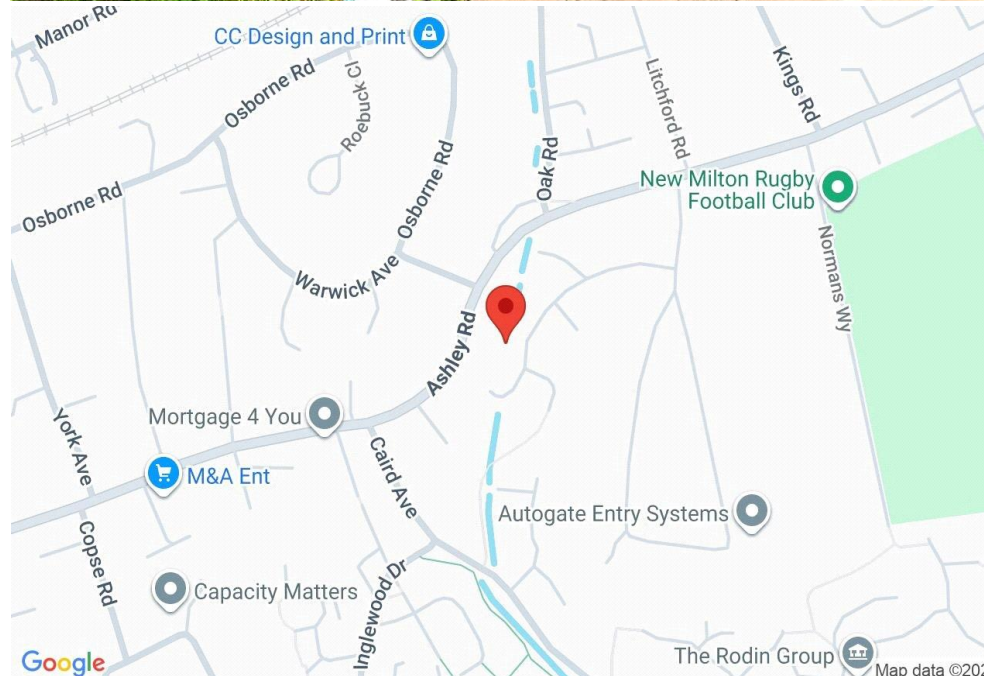
Total area: approx. 93.7 sq. metres (1008.7 sq. feet)

Situation

New Milton is a thriving market town situated on the western edge of Hampshire, enjoying a prime location along a picturesque stretch of the Solent coastline. The area offers stunning views across Christchurch Bay to the Isle of Wight and is renowned for its beautiful coastal walks. With a mainline railway station providing direct access to London Waterloo in under two hours, the town is perfectly positioned for commuters and those seeking a coastal lifestyle. New Milton also boasts excellent state and private schools, a 27-hole links-style golf course, and the renowned Chewton Glen Hotel, making it an exceptionally popular destination for those looking to relocate to the coast.

Directions

From Mitchells, proceed across the traffic lights into Ashley Road. Continue through the next set of lights, and upon reaching the top of the hill, turn right into High Ridge Crescent. Take the first right into Willowdene Close, and the property will be found on the right hand side.





Mitchells.uk.com
info@mitchells.uk.com
01425 616411

Centenary Buildings
8-10 Old Milton Road
New Milton
Hampshire
BH25 6DT

Mitchells
1963 — TODAY

