



7 Ranelagh Road, Highcliffe on Sea, BH23 5DY

OIEO £550,000

Mitchells
1963 — TODAY



Ranelagh Road, Highcliffe on Sea

Occupying a fabulous position, moments from the Highcliffe cliff top and a short level stroll to the high street and its amenities. This delightful and beautifully presented bungalow offers two/ three bedrooms, bath/shower room with separate wc, kitchen/dining room and large L-shaped lounge easily maintained rear garden and lots of off-road parking and garage in a nearby block. No forward chain.

- TWO/THREE BEDROOMS • BATHROOM • KITCHEN/BREAKFAST ROOM • SEPARATE WC
- OFF-ROAD PARKING • SINGLE GARAGE • GARDENS •



The Property

- Enviaible location close to both sea and shops
- Extended to create very modern Kitchen dining room with patio doors onto the rear garden
- Large L-shaped sitting room
- Extremely smart bath and shower room with separate wc
- Good size entrance sun porch
- Gas fired central heating, upvc double glazing and neutral décor throughout
- A stone's throw from the beach access
- Garage in a nearby block and plenty of off-road parking
- Delightful and easily maintained rear garden with area of lawn and patio
- New carpets and fresh decoration throughout
- Council Tax 'E' £2658.58
- EPC 'D'



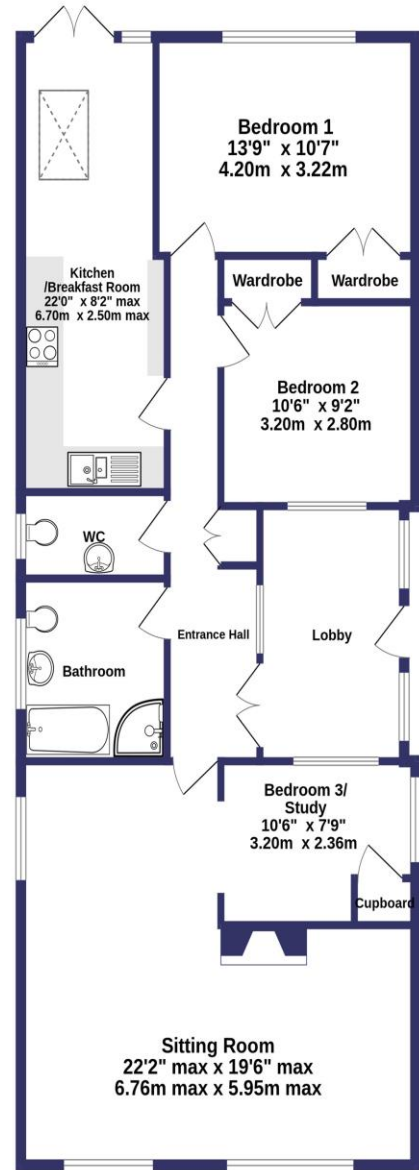


Location

Highcliffe is a small village in the borough of Christchurch, Dorset. The village lies on a picturesque stretch of Solent coastline with views over Christchurch Bay to the Isle of Wight. Fuelled by its enviable location, coastal walks, main line railway links to London (in under two hours) excellent schools and the popularity of the Chewton Glen Hotel, the Highcliffe Golf Course and the Nature Reserve at Steamer Point, Highcliffe is a popular area for those relocating to the coast.



GROUND FLOOR
1191 sq.ft. (110.7 sq.m.) approx.



TOTAL FLOOR AREA : 1191 sq.ft. (110.7 sq.m.) approx.

Whilst every attempt has been made to ensure the accuracy of the floorplan contained here, measurements of doors, windows, rooms and any other items are approximate and no responsibility is taken for any error, omission or mis-statement. This plan is for illustrative purposes only and should be used as such by any prospective purchaser. The services, systems and appliances shown have not been tested and no guarantee as to their operability or efficiency can be given.
Made with Metropix ©2024







mitchells.uk.com
highcliffe@mitchells.uk.com
01425 272206

Highcliffe
284 Lymington Road
Highcliffe
BH23 5ET

