



17 Oakwood Road, Highcliffe on Sea, BH23 5NY £485,000 Freehold

Mitchells
1963 — TODAY



Oakwood Road, Highcliffe on Sea

A gorgeous end terrace townhouse with attractive Georgian style elevations offering a beautifully appointed interior and situated on one of the most sought after parts of the Latimers development. The property has been modernised throughout by the current vendors and enjoys lovely bright living accommodation on the ground floor leading onto a modern a UPVC conservatory extension. Both the kitchen and first floor bathroom are luxuriously appointed and there are also three comfortable bedrooms on the first floor. The courtyard style garden to the rear faces due south and the house benefits from a delightful aspect over the well-tended communal gardens and grounds to the front. Located approximately one mile from the main High Street shopping centre with the cliff top and beach being a little further on.

- **THREE BEDROOMS • FAMILY BATHROOM • LOUNGE/DINER • CONSERVATORY • GF WC • GARAGE • GARDENS •**



The Property

- Three generous bedrooms with built in wardrobes
- Re-fitted kitchen with granite worktops and some built in appliances
- Large entrance hallway
- Large dual aspect lounge/ dining room
- Large bathroom with separate shower
- Ground floor wc
- Superb full width conservatory
- South facing courtyard garden
- Garage in a nearby block
- Extremely quiet position with no passing traffic and lovely outlook over the well-tended communal grounds and gardens
- Service charge for the upkeep of the communal grounds £645 p/a
- EPC 'D'
- Council Tax 'D' £2287.80

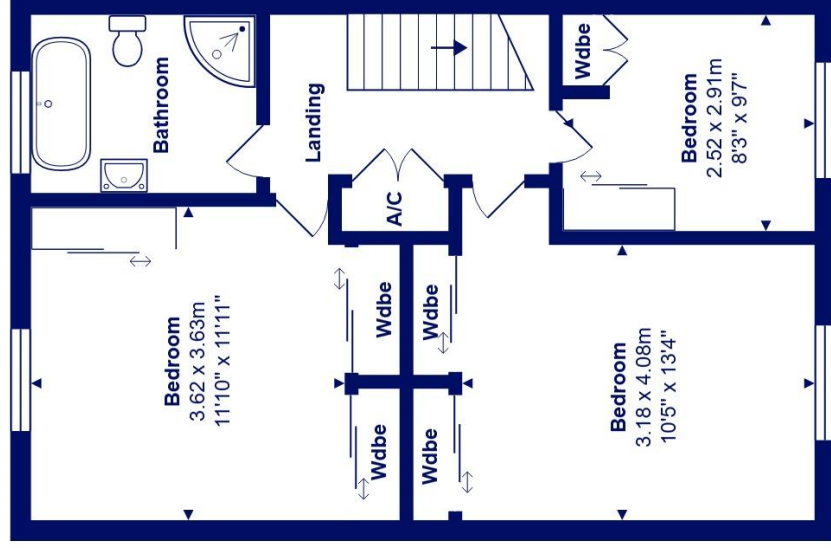
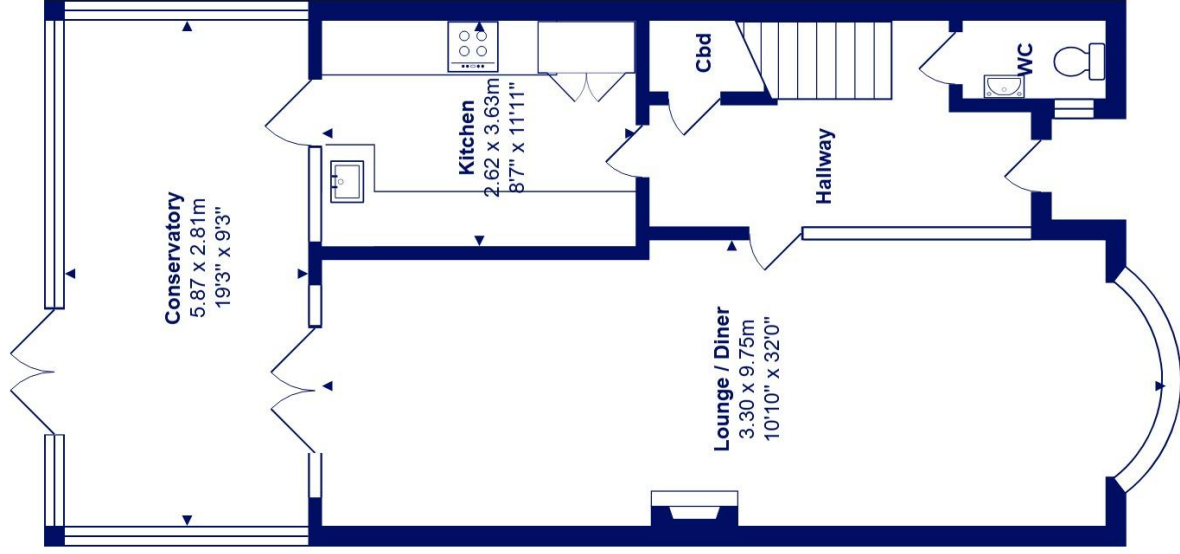




Location

Highcliffe is a small village in the borough of Christchurch, Dorset. The village lies on a picturesque stretch of Solent coastline with views over Christchurch Bay to the Isle of Wight. Fuelled by its enviable location, coastal walks, main line railway links to London (in under two hours) excellent schools and the popularity of the Chewton Glen Hotel, the Highcliffe Golf Course and the Nature Reserve at Steamer Point, Highcliffe is a popular area for those relocating to the coast.

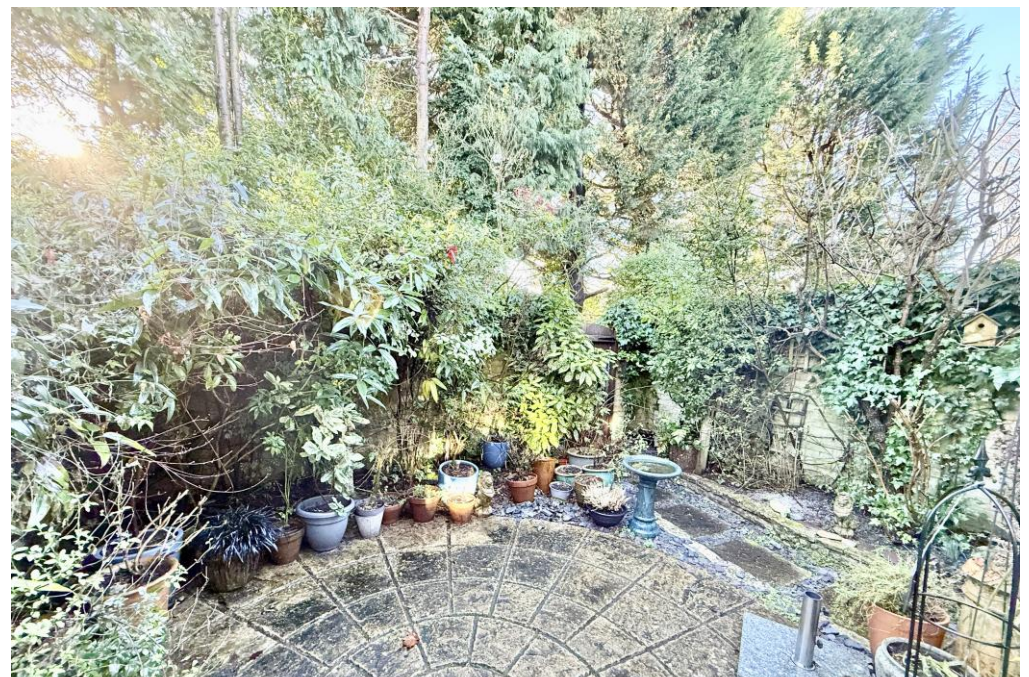
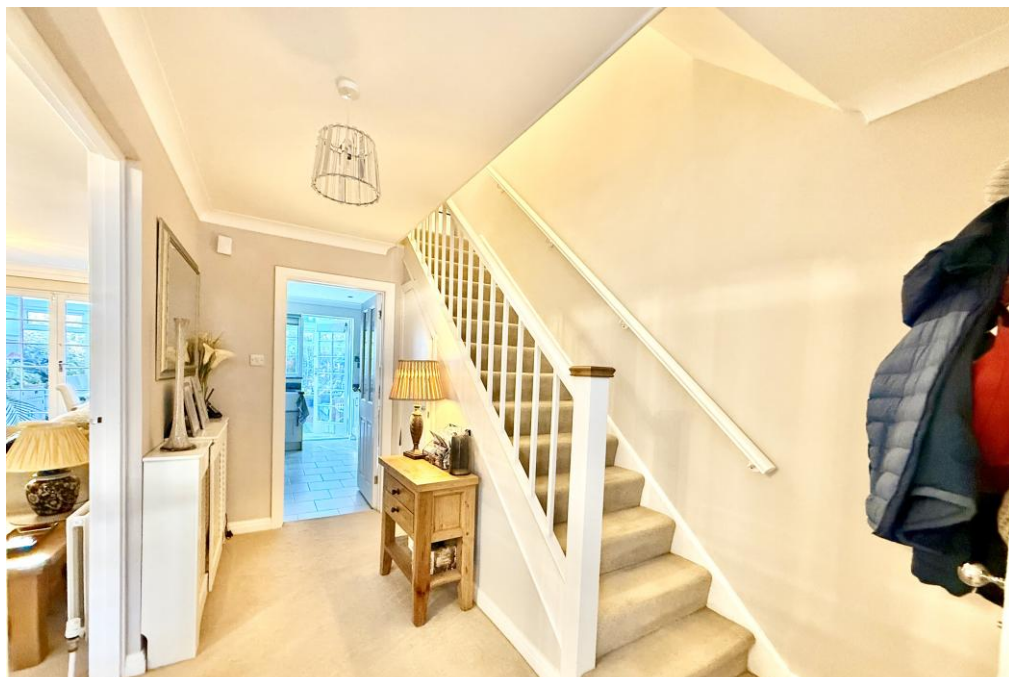




Total Area: 122.7 m² ... 1320 ft²

All measurements are approximate and for display purposes only







mitchells.uk.com
highcliffe@mitchells.uk.com
01425 272206

Highcliffe
284 Lymington Road
Highcliffe on Sea
BH23 5EB

