



7 Elphinstone Road, Highcliffe on Sea, BH23 5LL

£1,225,000

Mitchells
1963 — TODAY



Elphinstone Road, Highcliffe on Sea

A stylish, New England inspired home that has been professionally extended and refurbished to the highest of standards. The elevations both to the front and rear are most impressive with the rear showcasing the amazing vaulted master suite on the first floor. Totalling about 2466sqft of luxury living space, this property perfectly blends the character features of the original house with the new, contemporary styled extension to the rear. First class. Situated in a quiet, leafy road just moments from the bustling village centre and the beach, this magnificent home enjoys a fabulous location with a large, mature plot backing onto the common. No expense has been spared on the renovation with high end fittings, designer sanitary ware and tiling and a spectacular raised terrace with a covered area ready for an outdoor kitchen.

- FIVE BEDROOMS • THREE BATH/SHOWER ROOMS (TWO EN-SUITE) • KITCHEN/FAMILY ROOM • UTILITY ROOM • LOUNGE
- DINING AREA • SEPARATE RECEPTION • GF WC • GARAGE • GARDENS • OFF-ROAD PARKING •



The Property

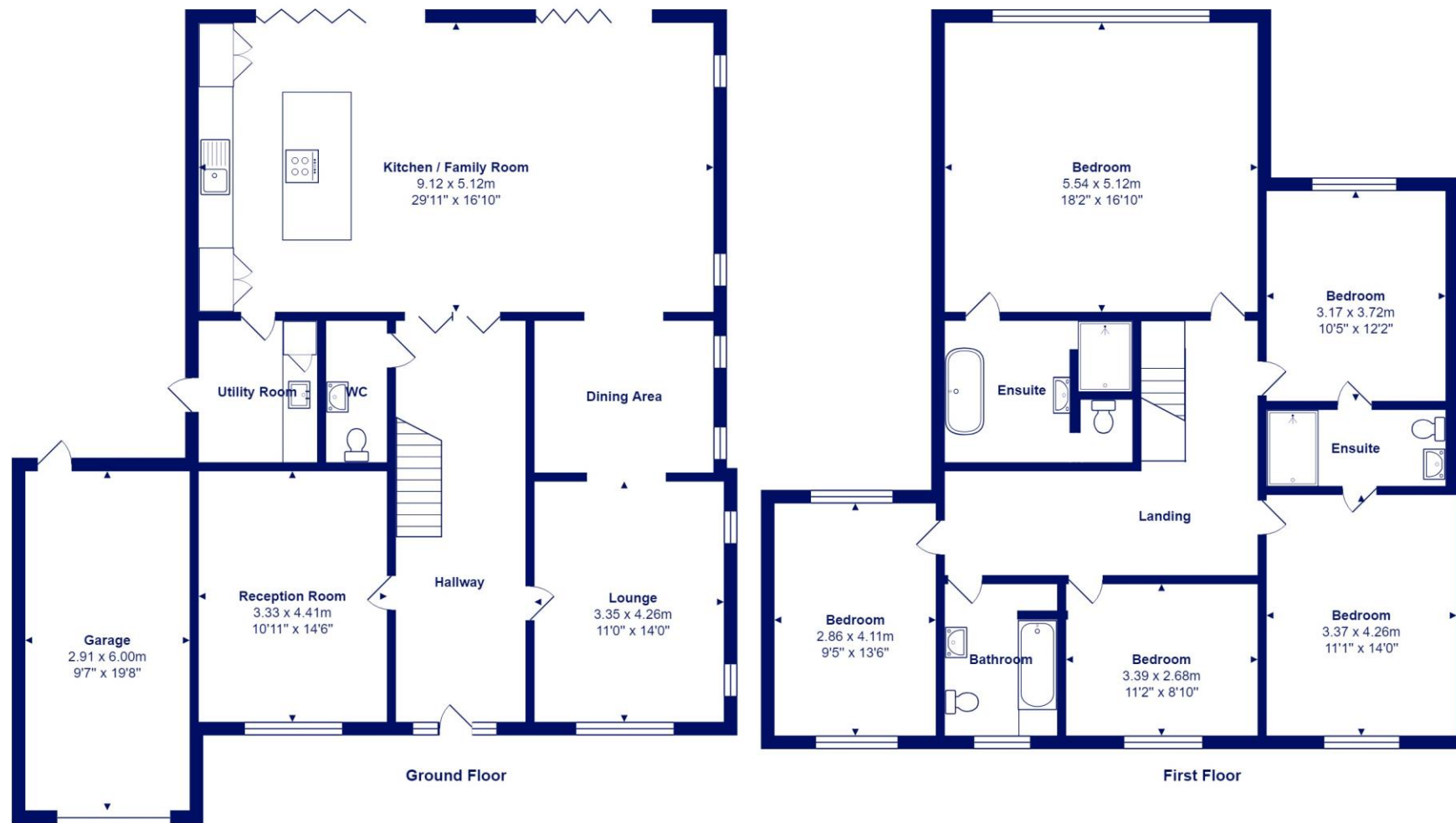
- Imposing detached residence that exudes quality and style
- Superb open plan kitchen/dining/living with two sets of aluminium bi-fold doors on to the sun deck
- Fully integrated kitchen with Corian worktops and herringbone block flooring throughout
- Lovely lounge and separate TV room
- Fantastic master suite with vaulted ceilings, huge angled windows and a sumptuous en-suite
- Four further bedrooms and two further bath/shower rooms
- Extensive outside terracing that steps down to the lower deck and then garden
- A spectacular home in show-home order- ready immediately
- Council Tax 'E' £2658.58
- EPC TBC





Location

Highcliffe is a small village in the borough of Christchurch, Dorset. The village lies on a picturesque stretch of Solent coastline with views over Christchurch Bay to the Isle of Wight. Fuelled by its enviable location, coastal walks, main line railway links to London (in under two hours) excellent schools and the popularity of the Chewton Glen Hotel, the Highcliffe Golf Course and the Nature Reserve at Steamer Point, Highcliffe is a popular area for those relocating to the coast.



Total Area: 229.1 m² ... 2466 ft² (excluding garage)

All measurements are approximate and for display purposes only







mitchells.uk.com
highcliffe@mitchells.uk.com
01425 272206

Highcliffe
284 Lymington Road
Highcliffe
BH23 5ET

