



23 Chantry Close, Highcliffe on Sea, BH23 5NQ

£535,000

Mitchells
1963 — TODAY



23 Chantry Close, Highcliffe on Sea

A stylish and immaculate, semi detached town house being the largest design on the exclusive Latimers Development. The house exudes quality with about 1600sqft of luxuriously appointed living space and has been extensively refurbished in excellent taste in recent years. A very smart example of these Georgian style townhouses. Offered for sale in true show home condition, this lovely home has had all the upgrades that you can do to these houses. The kitchen has been knocked through to the dining room creating a fabulous modern space and there is a gorgeous conservatory extension to the rear overlooking the garden. Upstairs, an en-suite shower room has been created whilst still retaining the four generous bedrooms (all with fitted wardrobes) and the garden has been beautifully landscaped with plenty of sunshine. There are also solar panels to the rear currently producing an excess of about £600 p.a. Please note there is a £505 p.a. service charge for external redecoration and the upkeep of the communal gardens which keeps the Latimers Development immaculate at all times.

- FOUR BEDROOMS • TWO BATH/SHOWER ROOMS (ONE EN-SUITE) • KITCHEN/DINER • LOUNGE • CONSERVATORY • GF WC • GARDENS • GARAGE



The Property

- Fabulous home with the 'wow' factor set in parklike gardens
- Impressive entrance with porcelain tiled floor and an oak/glass staircase
- Superb master bedroom with fitted wardrobes and luxury en-suite
- Spacious sitting room with bay window and bespoke bookshelves/TV cabinetry
- Quality open plan kitchen/dining room with a high-end kitchen cabinetry, granite worktops, Bosch appliances and porcelain tiled floor
- Gas fired central heating with underfloor heating to the hall, wc, kitchen, both bath/shower rooms and conservatory, UPVC double glazed windows
- Plantation style shutters and venetian blinds to the windows
- Colourful garden with all day sunshine, gorgeous sun terrace, casual parking and a garage nearby
- Council Tax 'E' £2658.58
- EPC 'C'

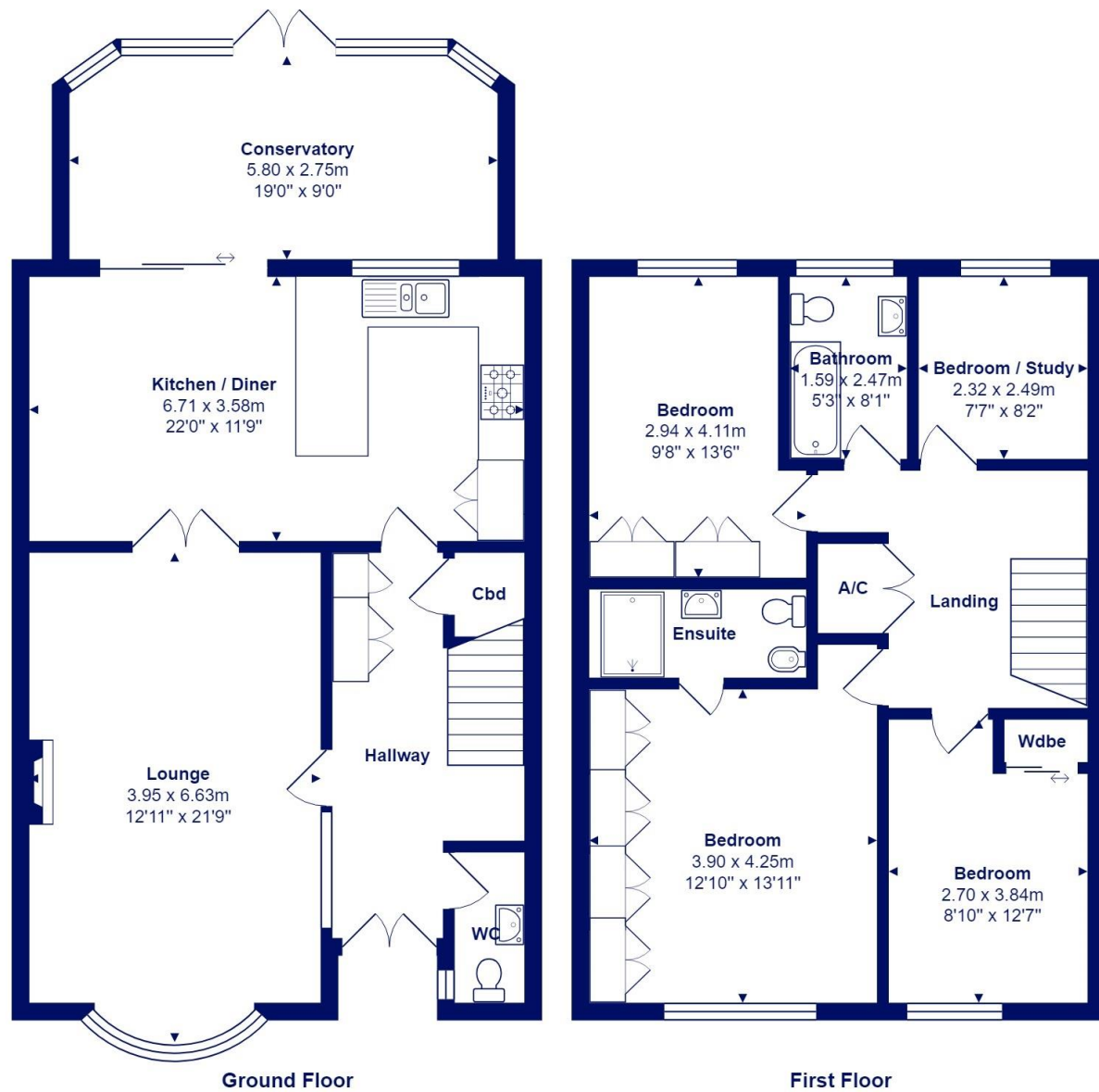




Location

Highcliffe is a small village in the borough of Christchurch, Dorset. The village lies on a picturesque stretch of Solent coastline with views over Christchurch Bay to the Isle of Wight. Fuelled by its enviable location, coastal walks, main line railway links to London (in under two hours) excellent schools and the popularity of the Chewton Glen Hotel, the Highcliffe Golf Course and the Nature Reserve at Steamer Point, Highcliffe is a popular area for those relocating to the coast.





Total Area: 148.7 m² ... 1601 ft²

All measurements are approximate and for display purposes only







mitchells.uk.com
highcliffe@mitchells.uk.com
01425 272206

Highcliffe
284 Lyminster Road
Highcliffe
BH23 5ET

