

Ground Floor
Approx. 71.1 sq. metres (764.8 sq. feet)

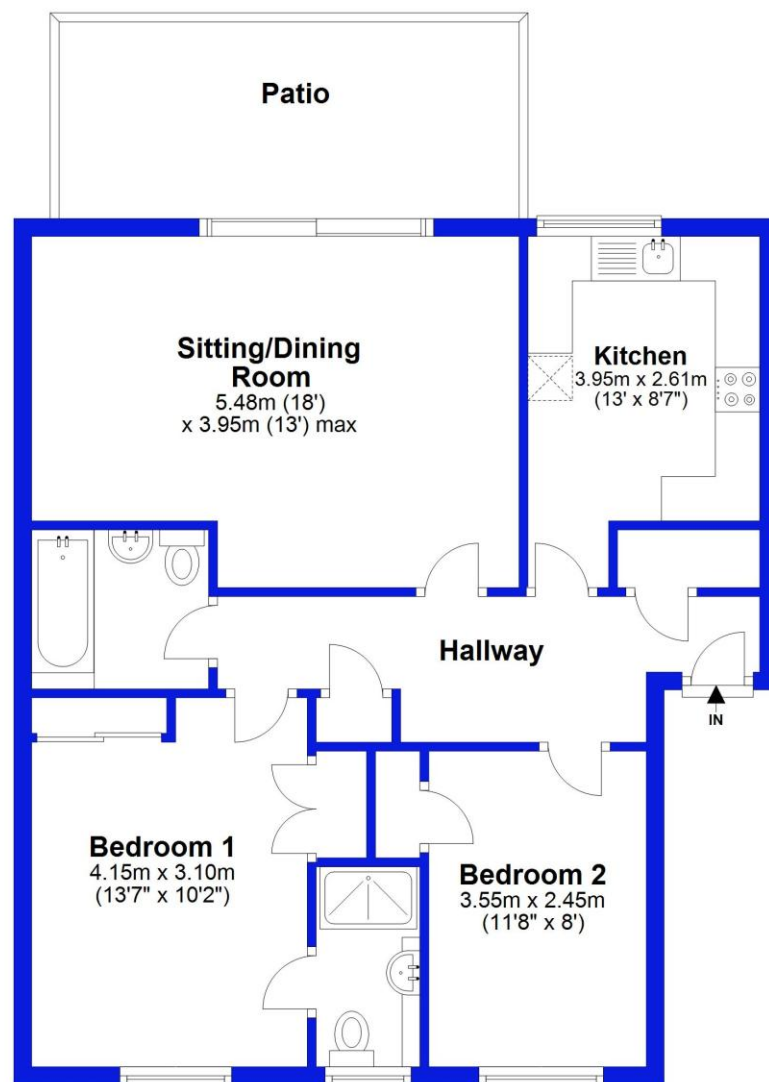


Illustration for identification purposes only; measurements are approximate, not to scale. EPC New Forest Plan produced using PlanUp.



Montagu Park, Waterford Place, Highcliffe

£325,000 Asking Price

Mitchells
1963 — TODAY

Montagu Park, Waterford Place Highcliffe On Sea, Dorset, BH23 5LG

Arguably the best position on this highly acclaimed development- a superb GROUND FLOOR APARTMENT with DIRECT ACCESS TO SOUTH FACING GARDENS, approx. 800 sq ft of accommodation and in first class condition throughout.

Offered with a SHARE IN THE FREEHOLD this lovely apartment has the most beautiful outlook and is just a short stroll to the shops and the beach.

- Purpose built ground floor apartment
- Excellent condition with modern fittings throughout
- Two double bedrooms, both with fitted wardrobes
- Two bath/shower rooms
- South facing sitting/dining room with patio doors onto the gardens
- Gas fired central heating and UPVC double glazing
- Garage adjoining the apartment with LIGHT AND POWER, casual parking
- Shared freehold, balance of 999 year lease, service charge £780 per half year
- Wonderful quiet position- an excellent proposition
- Council Tax 'C' £2,033.59
- EPC 'D'

