



THE GROVE, CHRISTCHURCH, DORSET BH23 2EZ

Mitchells
1963 — TODAY



The Grove, Christchurch, Dorset BH23 2EZ

A lovely, detached house of quite some style and quality, offering light and airy accommodation of about 2000 sq ft and all presented in excellent condition. The house features spacious room sizes with very smart, open plan living space and a superb conservatory/garden room whilst all the bedrooms upstairs are comfortable doubles. No forward chain. This super property has been lovingly cared for and been a great family home for many years. It is situated in a very convenient location in West Christchurch and within the popular schools catchment area with a delightful rear garden and plenty of off road parking.

FIVE BEDROOMS • TWO BATH/SHOWER ROOMS (ONE EN-SUITE) • KITCHEN/DINER

SEPARATE LOUNGE • CONSERVATORY

GAMES ROOM/STUDY • UTILITY ROOM • GARDEN

DRIVEWAY PARKING FOR AT LEAST FIVE CARS



The Property

- Characterful detached house in first class condition with stylish fittings and large rooms
- Impressive entrance hall and galleried landing
- Fabulous open plan living space with distinct 'zones', brilliant conservatory overlooking the garden
- Separate lounge which can be shut off with two sets of doors
- Master bedroom with en-suite, four further bedrooms and two further bath/shower rooms (one ground floor bedroom and bathroom)
- Wonderful rear garden with high degree of privacy and plenty of sunshine
- Deep driveway providing parking for at least five cars
- No forward chain
- Council Tax Band 'E' - £2,710.86
- EPC rating 'D'

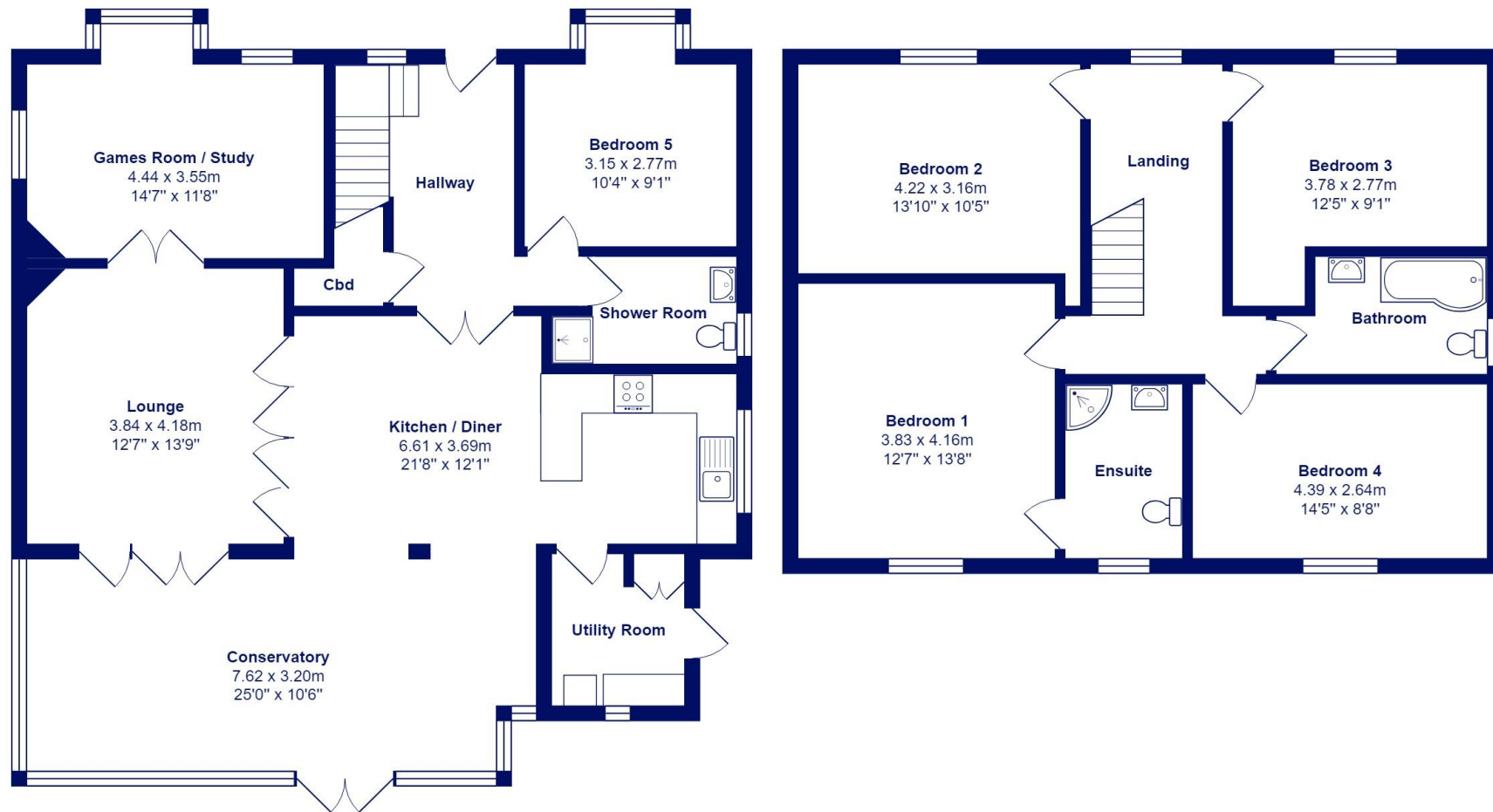




Location

Christchurch is a beautiful, vibrant and historic town with its 11th century priory, quay/harbour, ancient castle ruins and various shops, cafes, restaurants and bars. The Town is well served for transport links with a main line railway station to London/Waterloo being just under 2 hours and Bournemouth International Airport about 5 miles distant. Excellent infant, junior and senior schools are also within easy reach as is the stunning the New Forest National Park.





Total Area: 185.2 m² ... 1994 ft²

All measurements are approximate and for display purposes only





mitchells.uk.com
mudford@mitchells.uk.com
01202 499295

Mudford
Cambridge House
112-114 Stanpit
BH23 3ND

