



HYDE MEWS, CHRISTCHURCH, DORSET BH23 2FF

Mitchells
1963 — TODAY



Hyde Mews, Christchurch, Dorset BH23 2FF

A very smart house of about 890 sq ft, built in 2018 to an exacting specification and featuring a stylish internal finish with quality fittings. Conveniently located within easy reach of Christchurch town centre the house also has the benefit of the remaining new home warranty. Hyde Mews is set just off Clarendon Road on the outskirts of the town centre with all the superb amenities that this area has to offer being right on your doorstep. The mainline train station of Christchurch is just a short stroll away and the house also falls in to the catchment area of the popular local schools.

THREE BEDROOMS • TWO BATH/SHOWER ROOMS (ONE EN-SUITE) • KITCHEN/BREAKFAST ROOM

LOUNGE/DINER • DOWNSTAIRS WC

GARDEN • OFF ROAD PARKING

** Video Tour available online **



The Property

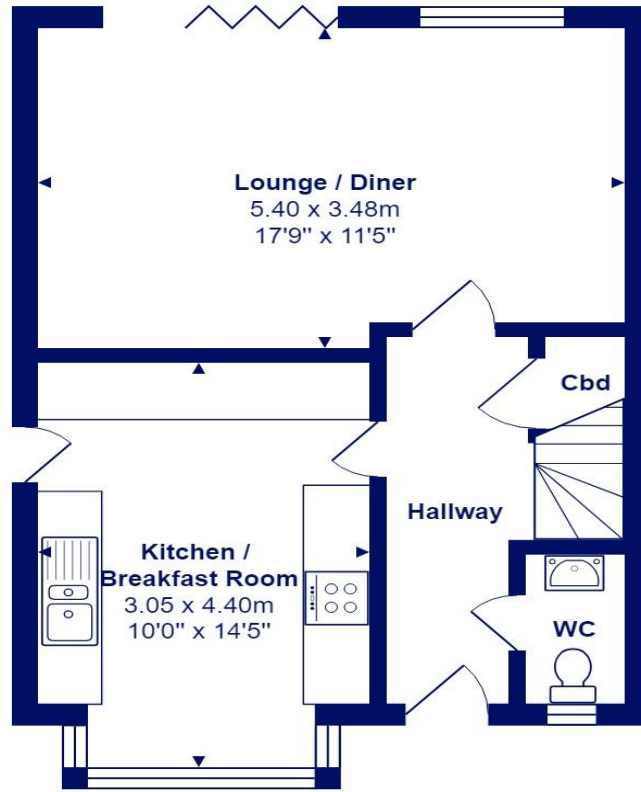
- Immaculate semi-detached house of about 890 sq ft
- Spacious master bedroom with en-suite shower room
- Two further bedrooms with a full family bathroom
- Designer sanitary ware and tiling
- Contemporary kitchen/dining room with wood effect vinyl floor and some Integrated appliances
- Separate lounge with access to the garden
- Private, off road parking on the block paved driveway
- Lovely garden with patio, lawn and garden shed
- Council Tax Band 'D' - £ 2,217.98
- EPC rating 'B'



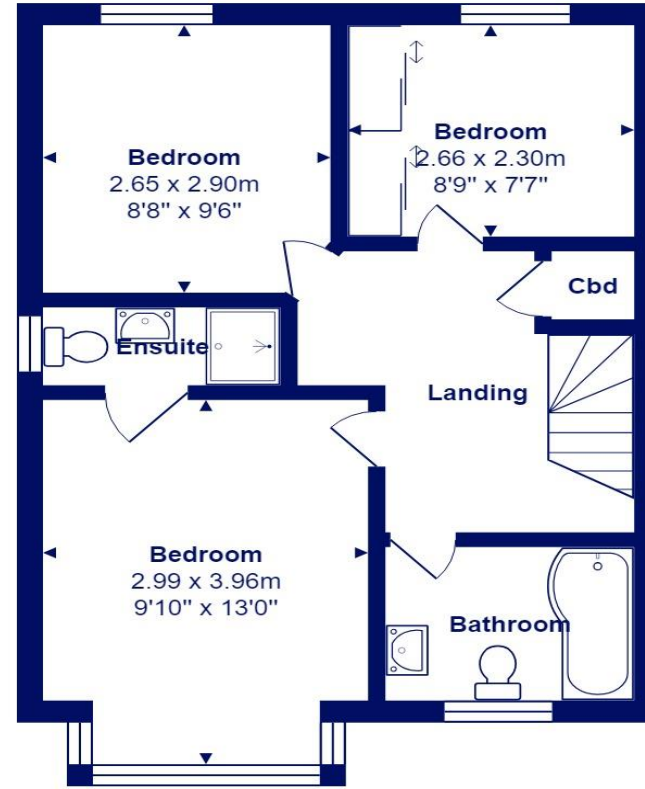


Location

Christchurch is a beautiful, vibrant and historic town with its 11th century priory, quay/harbour, ancient castle ruins and various shops, cafes, restaurants and bars. The Town is well served for transport links with a main line railway station to London/Waterloo being just under 2 hours and Bournemouth International Airport about 5 miles distant. Excellent infant, junior and senior schools are also within easy reach as is the stunning the New Forest National Park.



Ground Floor



First Floor



Total Area: 82.6 m² ... 889 ft²

All measurements are approximate and for display purposes only







mitchells.uk.com

mundeford@mitchells.uk.com

01202 499295

Mundeford

Cambridge House

112-114 Stanpit

BH23 3ND

