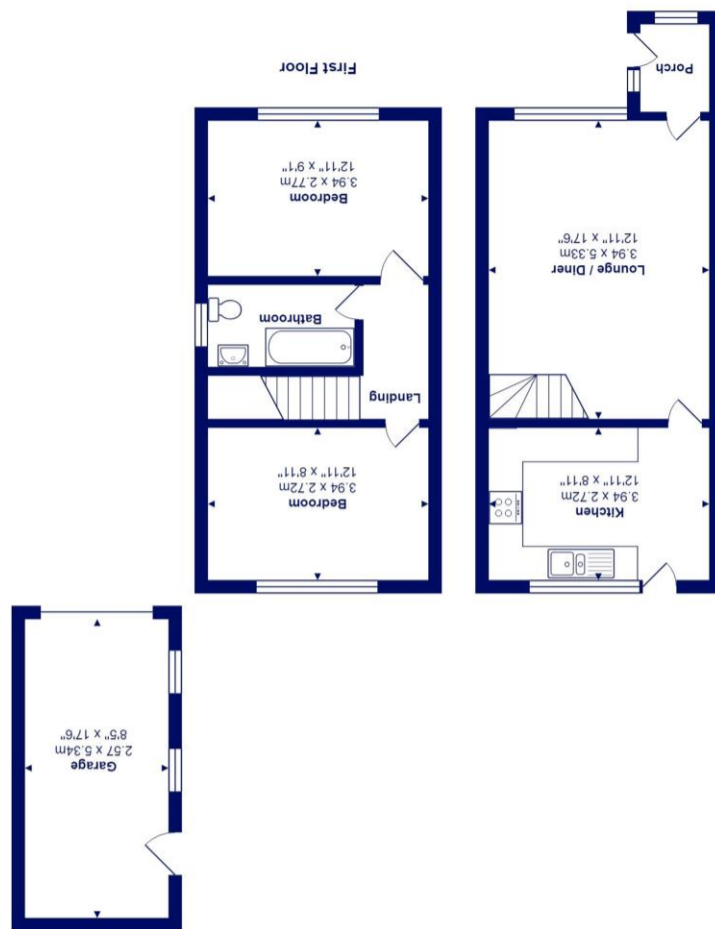




All measurements are approximate and for display purposes only.
Total Area: 66.8 m² ... 719 ft² (excluding garage)



Ground Floor



Nelson Drive, Christchurch

£325,000 Asking Price

Mitchells
1963 — TODAY

Nelson Drive Christchurch, Dorset, BH23 3SA

A delightful semi-detached, two bedroom property situated in the heart of Mundeford with driveway parking, garage and a private rear garden. Presented in good order throughout this home is offered for sale with vacant possession. Located within the catchment area of the local sought after schools, local shops, bus routes and within walking distance of Mundeford Quay and Avon Beach.

- Semi-detached house with 720 sq.ft. of accommodation
- Two first floor double bedrooms
- Sitting/dining room with outlook to the front
- Good sized kitchen with access to the garden
- uPVC double glazing & gas fired central heating
- Modern family bathroom
- Private rear garden
- Single garage and car port
- Close to local shops, bus routes and within catchment area of local schools
- Council Tax Band 'C' - £1971.54
- EPC rating 'D'

