



27 Hinton Wood Avenue, Highcliffe on Sea, BH23 5AB GP £849,950

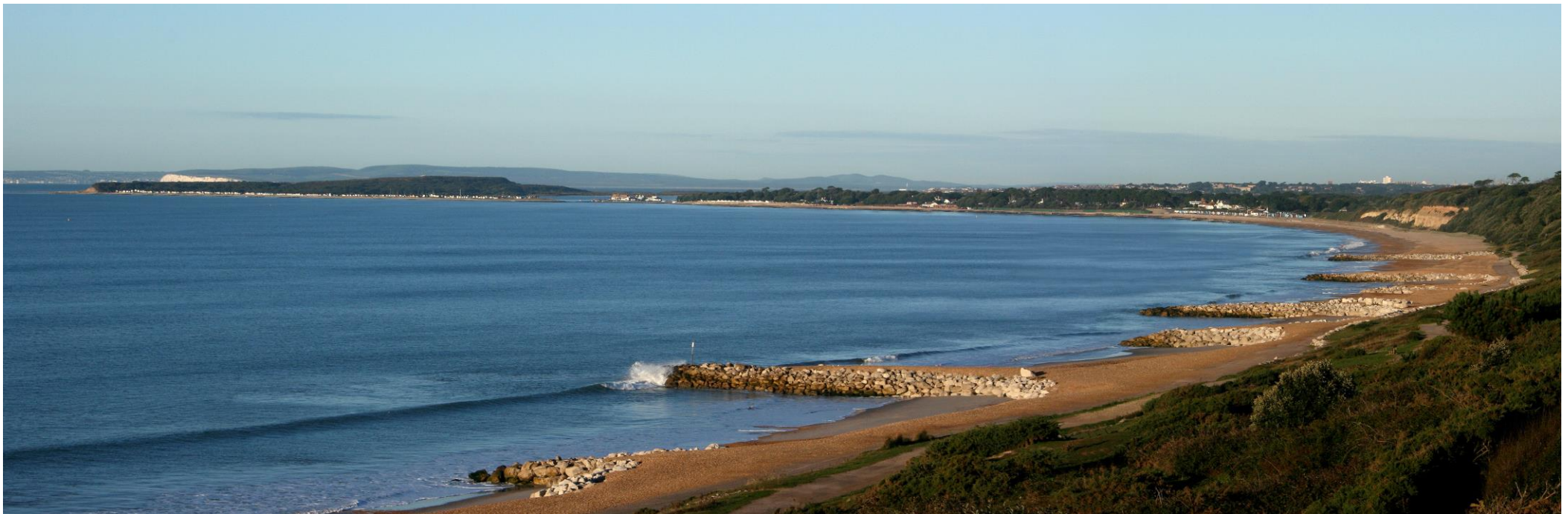
Mitchells
1963 — TODAY



Hinton Wood Avenue, Highcliffe on Sea

A striking detached house of about 2000 sqft in this prestigious location and standing on a very large mature plot and just a short stroll to the bustling village centre and the beach. The house has been well modernised and features generous living accommodation, excellent bedroom space, double garaging and a very useful studio/home office. Hinton Wood Avenue is a very smart address with some of Highcliffe's best properties and is known for the large plots and treelined frontages. The house enjoys a generous frontage with plenty of parking and has a superb sun deck across the back that overlooks the rear garden.

- FOUR/FIVE BEDROOMS • TWO BATH/SHOWER ROOMS (ONE EN-SUITE) • KITCHEN/DINING ROOM • SITTING ROOM • FAMILY ROOM • LARGE ENTRANCE HALL • GYM/OFFICE • GF WC • GARAGE/WORKSHOP • OFF-ROAD PARKING • GARDEN •



The Property

- Excellent family home in very good order
- Four/five double bedrooms (one ground floor)
- Two refitted bath/shower rooms with quality sanitary ware and tiling
- Spacious reception hall and sitting room
- Full width, kitchen/dining/family room leading to the sun deck
- Gas fired central heating, anthracite UPVC double glazing
- Covered hot tub and mature gardens
- First class location within easy reach of all local amenities and the mainline train station
- Council Tax 'G' £3625.36
- EPC 'C'

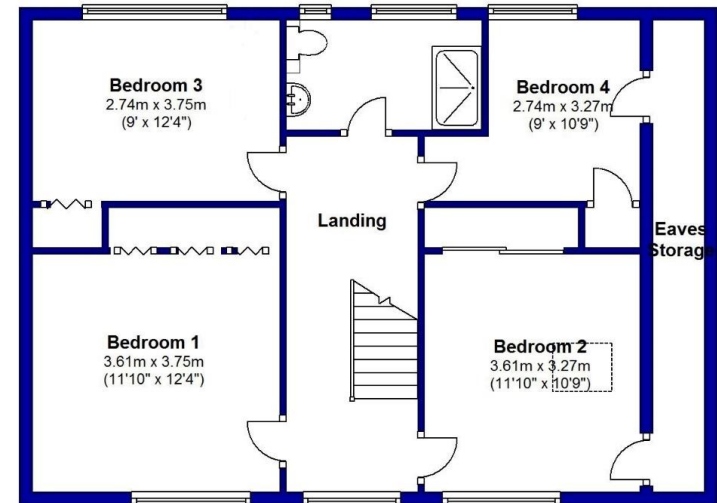
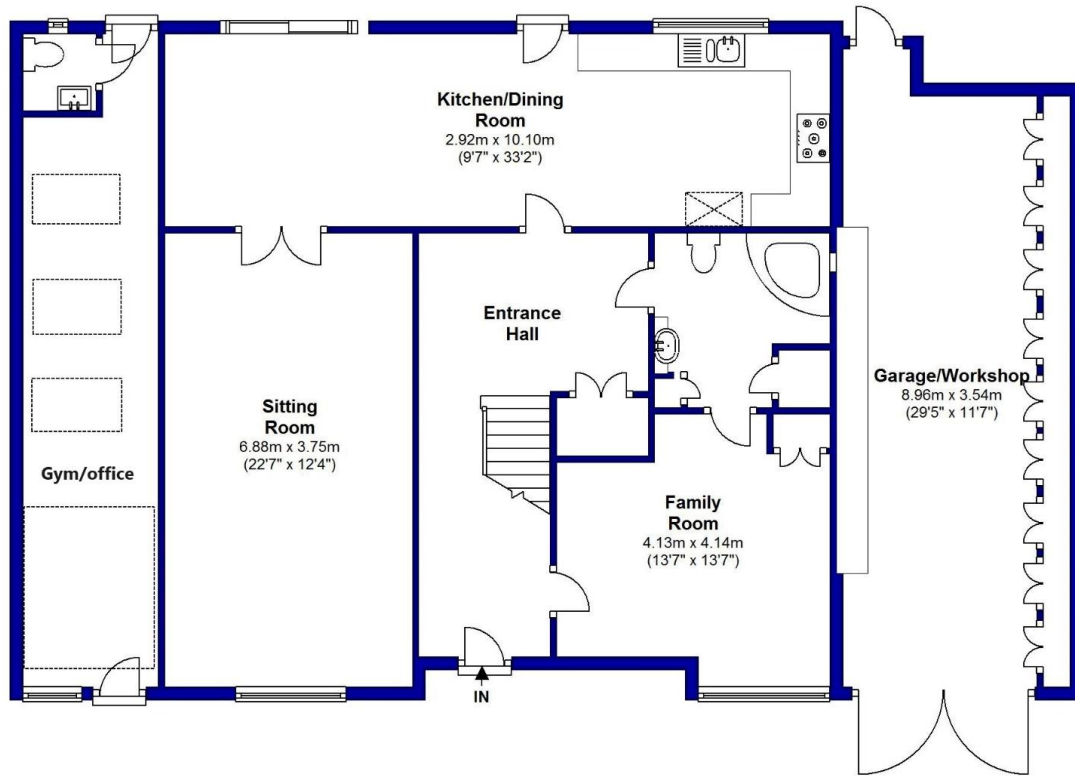




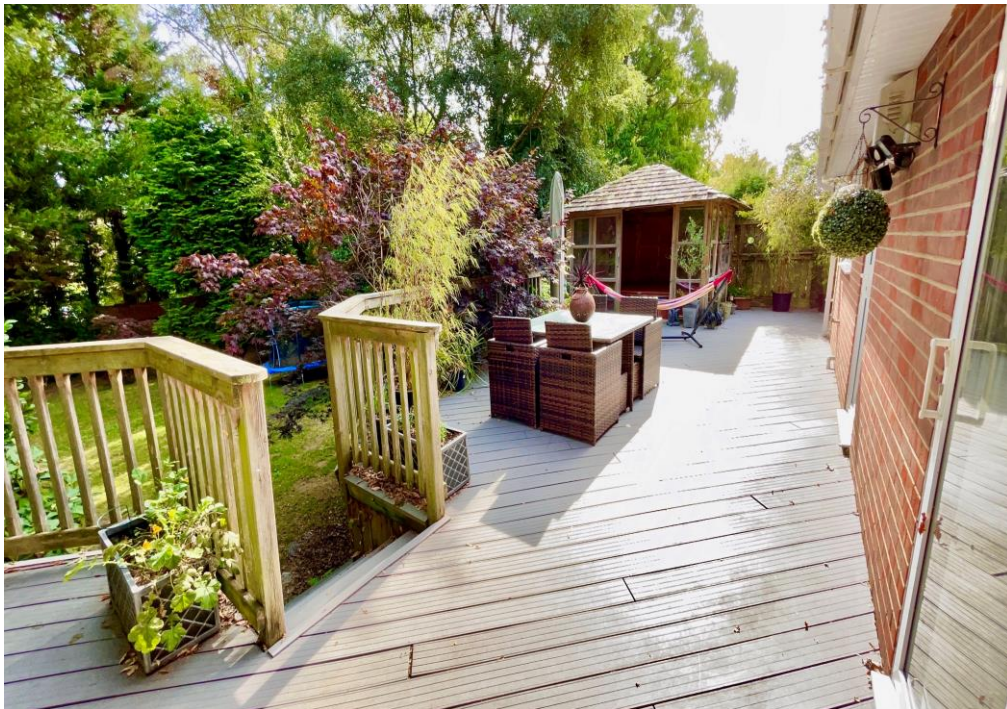
Location

Highcliffe is a small village in the borough of Christchurch, Dorset. The village lies on a picturesque stretch of Solent coastline with views over Christchurch Bay to the Isle of Wight. Fuelled by its enviable location, coastal walks, main line railway links to London (in under two hours) excellent schools and the popularity of the Chewton Glen Hotel, the Highcliffe Golf Course and the Nature Reserve at Steamer Point, Highcliffe is a popular area for those relocating to the coast.





Total approx internal floor area (excluding garage & hot tub): 185 sqm/1991.3 sqft





mitchells.uk.com
highcliffe@mitchells.uk.com
01425 272206

Highcliffe
284 Lymington Road
Highcliffe
BH23 5ET

