



38 Hinton Wood Avenue, Highcliffe on Sea, BH23 5AH £1,100,000

Mitchells
1963 — TODAY



Hinton Wood Avenue, Highcliffe on Sea

An imposing property on one of Highcliffe's premier roads, offering spacious living accommodation approaching 2600sqft. Four good sized double first floor bedrooms and two bathrooms, with the master benefitting from a dressing area and en-suite. Set on a large plot with good sized private frontage and secluded rear west facing rear garden. Located just moments from the bustling village centre, cliff top and local beaches.

- FOUR BEDROOMS • TWO BATH/SHOWER ROOMS (ONE EN-SUITE) • DRESSING ROOM • KITCHEN/DINER • UTILITY ROOM • GF WC • LOUNGE • FAMILY ROOM • GARDEN ROOM • GARAGE & STORE • GARDENS • OFF-ROAD PARKING •



The Property

- Four/Five bedrooms some with built-in wardrobes
- Separate dressing room
- Two bath/shower rooms (one en-suite)
- A good size family kitchen/dining room with integrated appliances
- Separate sitting room with feature open fireplace
- A lovely large family/orangery extension with sliding doors onto the garden
- Utility room & walk-in pantry
- Ground cloakroom
- Gas fired central heating & Upvc double glazing
- Large sunny west facing plot with the property being set back from the road with a private, well established rear garden and useful garden room
- Single integral garage and storage to the side
- Short walk to the main high street with the cliff top and beach being a little further on
- Mainline railway stations are found nearby at Hinton Admiral and New Milton with services to London Waterloo in two hours
- Council Tax 'G' £3813.00
- EPC 'C'

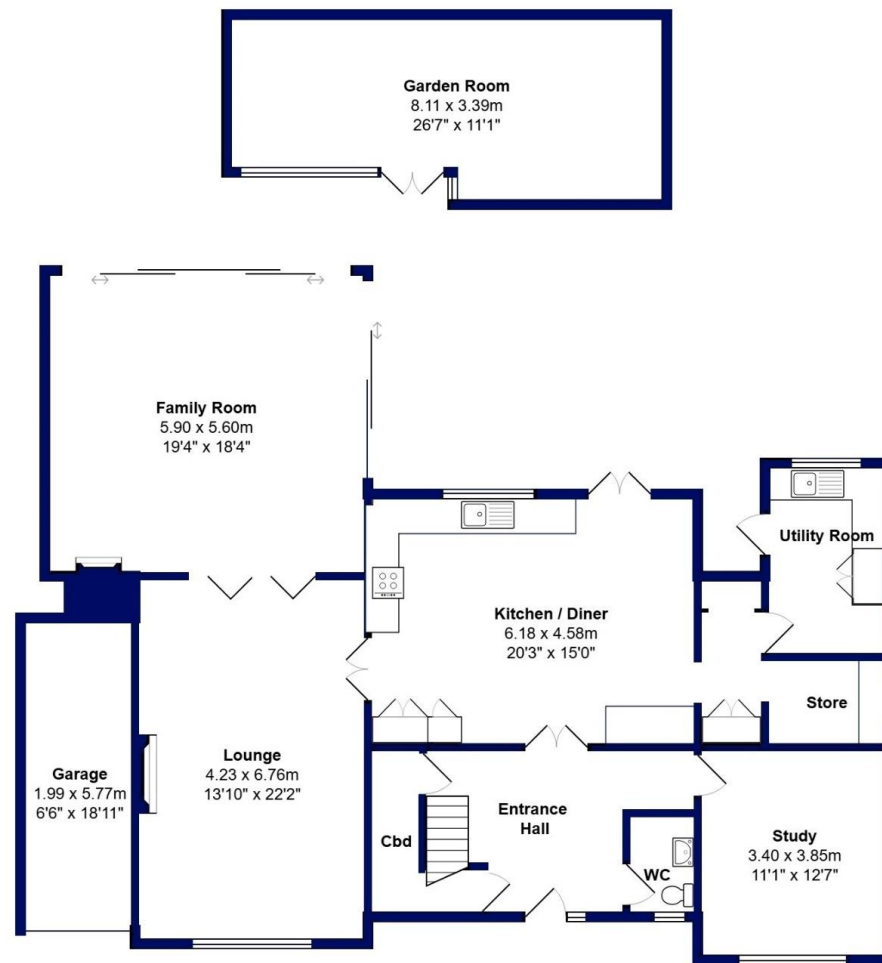




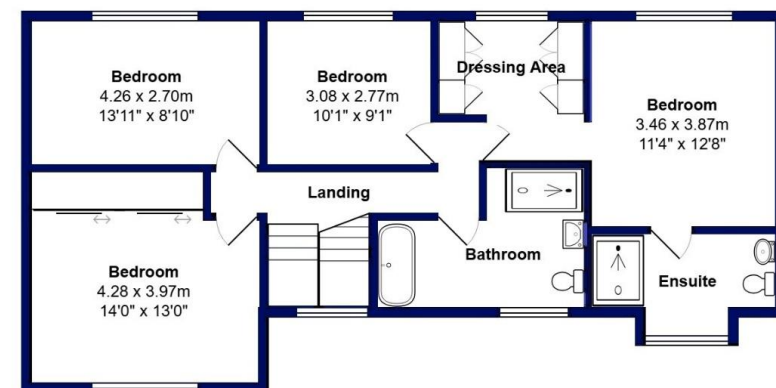
Location

Highcliffe is a small village in the borough of Christchurch, Dorset. The village lies on a picturesque stretch of Solent coastline with views over Christchurch Bay to the Isle of Wight. Fuelled by its enviable location, coastal walks, main line railway links to London (in under two hours) excellent schools and the popularity of the Chewton Glen Hotel, the Highcliffe Golf Course and the Nature Reserve at Steamer Point, Highcliffe is a popular area for those relocating to the coast.





Ground Floor



First Floor



Total Area: 240.0 m² ... 2583 ft²
All measurements are approximate and for display purposes only







mitchells.uk.com
highcliffe@mitchells.uk.com
01425 272206

Highcliffe on Sea
284 Lymington Road
Highcliffe on Sea
BH23 4TH

