

PAUNTLEY ROAD MUDEFORD, BH23 3JW

CGI Image of proposed development



MITCHELLS
ESTATE AGENTS

Image of a previous development



PAUNTLEY ROAD, MUDEFORD, BH23 3JW

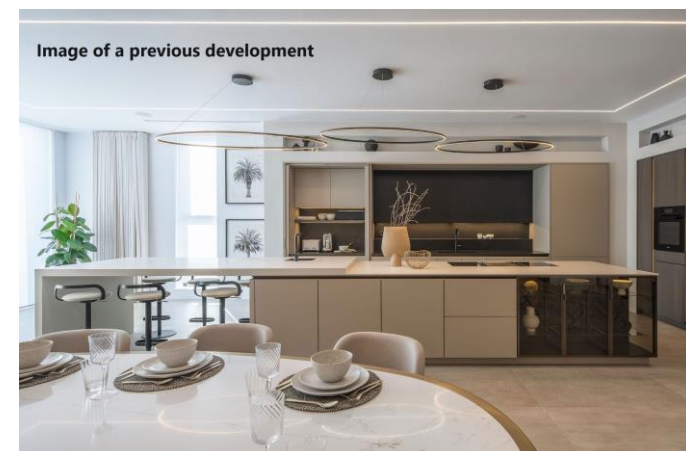
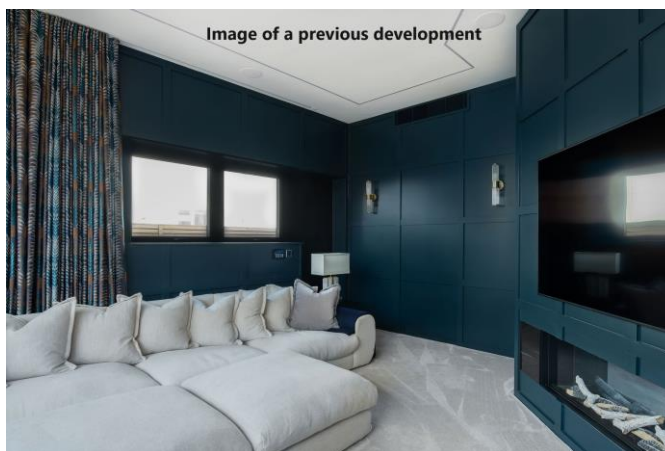
NEW BUILD - substantial detached chalet of 2283 sq ft, on a superb corner plot with views over the cricket pitch situated in this superb pocket of Mundeford, moments from Avon Beach and Mundeford Quay.

FOUR BEDROOMS & STUDY/5th BEDROOM • THREE BATH/SOWER ROOMS • OPEN PLAN LIVING SPACE
SNUG • GARDEN • SUN TERRACE • GARAGE • ELECTRIC GATES
OFF ROAD PARKING



The Property

- Substantial detached chalet in sought after location
- Spacious rooms with quality floor coverings
- Double height grand entrance hallway
- Stylish, open plan kitchen/living room
- Three designer bath/shower rooms with luxurious ceramics
- Bespoke walk in wardrobes
- New gas fired central heating, aluminum double glazing, internal doors and wiring
- Short stroll to the beach, local shops and award winning pubs and restaurants.
- Landscaped garden with sun terrace overlooking the cricket pitch
- Driveway parking for several cars
- 10 year NHBC warranty/build completion date Autumn 2024
- Site visit on request/visit previous developments
- Council Tax Band tbc
- EPC rating tbc



CGI image of a previous development



Image of a previous development

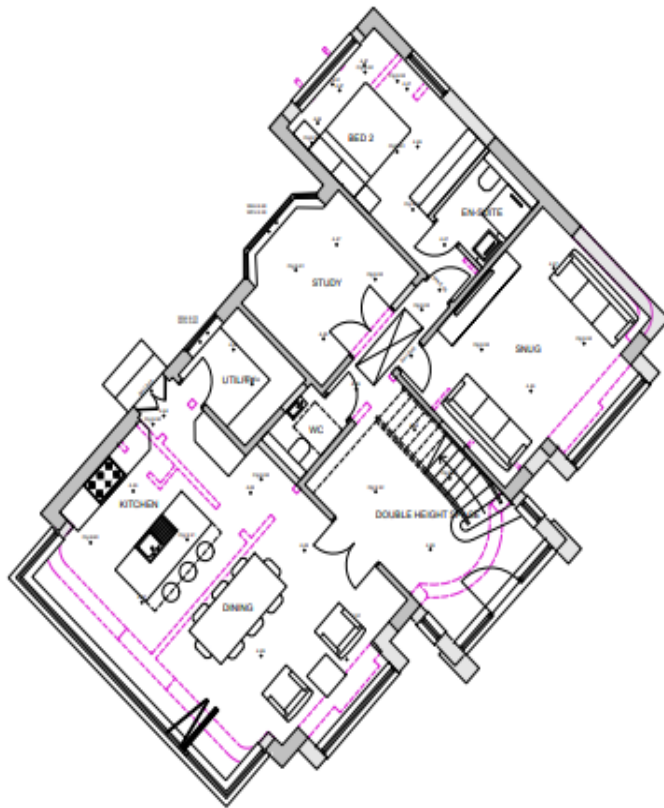


Image of a previous development

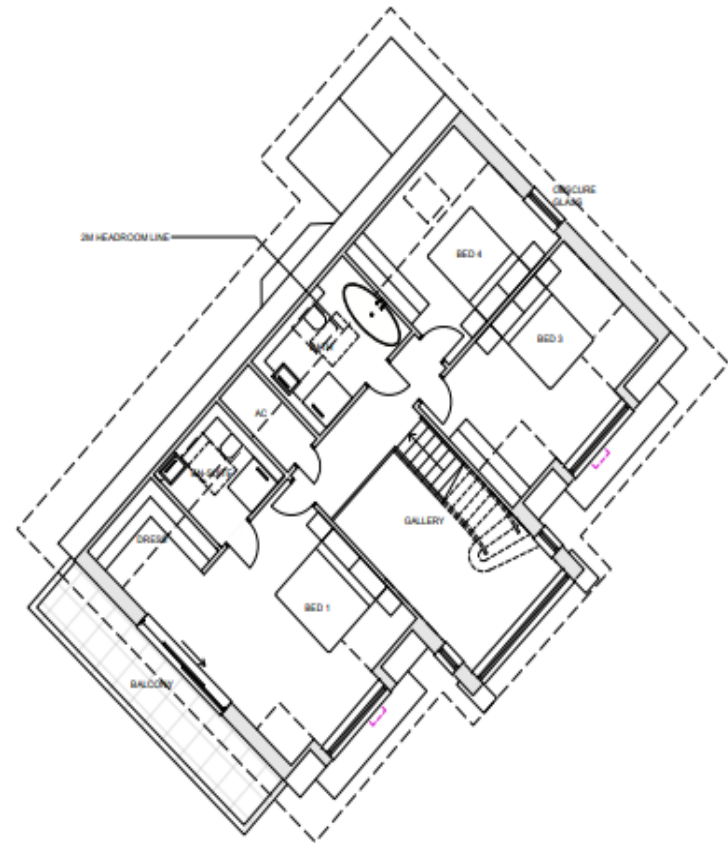


Location

Mudford began as a small fishing village close to the entrance of Christchurch Harbour which still sees fishing boats landing their catch today. The area enjoys award winning sandy beaches at Avon beach and plenty of wildlife activity on Hengistbury Head and Stanpit Marsh Nature Reserve. The popular Mudford Sandbank attracts visitors every year to the private beach huts with the Harbour providing a sheltered environment for watersports activities. With a friendly, community feel, it is no wonder Mudford is becoming a popular choice for relocation.



GROUND FLOOR PLAN:
SCALE: 1:100



FIRST FLOOR PLAN:
SCALE: 1:100

Image of a previous development



Image of a previous development



Image of a previous development



Image of a previous development



CGI image of proposed development



Cambridge House, 112-114 Stanpit, Christchurch, Dorset BH23 3ND

mudeford@mitchells-estateagents.co.uk

01202 499295

mitchells.uk.com