

Total Area: 115.8 m² ... 1246 ft²
 All measurements are approximate and for display purposes only

Mitchells
 1963 — TODAY



Oakleigh Way, Highcliffe On Sea, BH23 5DQ

Asking Price: £585,000

Freehold

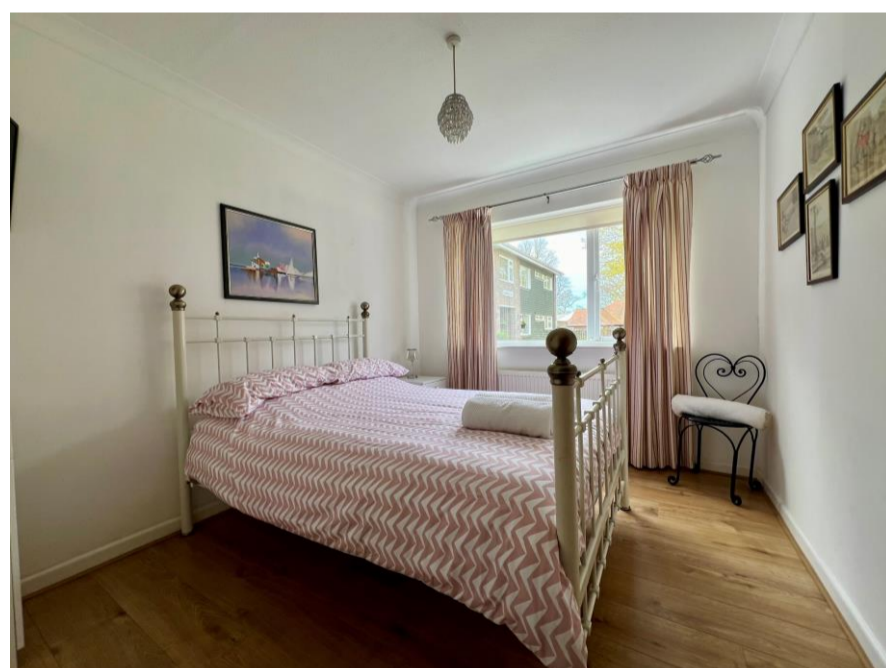
A stylish detached bungalow in a brilliant location, south side of the main Lymington Road and just moments from the cliff top, foot path to the beach and the main village centre. The property enjoys lovely bright living space of about 1250sqft with modern fittings throughout and also has a delightful, south facing garden. Bungalows in this location are rarely available with all the elements that make this coastal position so special, being right on the doorstep. The living space is deceptively spacious with three double bedrooms and three bath/shower rooms with a gorgeous sitting/dining room that leads onto the garden. The property is currently being used for holiday letting (very successfully) and is offered for sale with no forward chain.

Accommodation & Amenities

- Quality detached bungalow in a fantastic location right by the beach
- Comprehensively refurbished inside and out with quality fittings in the kitchen and all three bathrooms
- Lovely entrance porch/conservatory that really sets the property off when you walk in
- Bright, airy room sizes with generous bedroom space
- Smart bath/shower rooms (one en suite)
- Gas fired heating, UPVC double glazed windows and low maintenance gardens
- Off road parking and extremely private/sunny rear garden
- The main footpath on Beacon Drive is literally just around the corner giving access to cliff top walks, breathtaking views and easy access to the beach
- Immaculate inside and out with possession available from the end of the summer 2024
- Council Tax 'E' £2531.29
- EPC 'E'



284 Lymington Road, Highcliffe, Christchurch, BH23 5ET | highcliffe@mitchells.uk.com | 01425 272206 | <https://mitchells.uk.com>



284 Lymington Road, Highcliffe, Christchurch, BH23 5ET | highcliffe@mitchells.uk.com | 01425 272206 | <https://mitchells.uk.com>