



3 Bure Brook Mews, Highcliffe on Sea, BH23 4HP

£450,000

Mitchells
1963 — TODAY



Hoburne Lane, Highcliffe on Sea

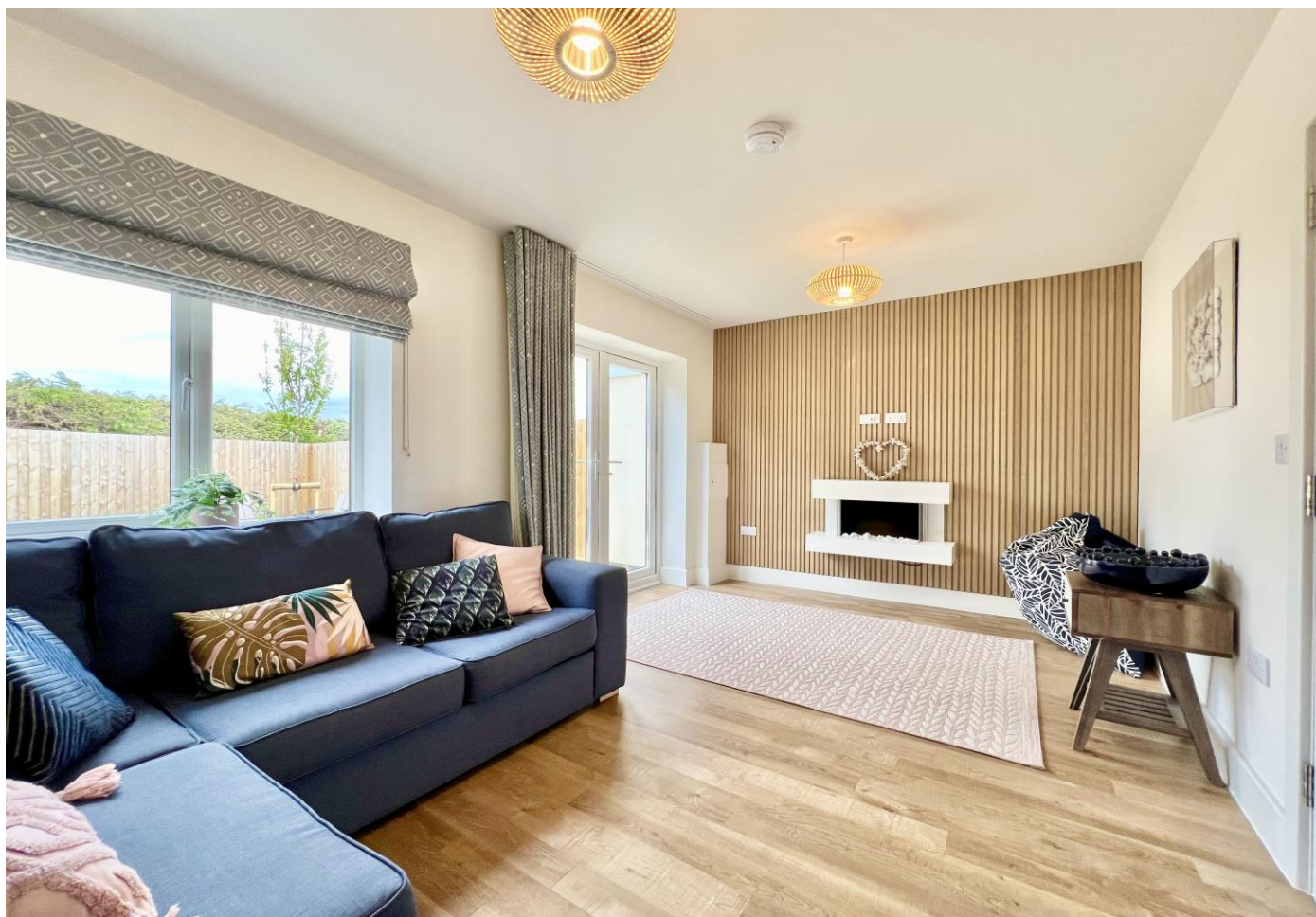
A stylish detached house of about 945sqft, built by Hoburne and situated in a great location within the Highcliffe Schools catchment and within a short walk of Friars Cliff Beach. Offered for sale with a 10 year structural warranty and finished to an outstanding specification with a lovely garden, this house is ready for immediate occupation. Bure Brook Mews is a select development of just 9 superb homes, built by Hoburne Developments just over a year ago. This quality scheme has been finished in a cool, coastal style with superb internal finishes, fully landscaped gardens and allocated, off road parking. The kitchens are fully integrated and finished in a contemporary style with quartz worktops with the bathrooms featuring designer sanitary ware and attractive tiling.

- **THREE BEDROOMS • TWO BATH/SHOWER ROOMS (ONE EN-SUITE) • KITCHEN/DINER • LOUNGE • GF WC •**
- OFF-ROAD PARKING • GARDENS •**



The Property

- Three bedrooms with a luxury en-suite shower room
- Generous open plan, family sized kitchen/dining room
- Separate lounge with access onto the garden
- Ground floor cloakroom
- Quality hard flooring and carpets included with flat plastered ceilings and LED lighting
- Gas fired central heating, UPVC windows
- Large sandstone terrace and newly lawned garden with built-in BBQ
- Off road parking for two cars
- Council Tax TBC
- EPC 'B'
- Please note that these houses can be sold with the in-situ furniture (at a separate negotiation) making this a perfect opportunity for someone looking to buy for investment/letting/holiday letting purposes)

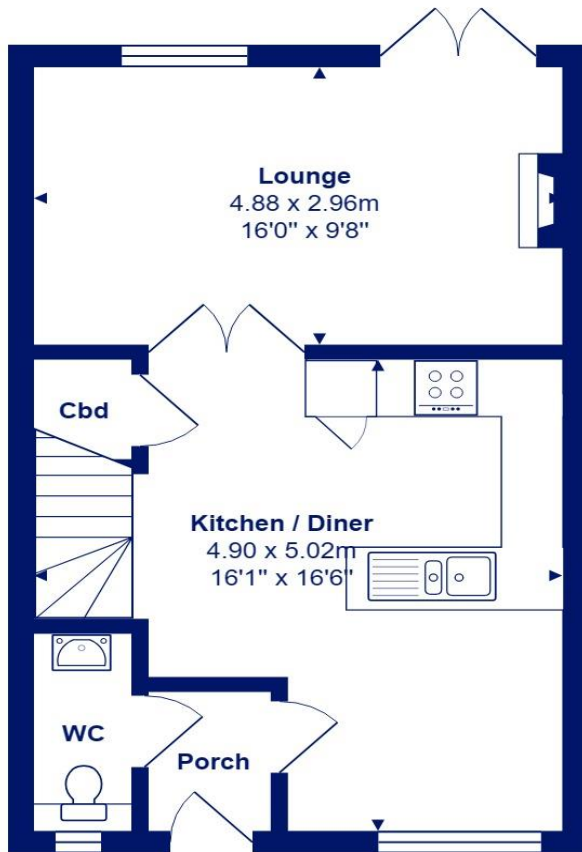




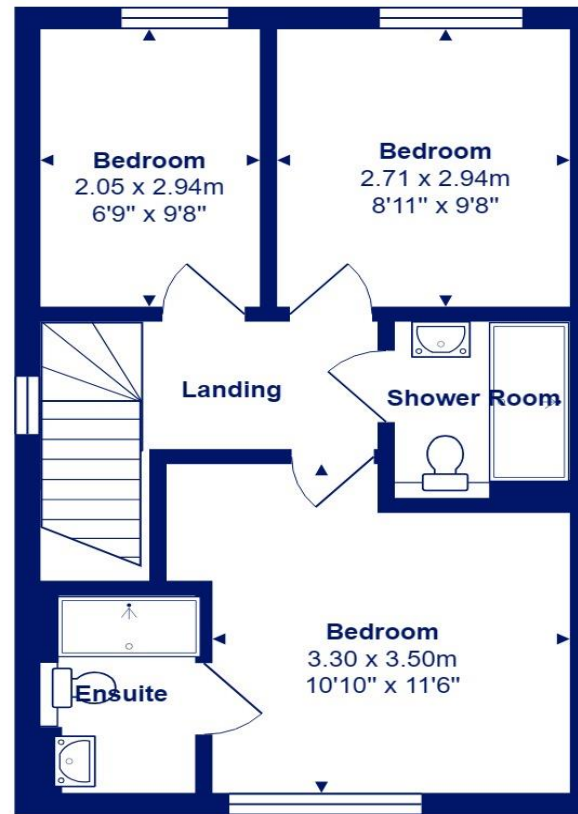
Location

Highcliffe is a small village in the borough of Christchurch, Dorset. The village lies on a picturesque stretch of Solent coastline with views over Christchurch Bay to the Isle of Wight. Fuelled by its enviable location, coastal walks, main line railway links to London (in under two hours) excellent schools and the popularity of the Chewton Glen Hotel, the Highcliffe Golf Course and the Nature Reserve at Steamer Point, Highcliffe is a popular area for those relocating to the coast.





Ground Floor



First Floor



Total Area: 79.6 m² ... 856 ft²

All measurements are approximate and for display purposes only







mitchells.uk.com
highcliffe@mitchells.uk.com
01425 272206

Highcliffe
284 Lymington Road
Highcliffe
BH23 5ET

