

BURE HAVEN DRIVE
MUDEFORD, BH23 4BS





Guide Price £1,000,000 FREEHOLD

A simply stunning “as new” five bedroom four bath / shower room (three ensuite) detached chalet of just over 1800 sq ft in this highly sort after location. The accommodation is versatile with two ground floor bedrooms off the spacious hall which also leads to the fabulous, large open plan living area with a high quality kitchen and separate utility room. On the first floor the master bedroom suite is particularly impressive and bedroom five would make an ideal study, if needed. The property stands on a due south facing plot with a large full width patio. To the front is plenty of parking in addition to the garage.

**FIVE BEDROOMS • FOUR BATH/SHOWER ROOMS (THREE EN-SUITE) • KITCHEN/LOUNGE/DINER •
UTILITY ROOM • SOUTH FACING GARDEN • GARAGE • OFF ROAD PARKING**



The Property

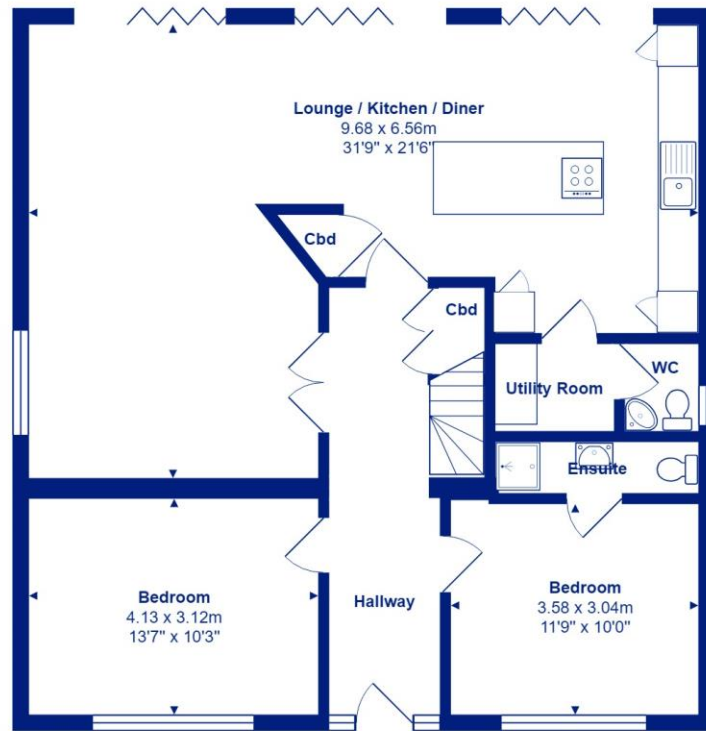
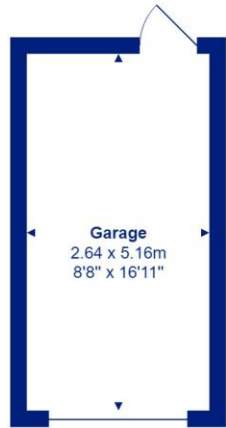
- Just a short stroll to Friars Cliff Beach
- Almost a brand new build
- Three sets of bi-fold doors to patio and garden
- Fantastic large kitchen area with island unit/breakfast bar
- Integrated appliances with the latest extractor
- Stylish high quality oak flooring in living areas and hall
- Externally, designed for minimal maintenance
- Ready for immediate occupation
- Very smart location on the Mudeford/Friars Cliff border
- Council Tax Band tbc
- EPC rating 'C'



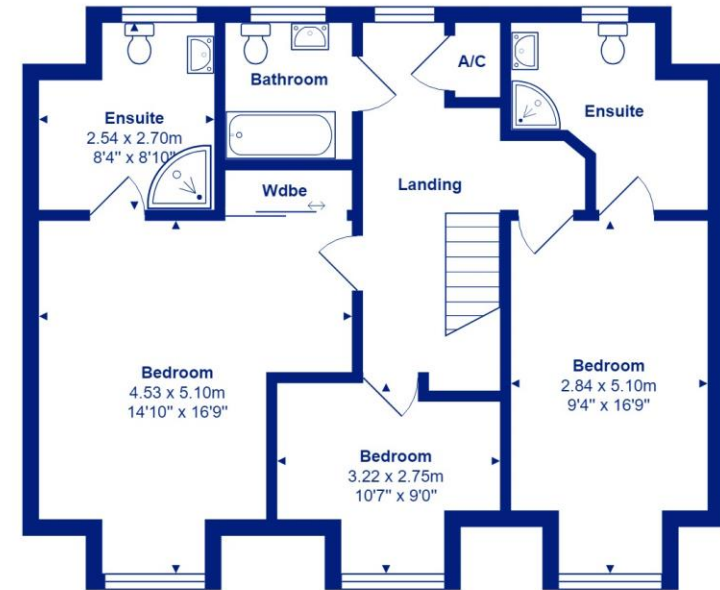


Location

Mundeford began as a small fishing village close to the entrance of Christchurch Harbour which still sees fishing boats landing their catch today. The area enjoys award winning sandy beaches at Avon beach and plenty of wildlife activity on Hengistbury Head and Stanpit Marsh Nature Reserve. The popular Mundeford Sandbank attracts visitors every year to the private beach huts with the Harbour providing a sheltered environment for watersports activities. With a friendly, community feel, it is no wonder Mundeford is becoming a popular choice for relocation.



Ground Floor



First Floor



Total Area: 167.8 m² ... 1806 ft² (excluding garage)

All measurements are approximate and for display purposes only





Cambridge House, 112-114 Stanpit, Christchurch, Dorset BH23 3ND mudford@mitchells-estateagents.co.uk

01202 499295
mitchells.uk.com