



7B Whitefield Road, New Milton, BH25 6DE

£145,000

Mitchells
1963 — TODAY



*7B Whitefield Road
New Milton
Hampshire
BH25 6DE*

A characterful converted one double bedroom apartment offering spacious room sizes, with the potential to convert into a two bedroom unit if required. Other features of the property include a long lease, reasonable maintenance charges, a modern kitchen and bathroom, and the property would make an ideal buy to let or first time buy.

- Entrance Hall
- Landing
- Sitting/Dining Room
- Kitchen
- Double Bedroom
- Bathroom
- 189 Year Lease From August 1988
- Maintenance, Ground Rent & Insurance: £1,629.50 PA



The Property

Entrance hall with stairs leading to the first-floor landing.

Landing with access hatch to the roof space.

Large sitting/dining room with a UPVC double glazed window overlooking Whitefield Road, featuring an attractive fire surround with stone backing. This room could be subdivided to create a second bedroom, if required.

Modern kitchen fitted with a range of grey wall and base units, dark worktops, and an inset one and a half bowl sink unit with mixer tap. There is space for a cooker, tall fridge/freezer, washing machine, and tumble dryer, along with a mounted Gloworm gas fired boiler, tile effect flooring, and part tiled walls.

Double bedroom with outlook to the side.

Fully tiled modern bathroom fitted with a white suite comprising a tiled panel bath with a mixer tap and independent shower over with a glass shower screen, a wash basin with storage beneath, a WC, tile effect flooring, recessed ceiling spotlights, a chrome ladder style heated towel rail, and a UPVC double glazed window.

The property benefits from UPVC double glazing and gas fired central heating. An internal viewing is strongly recommended.



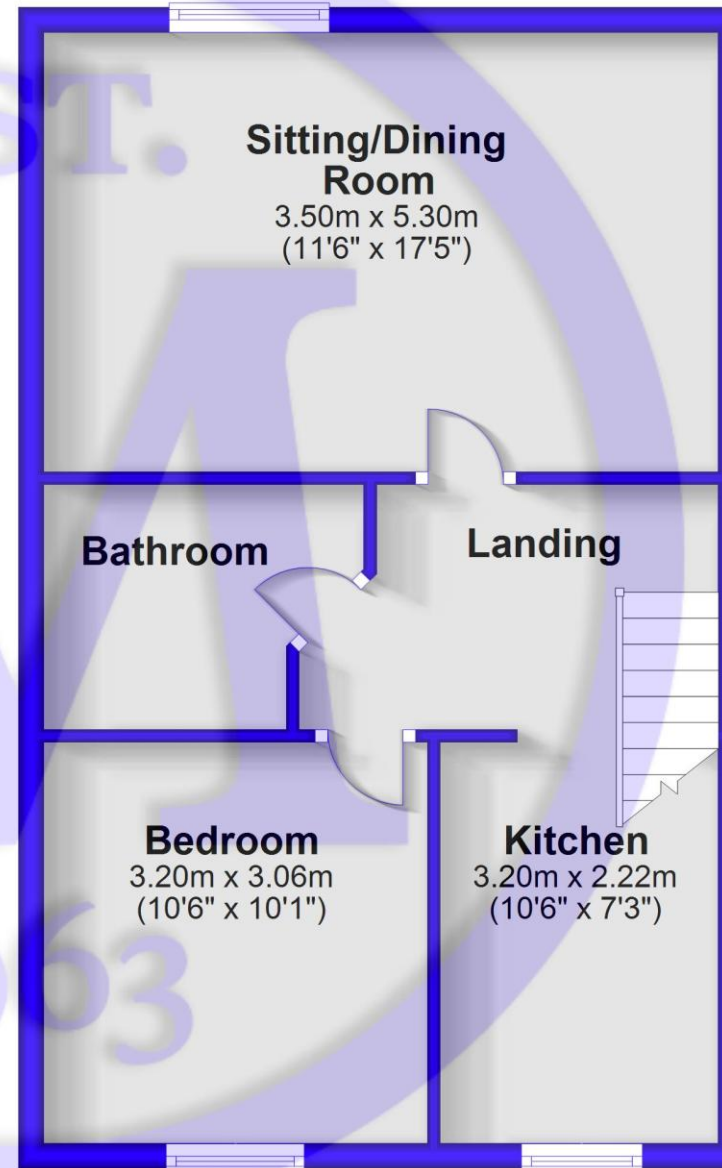


Services

- Mains gas, electric, drainage and water
- Council Tax Band A
- Energy Performance Rating C

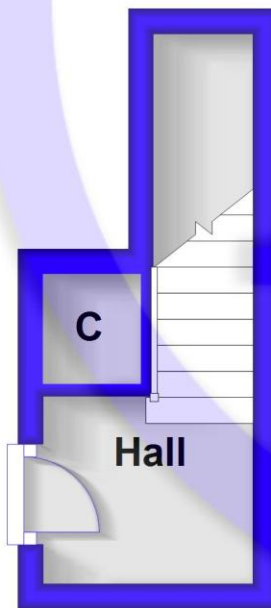
Second Floor

Approx. 47.3 sq. metres (509.5 sq. feet)



First Floor

Approx. 5.7 sq. metres (60.9 sq. feet)



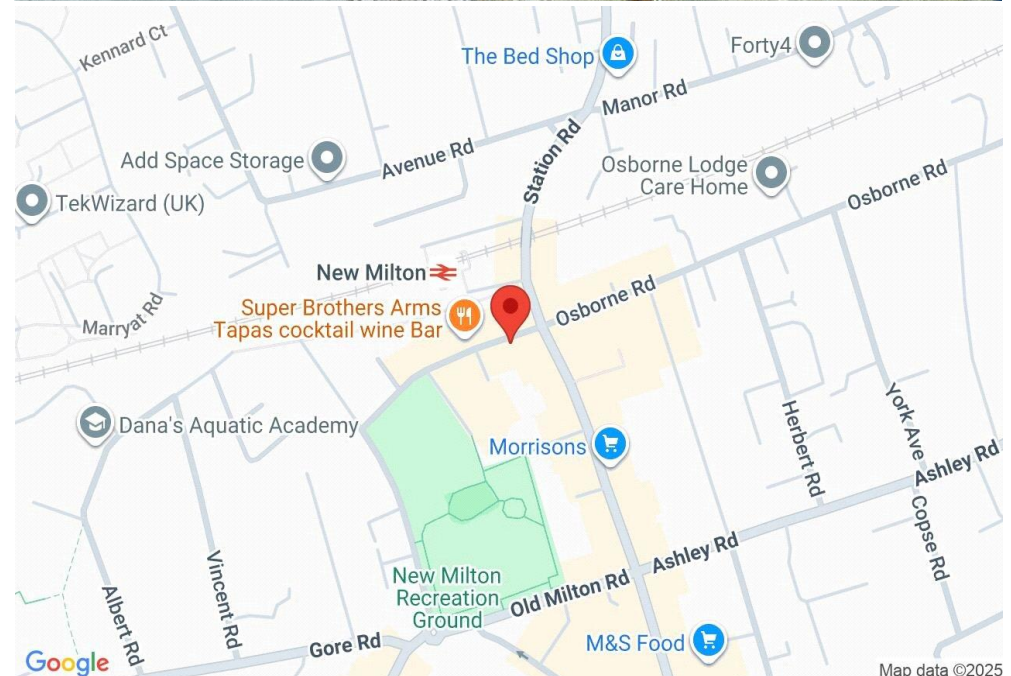
Total area: approx. 53.0 sq. metres (570.4 sq. feet)

Situation

New Milton is a thriving market town on the western edge of Hampshire. The area lies on a picturesque stretch of the Solent coastline with stunning views over Christchurch Bay to the Isle of Wight. With the enviable location, beautiful coastal walks, main line railway station reaching London Waterloo in less than two hours, excellent schools, both private and state, 27 hole links style golf course and the renowned Chewton Glen hotel, New Milton remains an extremely popular location for those relocating to the coast.

Directions

From Mitchells, turn left at the traffic lights and proceed along Station Road. Take the first turning left into Whitefield Road, where the property will be found on the left hand side.





Mitchells.uk.com
info@mitchells.uk.com
01425 616411

Centenary Buildings
8-10 Old Milton Road
New Milton
Hampshire
BH25 6DT

Mitchells
1963 — TODAY

