

Total Area: 64.5 m² ... 695 ft²
All measurements are approximate and for display purposes only



Mitchells
1963 — TODAY



**9 Highcliffe House, 411a Lymington Road,
Highcliffe On Sea, BH23 5EN**

Asking Price: £215,000
Leasehold

9 Highcliffe House, 411a Lymington Road, Highcliffe On Sea, Christchurch, Dorset, BH23 5EN

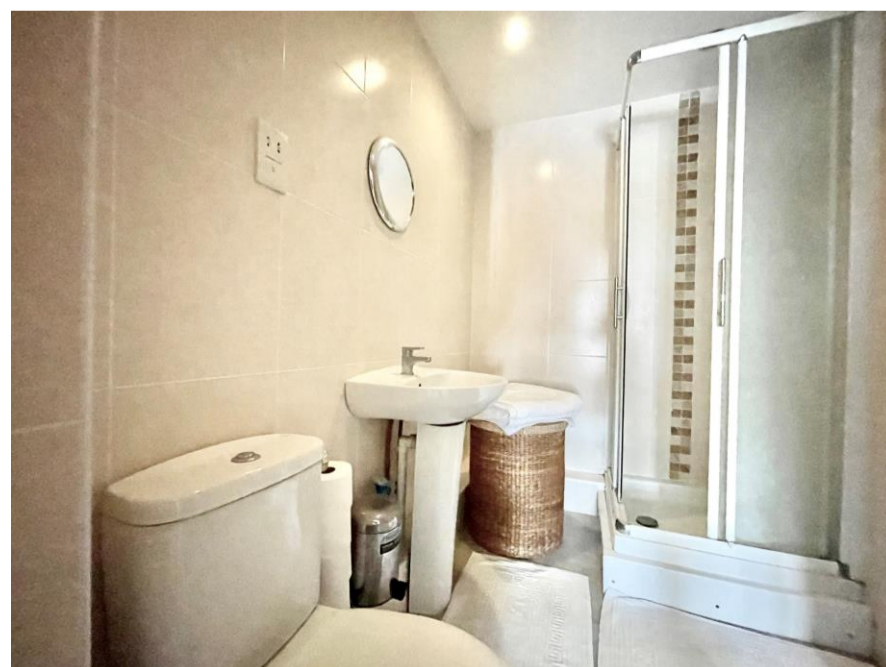
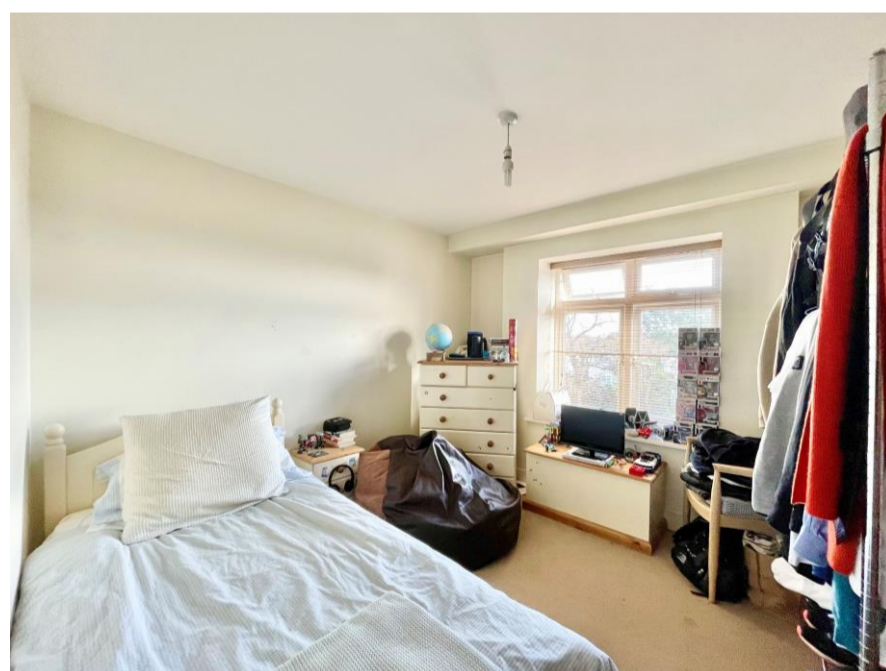
A modern, first floor flat with lift access and two bath/shower rooms, conveniently situated in this central position with a long lease and allocated parking. This flat is currently let at a monthly rental of £850 pcm so could be sold as an ongoing investment if required. The flat is well presented with an open plan kitchen/living space that faces south, at the back of the block with both bedroom being doubles. There is an en-suite shower room to the main bedroom and whilst the flat is in generally good condition, it does now require decorating a re-carpeting.

Accommodation & Amenities

- Purpose built flat over commercial premises right in the village centre
- Security entry phone system
- Gas fired central heating and UPVC double glazing
- Integrated appliances in the kitchen
- Balance of lease approx. 110 years
- Service charge £1399.50 p/a
- Ground rent £200 p/a
- Very convenient with the shops on the doorstep and the cliff top and beach being just around the corner
- Quiet part of the block with all the principal rooms facing south at the back of the building, away from the Lymington Road
- Council Tax 'B' £1610.83
- EPC 'B'



284 Lymington Road, Highcliffe, Christchurch, BH23 5ET | highcliffe@mitchells.uk.com | 01425 272206 | <https://mitchells.uk.com>



284 Lymington Road, Highcliffe, Christchurch, BH23 5ET | highcliffe@mitchells.uk.com | 01425 272206 | <https://mitchells.uk.com>