

Total Area: 80.0 m² ... 861 ft² (excluding balcony)

All measurements are approximate and for display purposes only

Mitchells
1963 — TODAY



**8 Vita Maris, 19-21 Wortley Road,
Highcliffe On Sea, BH23 5DR**

Asking Price: £450,000

Share of Freehold

'Easter Incentive' Stamp duty to be paid by the developer on reservations made by Easter 2024'

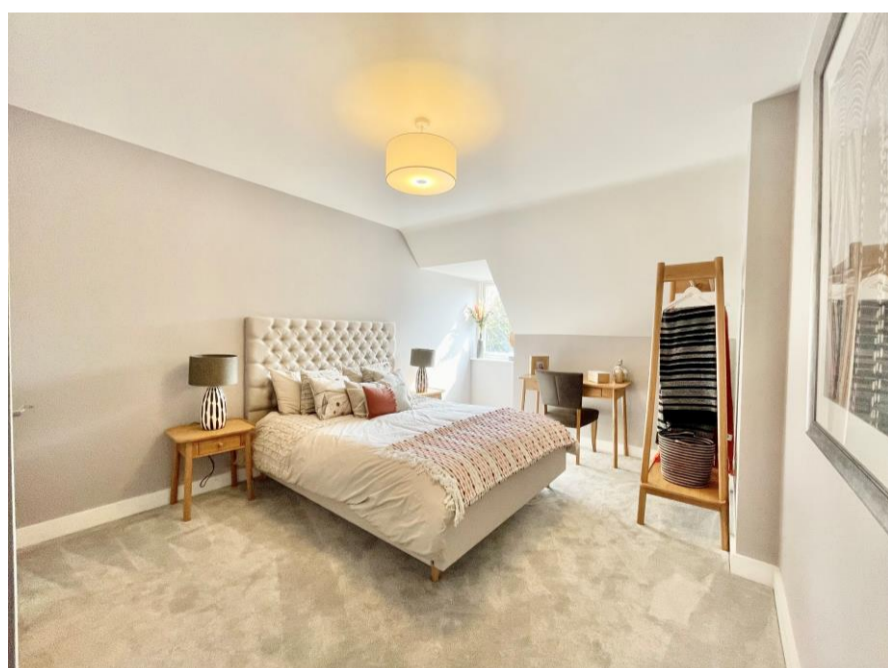
Come and view our show home! Vita Maris is a striking new development of just 8 apartments, all with private patios/balconies and located in this supremely central position right in the heart of the village. These stylish apartments offer the very latest in luxury living with lift access, underfloor heating, electric car charging points and designer fittings. Ready now with a 10 year new home warranty.

Accommodation & Amenities

- Contemporary styling with designer kitchens, quartz work surfaces and integrated appliances
- Video entry phone system, allocated parking with electric charging point and communal cycle store
- Quality internal doors, flat plastered ceiling with LED spots, under floor heating with hard floors on kitchen/bathrooms and carpets elsewhere
- Luxuriously appointed bath/shower rooms with attractive ceramic tiling, towel rails and illuminated mirrors
- Private outside space with all apartments
- Shared freehold with 999 year leases
- Service charge approx. £1625 p.a.
- Ready for immediate occupation with a show home available to view today
- Perfect for retirement living, second home, investment
- Council Tax TBC
- EPC 'B'



284 Lymington Road, Highcliffe, Christchurch, BH23 5ET | highcliffe@mitchells.uk.com | 01425 272206 | <https://mitchells.uk.com>



284 Lymington Road, Highcliffe, Christchurch, BH23 5ET | highcliffe@mitchells.uk.com | 01425 272206 | <https://mitchells.uk.com>