

5 STIRLING WAY
MUDEFORD, BH23 4JJ

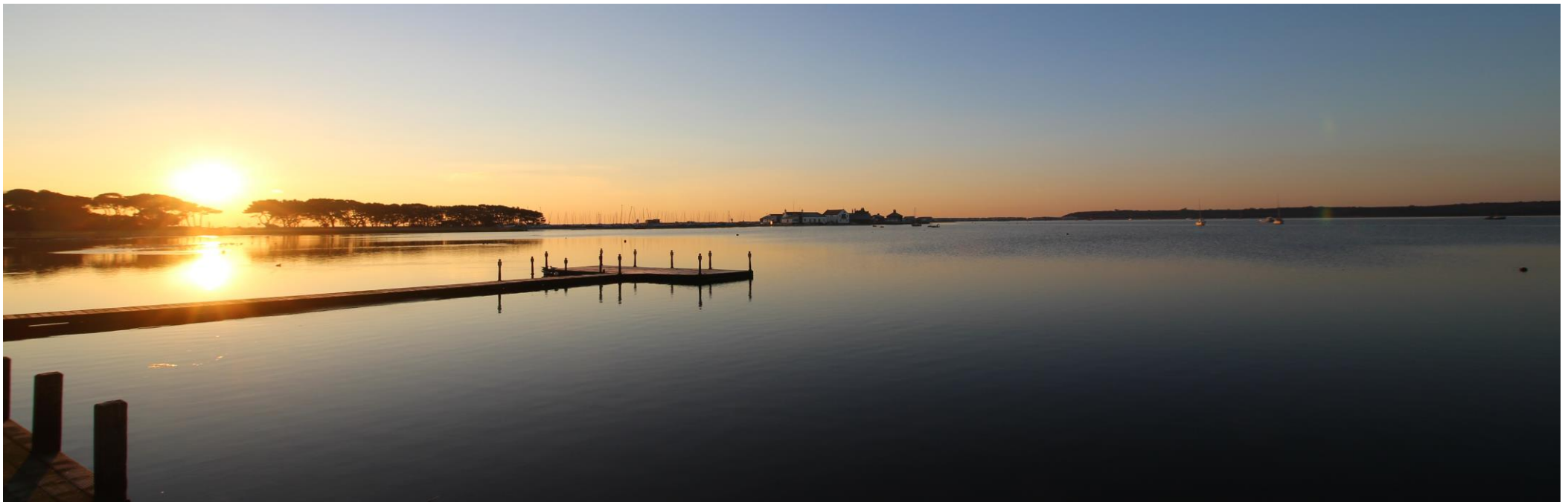




STIRLING WAY, MUDEFORD

A beautifully presented and completely refurbished detached bungalow situated in this most sought after of locations right in the heart of Mundeford, being just around the corner and within walking distance of the award winning beaches at Friars Cliff and Mundeford Quay. The property features a wonderful open plan living space, three bedrooms, family bathroom and separate ensuite this lovely home benefits from a low maintenance rear garden, large driveway and detached garage. No forward chain.

THREE BEDROOMS • TWO BATH/SHOWER ROOMS (ONE EN-SUITE) • OPEN PLAN
KITCHEN/DINING/LIVING • GARDENS • OFF-ROAD PARKING • DETACHED GARAGE



The Property

- Immaculate three bedroom detached bungalow
- Completely refurbished throughout
- Open plan kitchen/dining/living area with doors onto the garden
- Modern family bathroom and ensuite shower room
- Low maintenance rear garden with composite decking
- Detached garage and large driveway
- Walking distance of Avon Beach and Mundeford Quay
- No forward chain
- Council Tax 'D' £2071.06
- EPC 'C'

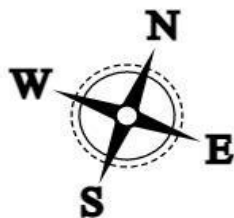
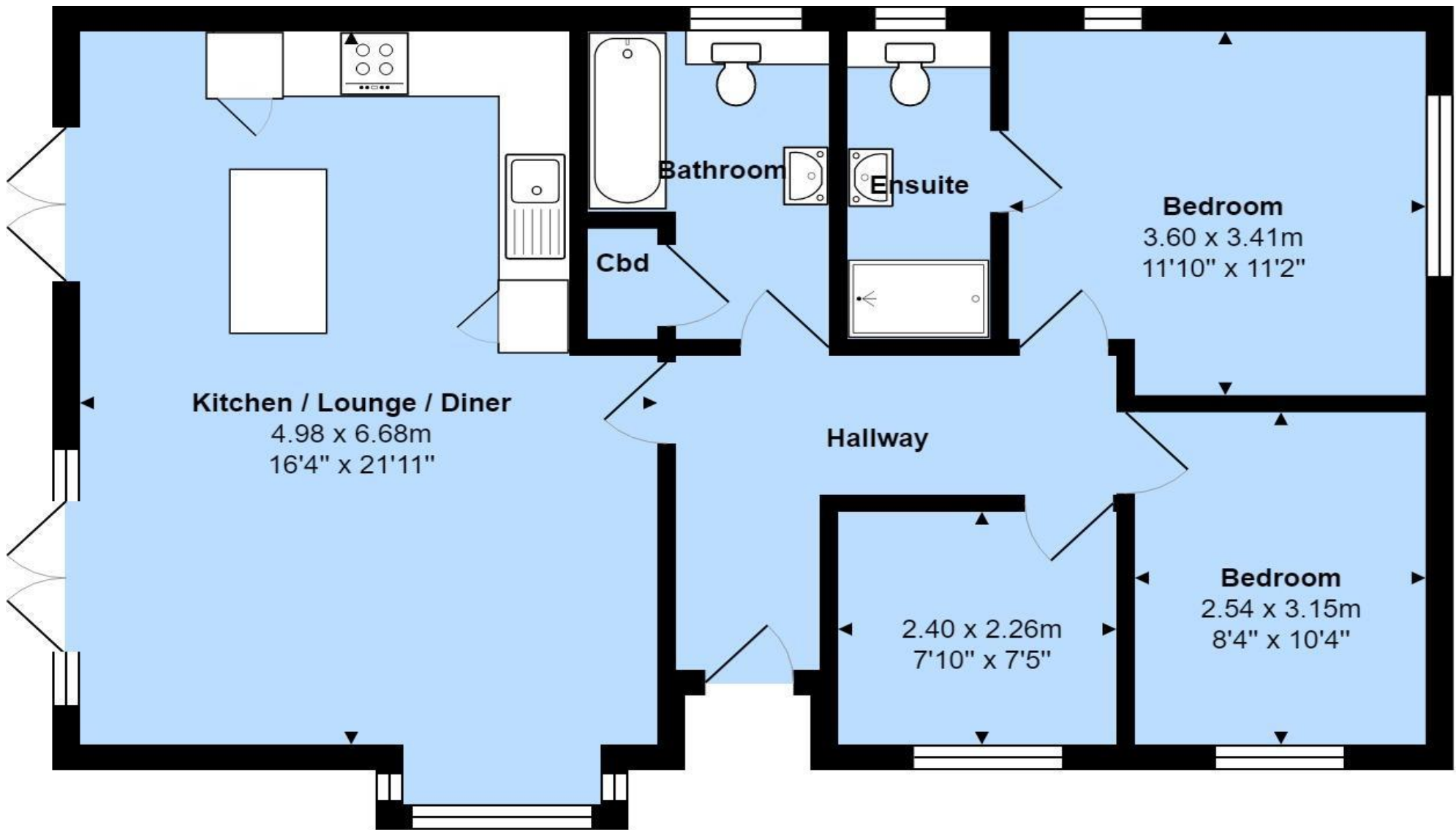




Location

Mundeford began as a small fishing village close to the entrance of Christchurch Harbour which still sees fishing boats landing their catch today. The area enjoys award winning sandy beaches at Avon beach and plenty of wildlife activity on Hengistbury Head and Stanpit Marsh Nature Reserve. The popular Mundeford Sandbank attracts visitors every year to the private beach huts with the Harbour providing a sheltered environment for watersports activities. With a friendly, community feel, it is no wonder Mundeford is becoming a popular choice for relocation.





Total Area: 77.4 m² ... 833 ft²

All measurements are approximate and for display purposes only



www.yourhomezone.co.uk





Cambridge House, 112-114 Stanpit, Christchurch, Dorset BH23 3ND mudford@mitchells-estateagents.co.uk

01202 499295
mitchells.uk.com