



57 Greenways, Highcliffe on Sea, BH23 5BB

£795,000

Mitchells
1963 — TODAY



Greenways, Highcliffe on Sea

VENDORS SUITED An incredibly spacious detached bungalow of about 1800sqft, situated on a sunny south-westerly plot on the southern fringe of the Wolhayes Garden Estate. This property features very generous bedroom accommodation, including a master suite comprising an en-suite shower room and walk-in wardrobe. Tastefully extended by the current vendors, creating a large kitchen diner with a separate utility room and spacious lounge. The large rear extension offers contemporary living space with an open plan kitchen diner and separate utility room. Superb outside space to enjoy the sun throughout the day, including a lovely new seating area to catch the evening sunset.

- **FOUR BEDROOMS • THREE BATH/SOWER ROOMS (TWO EN-SUITE) • KITCHEN/DINER • UTILITY ROOM • LOUNGE • GARAGE • GARDENS • GARDEN STORE • OFF-ROAD PARKING •**



The Property

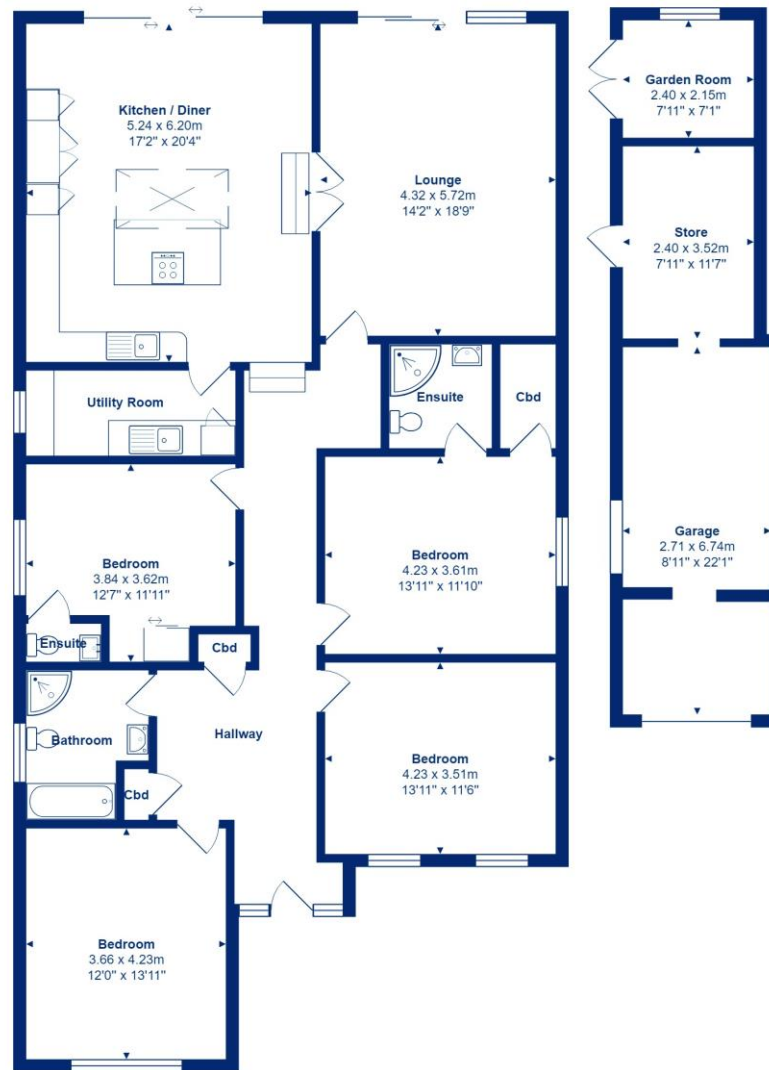
- Quality detached bungalow with deceptively spacious accommodation featuring large, airy rooms
- Stunning large kitchen/dining room with a separate utility room, both with underfloor heating
- Large sitting room with underfloor heating, feature doors onto the outside terrace
- Master bedroom with an en-suite and walk in wardrobe
- Recently decorated with an impressive reception hall
- Family bathroom and ensuite cloakroom to the second bedroom
- Large plot with plenty of parking, garaging/workshop and gazebo that covers a large hot tub
- Indian sandstone terrace running the whole width of the property, good sized lawn and outside seating area to watch the sunset
- Modern heating, wiring, UPVC windows and tasteful décor throughout
- One of the largest bungalows available at this price point in Highcliffe at the moment
- Council Tax 'E' £2658.58
- EPC 'C'





Location

Highcliffe is a small village in the borough of Christchurch, Dorset. The village lies on a picturesque stretch of Solent coastline with views over Christchurch Bay to the Isle of Wight. Fuelled by its enviable location, coastal walks, main line railway links to London (in under two hours) excellent schools and the popularity of the Chewton Glen Hotel, the Highcliffe Golf Course and the Nature Reserve at Steamer Point, Highcliffe is a popular area for those relocating to the coast.



Total Area: 163.7 m² ... 1762 ft² (excluding garage, store, garden room)

All measurements are approximate and for display purposes only







mitchells.uk.com
highcliffe@mitchells.uk.com
01425 272206

Highcliffe on Sea
284 Lymington Road
Highcliffe on Sea
BH23 4TH

