



*54 Chewton Way, Highcliffe on Sea, BH23 5LS*

*£795,000*

**Mitchells**  
1963 — TODAY







# *Chewton Way, Highcliffe on Sea*

A stunning, nearly new detached house of about 1400sqft, set behind gates giving excellent privacy and security. The specification is first class inside and out and the house is presented in true 'show-home' order with designer fittings and stylish fitted kitchen. Built by well-known local builders Sublime and designed by award winning architects, Aspire, this superb home offers the very latest in luxury living and is well located within a short stroll of the bustling village and cliff top. Strongly recommended.

- **THREE BEDROOMS • TWO BATH/SHOWER ROOMS (ONE EN-SUITE) • KITCHEN/DINING/FAMILY ROOM • LOUNGE**
- **UTILITY ROOM • GF WC • GARDENS • OFF-ROAD PARKING**



## The Property

- Impressive entrance hallway with porcelain tiled floor leading into the open plan living space
- Designer kitchen with quartz worktops, fitted with a range of quality appliances and separate utility room
- Large, open plan living space with plenty of space for dining table/sofas and bifold doors leading to the terrace and rear garden
- Separate sitting room with feature fireplace and recess built for wall mounted TV's
- Three spacious double bedrooms with bespoke fitted wardrobes to bedroom one
- Luxuriously fitted, fully tiled bath/shower rooms with quality sanitary ware
- Gas fired central heating with underfloor heating to the ground floor with pressurised hot water systems
- Landscaped garden with large patio, artificial grass, quality fencing and outside lighting
- Parking and an open carport
- Benefit of a new build warranty which has approximately nine years remaining.
- Council Tax 'E' £2658.58
- EPC 'B'



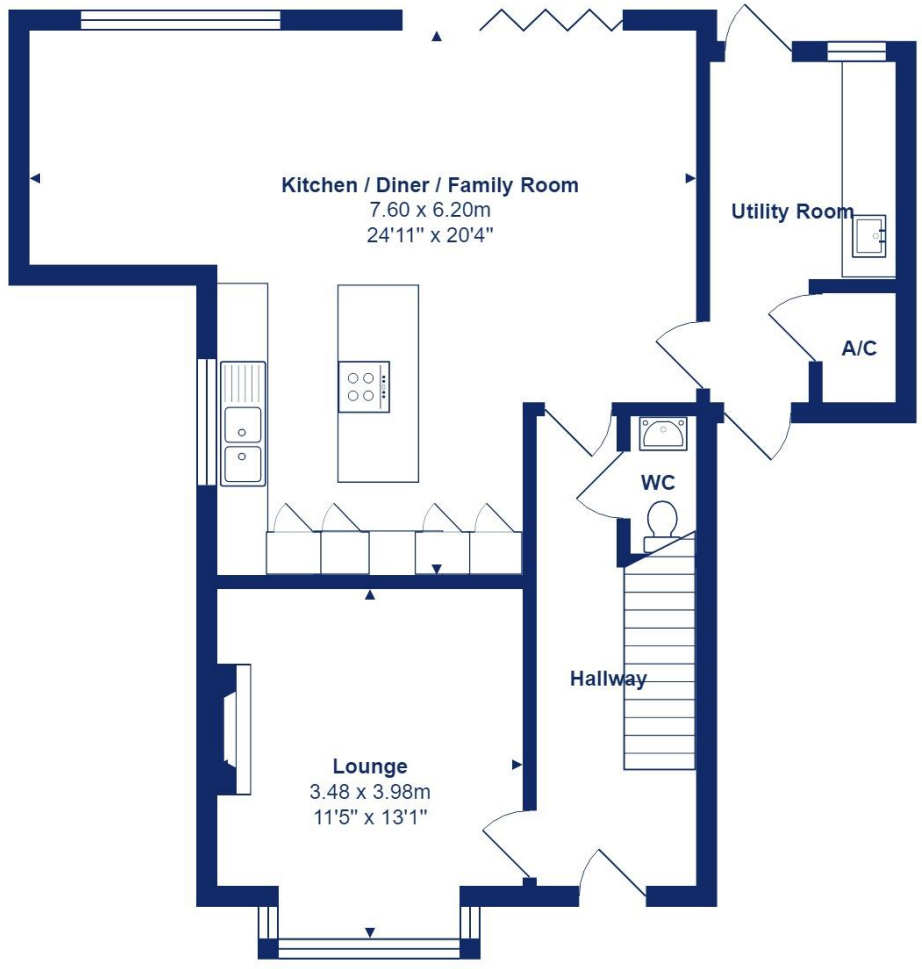




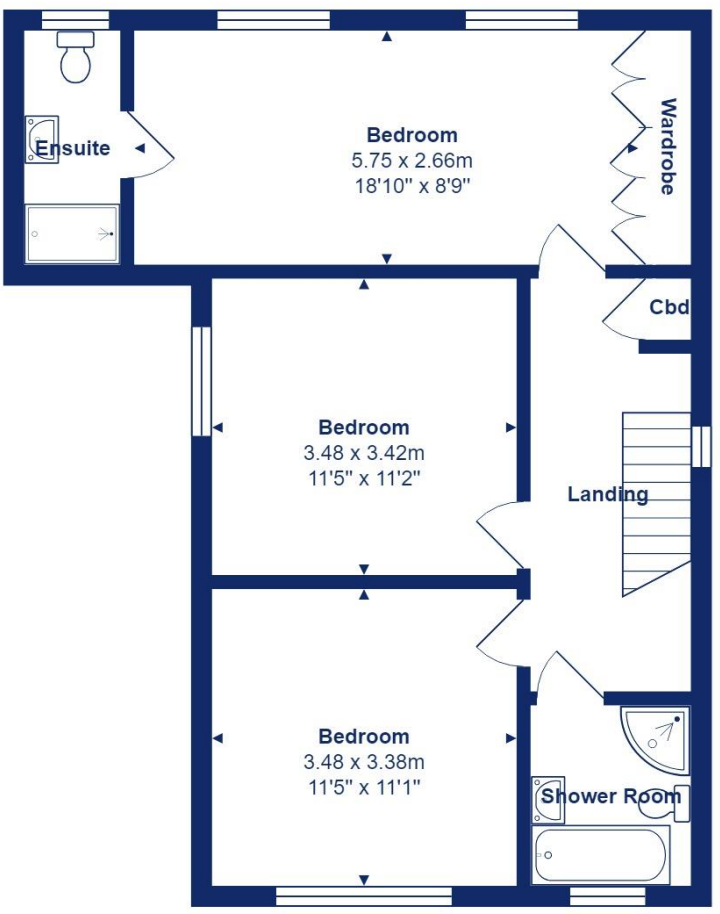
## Location

Highcliffe is a small village in the borough of Christchurch, Dorset. The village lies on a picturesque stretch of Solent coastline with views over Christchurch Bay to the Isle of Wight. Fuelled by its enviable location, coastal walks, main line railway links to London (in under two hours) excellent schools and the popularity of the Chewton Glen Hotel, the Highcliffe Golf Course and the Nature Reserve at Steamer Point, Highcliffe is a popular area for those relocating to the coast.





Ground Floor



First Floor



Total Area: 127.7 m<sup>2</sup> ... 1375 ft<sup>2</sup>  
All measurements are approximate and for display purposes only











[mitchells.uk.com](http://mitchells.uk.com)  
[highcliffe@mitchells.uk.com](mailto:highcliffe@mitchells.uk.com)  
01425 272206

Highcliffe on Sea  
284 Lymington Road  
Highcliffe on Sea  
BH23 4TH

