

BURE HOMAGE LANE
MUDEFORD, BH23 4SQ





£795,000 FREEHOLD

A spacious detached chalet in a wonderful position, tucked away on a quiet, leafy lane just moments from Friars Cliff beach and Mudeford Quay, boasting stylish accommodation of nearly 2200 sq ft with a magnificent mature, south facing rear garden.

Immaculately presented throughout, this lovely home features a stunning lounge diner with feature window and log burning stove, kitchen/breakfast room, separate utility room, three doubles bedrooms with built in storage, three luxury bath/shower rooms (two ensuite), home cinema/ fourth bedroom, garage and workshop. Viewing is advised to appreciate the versatile and spacious accommodation this fantastic property has to offer.

THREE DOUBLE BEDROOMS • FOURTH BEDROOM/HOME CINEMA • THREE BATH/SHOWER ROOMS (TWO EN-SUITE) • KITCHEN/BREAKFAST ROOM
LOUNGE/DINER • LOG BURNING STOVE • CONSERVATORY • GROUND FLOOR W/C • UTILITY ROOM • GARDEN
GARAGE • WORKSHOP • LARGE DRIVEWAY



The Property

- Immaculate detached property of approx 2200 sq ft
- Spacious lounge/dining room with feature window and log burner
- Modern Kitchen/breakfast room, utility room and separate w/c
- Master bedroom with luxury ensuite and walk in wardrobe
- Two further double bedrooms with built in storage
- Two further bath/shower rooms (one ensuite)
- Fourth bedroom/home cinema
- Glass roofed conservatory extension with access to the garden
- South facing rear garden with outdoor seating areas and plenty of storage
- Large driveway, single garage and separate workshop/store
- Council Tax rating 'F' - £3,024.55
- EPC rating 'C'

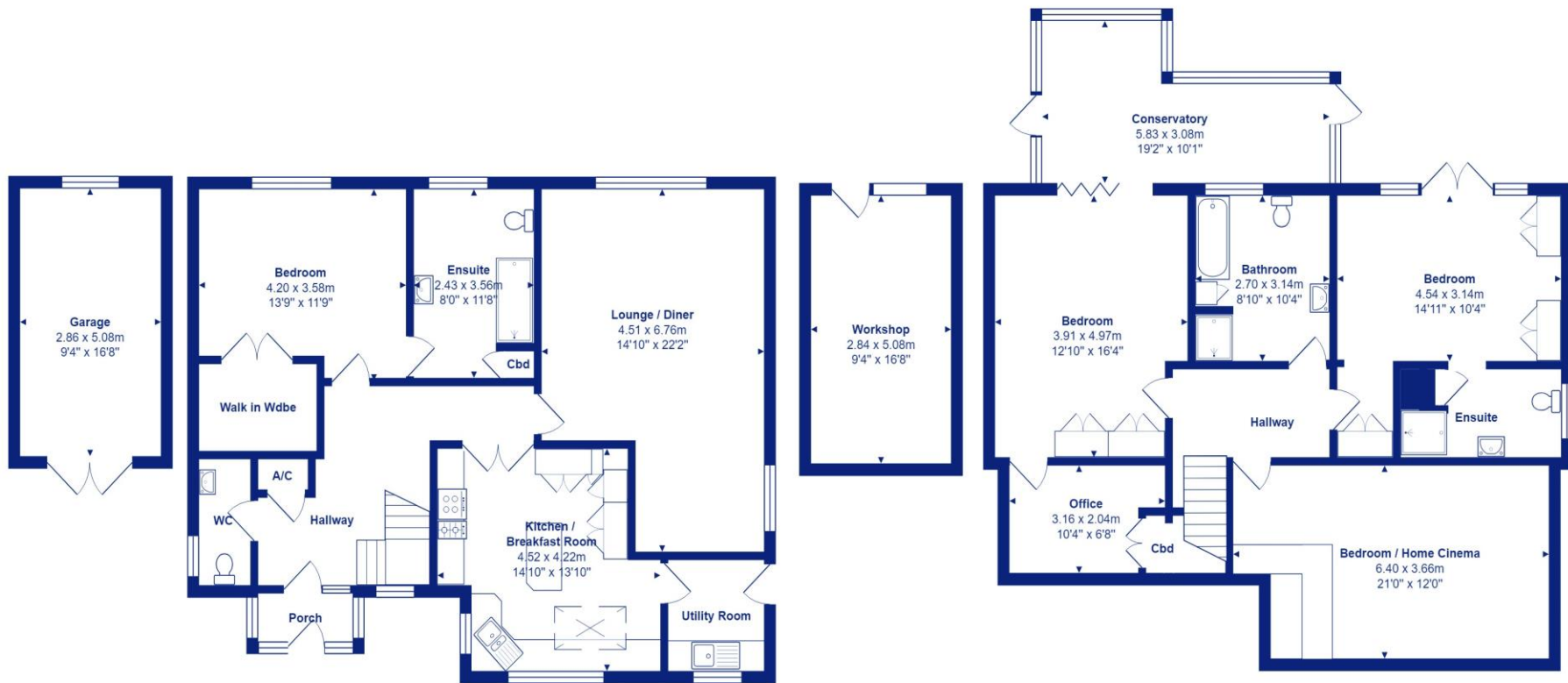




Location

Mudford began as a small fishing village close to the entrance of Christchurch Harbour which still sees fishing boats landing their catch today. The area enjoys award winning sandy beaches at Avon beach and plenty of wildlife activity on Hengistbury Head and Stanpit Marsh Nature Reserve. The popular Mudford Sandbank attracts visitors every year to the private beach huts with the Harbour providing a sheltered environment for watersports activities. With a friendly, community feel, it is no wonder Mudford is becoming a popular choice for relocation.





Ground Floor

Lower Ground Floor



Total Area: 203.4 m² ... 2190 ft² (excluding garage, workshop)

All measurements are approximate and for display purposes only







Cambridge House, 112-114 Stanpit, Christchurch, Dorset BH23 3ND mudford@mitchells-estateagents.co.uk

01202 499295

mitchells.uk.com