

Ground Floor

Approx. 69.6 sq. metres (749.6 sq. feet)

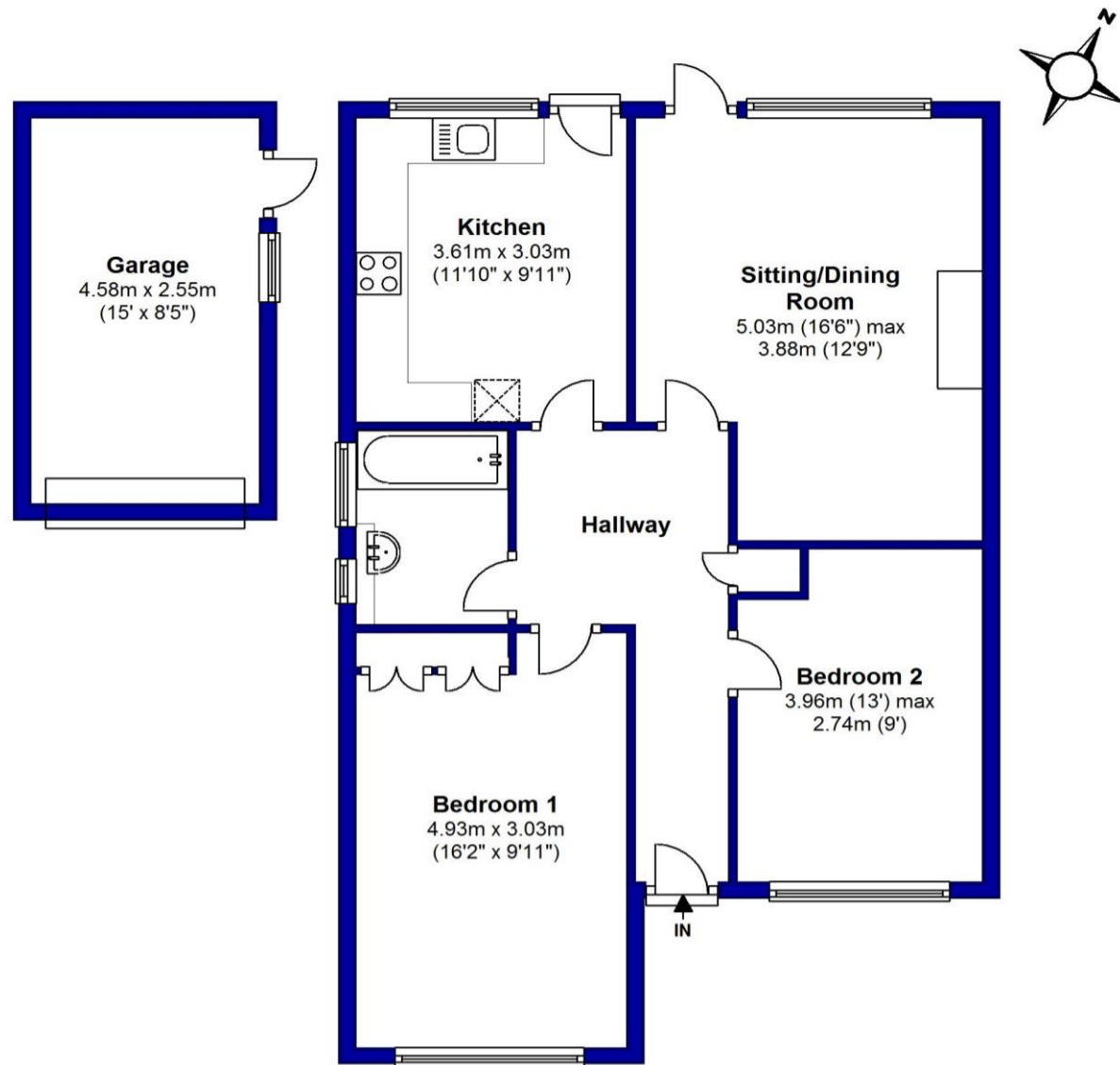


Illustration for identification purposes only; measurements are approximate, not to scale.
EPC South Coast Surveys
Plan produced using The Mobile Agent.

Mitchells
1963 — TODAY



4 Clive Road, Highcliffe On Sea, BH23 4NY

Asking Price: £439,995

Freehold

4 Clive Road, Highcliffe on Sea, Christchurch, Dorset, BH23 4NY

A deceptively spacious and beautifully presented two double bedroom semi detached bungalow of approx 750sqft. The property stands on a good size sunny plot with easily maintained garden to the rear. Situated in this popular part of Highcliffe within easy walking distance of Hinton Admiral main line railway station, Highcliffe School and about a mile from the main high street shopping centre, cliff top and beach.

Accommodation & Amenities

- Two double bedrooms both with fitted wardrobes & attractive shutters
- Good size fitted kitchen with striking floor covering & access onto the rear garden
- Delightful sitting room with feature fireplace, bamboo wooden flooring and double doors onto the rear garden
- Smart contemporary fitted bathroom with attractive shutters
- Spacious entrance hallway with bamboo wooden flooring
- Tasteful decorations throughout
- Gas fired central heating & upvc double glazing
- Fantastic large garden room with light and power, currently set up as home gym but could be used for multiple purposes
- Sunny rear garden with well thought out areas for entertaining and relaxing
- A long driveway provides off road parking for several cars
- Single garage
- Walking distance of local beauty spot Nea Meadows, Highcliffe School catchment and close to Hinton Admiral railway line
- Council Tax 'C' £1933.52
- Energy Performance Rating 'C'



284 Lymington Road, Highcliffe, Christchurch, BH23 5ET | highcliffe@mitchells-estateagents.co.uk | 01425 272206 | <https://mitchells.uk.com>



284 Lymington Road, Highcliffe, Christchurch, BH23 5ET | highcliffe@mitchells-estateagents.co.uk | 01425 272206 | <https://mitchells.uk.com>