

Total Area: 119.6 m² ... 1287 ft²
 All measurements are approximate and for display purposes only



**Montagu Park, Waterford Gardens,
 Highcliffe On Sea, Christchurch, BH23 5LH**

Asking Price: £450,000

Freehold

Montagu Park, Waterford Gardens, Highcliffe On Sea, Christchurch, Dorset BH23 5LH

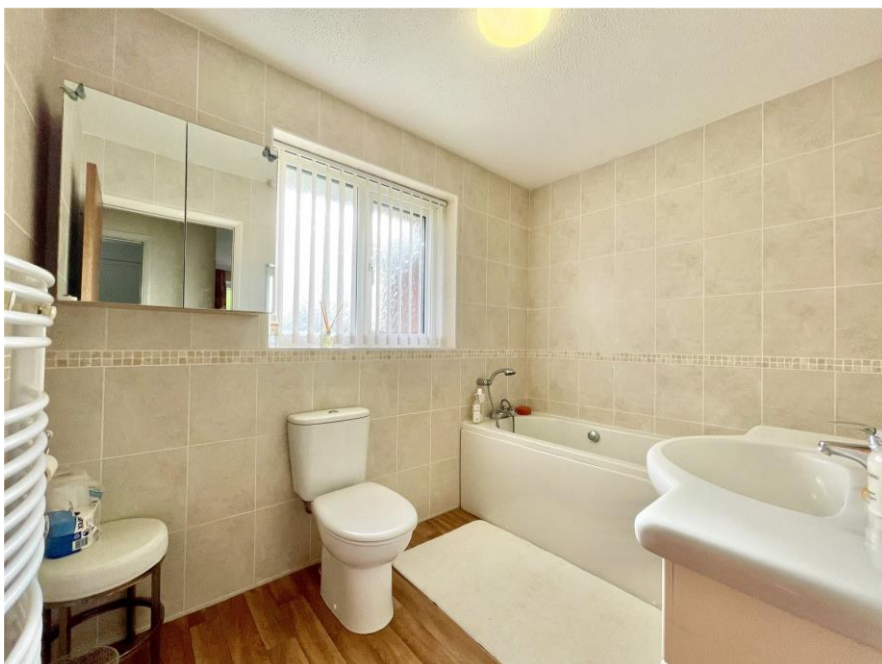
A superbly situated town house just yards from the shops and the sea on the south side of the Lymington road on this exclusive development. There is a pretty courtyard style garden to the rear, and communal gardens to the front with visitors parking and garage in a nearby block. There are only six of these town houses on the Montagu Park development and are rarely available – we expect plenty of interest for this sought after home. NO FORWARD CHAIN.

Accommodation & Amenities

- Nicely presented town house of approx. 1300sqft
- Fabulous location, south of the High Street
- Three first floor bedroom all with fitted storage
- Two bath/shower room (one en-suite)
- Modern style kitchen leading onto the conservatory extension
- Spacious sitting/dining room with views over the front and also with access onto the conservatory
- Ground floor cloakroom
- Maintenance £427pa for upkeep of communal grounds and gardens by Montagu Park Management Ltd
- Gas fired central heating and upvc double glazed windows
- Council Tax 'E' £2531.29
- EPC 'D'



284 Lymington Road, Highcliffe, Christchurch, BH23 5ET | highcliffe@mitchells-estateagents.co.uk | 01425 272206 | <https://mitchells.uk.com>



284 Lymington Road, Highcliffe, Christchurch, BH23 5ET | highcliffe@mitchells-estateagents.co.uk | 01425 272206 | <https://mitchells.uk.com>