



*18 Sycamore, Hoburne Bashley Holiday Park, BH25 5QR*

*£129,995*

**Mitchells**  
1963 — TODAY







*18 Sycamore  
Hoburne Bashley  
Holiday Park  
New Milton  
Hampshire  
BH25 5QR*

This fantastic brand new Victory Lakewood holiday home is a stunning two bedroom lodge situated on this modern development on Hoburne Bashley Holiday Park. The property has been finished to an exceptional standard with features including a luxury kitchen, high specification bathrooms, two parking spaces and generous decking.

- 2023 Victory Lakewood Lodge 43 x 14
- Second Home Only
- Can Not Be Main Residence
- 2025 Pitch Fees Included
- Entrance Hall
- Kitchen/Living Area
- Two Bedrooms
- En-Suite Shower Room
- Family Shower Room
- Decking
- Parking



## The Property

Entrance hall with storage cupboard, boiler cupboard, shelving for shoes and single radiator

The luxury kitchen is fitted with high specification wall and base units with a contrasting timber effect worktop, built in appliances include an eye level oven, microwave, pull out larder cupboard, slimline dishwasher, tall standup fridge freezer, five burner gas hob with glass splash back and extractor fan over and a four seater table and chairs

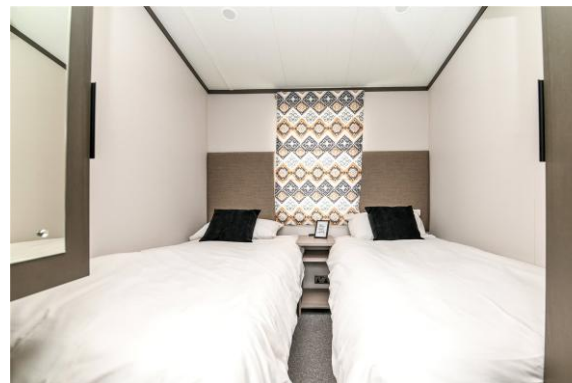
The kitchen opens through to the triple aspect sitting room with a two seater and three seater sofa, one has a pull out sofa bed, feature fire place, TV aerial points and enjoys a sunny southerly aspect

Bedroom two is a twin bedroom with two full sized twin beds, bedside cabinets, wardrobe and wall mounted cupboard

The luxury family shower room has a walk-in double shower with sliding glass shower door, thermostatic shower attachments, WC, wash hand basin with storage beneath and mixer tap over, heated towel rail, mirror fronted medicine cabinet and Velux window

The master bedroom is situated at the rear of the property with a large UPVC picture window, a walk-in wardrobe and its own luxury en-suite shower room.

The en-suite is again finished to an extremely high standard with walk-in double shower with thermostatic shower attachment, WC, wash hand basin with mixer tap over and storage beneath, heated towel ad UPVC window







## *Gardens & Grounds*

To the front of the property is a generous southerly facing decking with glass balustrade, outside LED lighting and leads down to the two parking spaces.

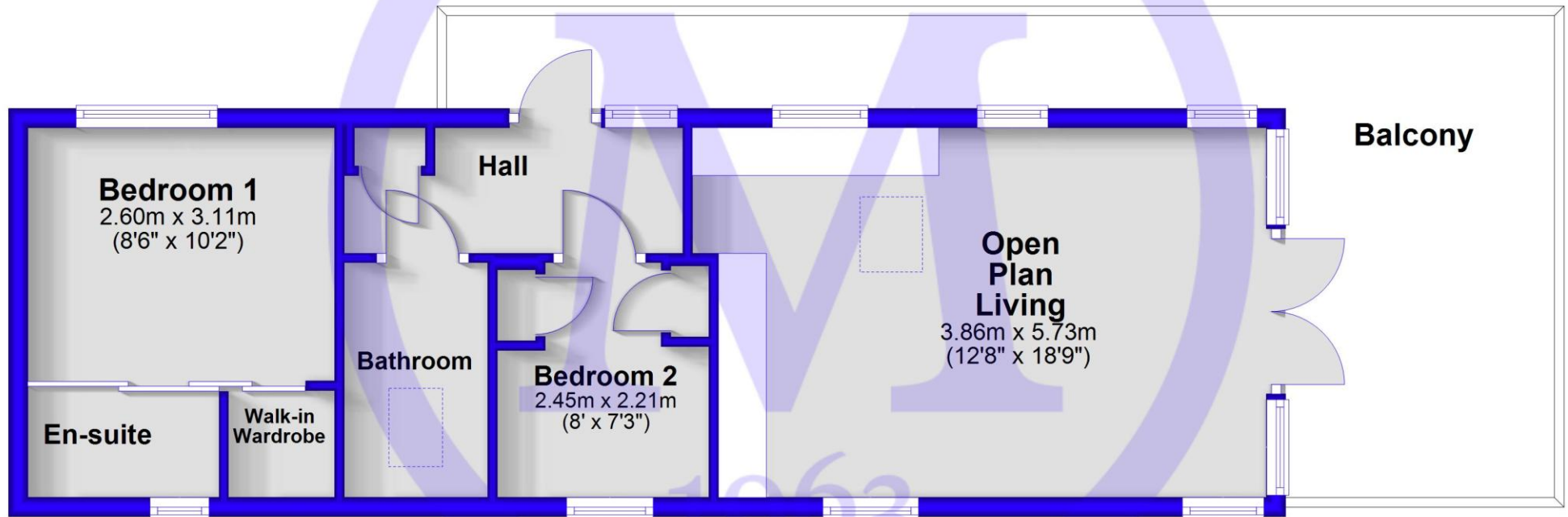


## *Services*

- Mains gas, electric, drainage and water

## Floor Plan

Approx. 50.8 sq. metres (546.4 sq. feet)



Total area: approx. 50.8 sq. metres (546.4 sq. feet)





## Situation

In the heart of the enchanting New Forest Hoburne Bashley is a magical place to escape to with the open forest of the New Forest National Park, Barton on Sea clifftop and beach and New Milton high street all within easy reach. Facilities on offer at the park include an impressive entertainment complex, 9 hole golf course, heated pools, café and Brasserie, convenience store and a multi-use games area.

## Directions

From Mitchells turn left at the traffic lights and proceed over the railway bridge. Upon reaching the roundabout turn right onto Sway Road. After 500 yards turn left into Hoburne Bashley, follow the road round past the reception building and full the signs for Sycamore.



### Park map

- 1 Reception & entertainment complex
- 2 The Venue
- 3 Café h
- 4 Beauty h
- 5 Brasserie 1932
- 6 Lounge bar
- 7 Indoor pool
- 8 Outdoor pool
- 9 Adventure playground
- 10 Crazy golf
- 11 Multi-use sports court
- 12 Holiday home sales office
- 13 Laundryette
- 14 Park shop
- 15 Woodland h
- 16 Toddler's play area
- 17 Outdoor café
- 18 Archery tunnel
- 19 Woodland Activity Area
- 20 Accessible Woodland Walks, Fairy Trail and Picnic Areas
- 21 Recycling
- 22 Nature trail







[Mitchells.uk.com](http://Mitchells.uk.com)  
[info@mitchells.uk.com](mailto:info@mitchells.uk.com)  
01425 616411

Centenary Buildings  
8-10 Old Milton Road  
New Milton  
Hampshire  
BH25 6DT

**Mitchells**  
1963 — TODAY

