



50 Camden Hurst, Milford on Sea, SO41 0WP

£380,000

Mitchells
1963 — TODAY



*50 Camden Hurst
Milford on Sea
Lymington
Hampshire
SO41 0WP*

This truly exceptional first floor apartment is situated in this prestigious development on Milford on Sea clifftop. The development boasts many unique features including a swimming pool, tennis court, bowling green, croquet lawn, stunning communal grounds, under cover parking and generous balconies with stunning views of The Needles and the Isle of Wight.

- Entrance Hall
- Sitting/Dining Room
- Kitchen
- Three Bedrooms
- Shower Room
- En-Suite Shower Room
- Balcony
- Parking



The Property

Entrance hall with carpeted flooring, entry phone system, radiator, storage cupboard and double airing cupboard housing a pressurised hot water cylinder

The sitting/dining room is a particular feature of the property with a bright and airy triple aspect, ample space for a six seater table and chairs and a three piece suite and a TV aerial point. Off the sitting room are sliding patio doors leading out to a generous balcony with high level walls on either side and glass balustrade to the front with stunning views across the Solent to The Needles on the Isle of Wight

The kitchen is fitted with a range of white gloss wall and base units with a contrasting stone effect worktop and a serving hatch through to the dining room, storage cupboard and integrated appliances include an eye level double oven, electric four burner hob with extractor fan over, one and a half bowl sink with mixer tap over and drainer, radiator and space and plumbing for a tall stand up fridge freezer, washing machine and slimline dishwasher, timber effect flooring and large UPVC window

The main shower room has been recently refitted to an extremely high standard with large double walk-in shower with thermostatic shower attachment and glass shower screen, wash hand basin with mixer tap over and storage beneath, WC, mirror with built in light, fully tiled walls, and timber effect flooring

Bedroom three, currently used as a home office, has built in wardrobe, UPVC window, a single radiator and space for a single bed or desk

Bedroom two is a fantastic double bedroom with space for a king size bed, bedside cabinets, has built in wardrobes and a UPVC window giving an outlook towards the swimming and Milford Common.

The master bedroom has a generous amount of built in storage, space for a king size bed, with built in bedside cabinets, UPVC window with plantation shutters and benefits from an en-suite shower room

The en-suite shower comprises timber effect flooring, fully tiled walls, walk-in shower with thermostatic shower attachments and sliding glass shower screen, wash hand basin with mixer tap over and storage beneath, WC with hidden cistern, shaver point and UPVC window





Gardens & Grounds

To the front of the property is a large area of well kept communal garden, the maintenance of which is paid for out of the annual maintenance charge.

To the rear of the property is under cover parking, a swimming pool, tennis courts and bowling green, with additional areas of visitor parking.

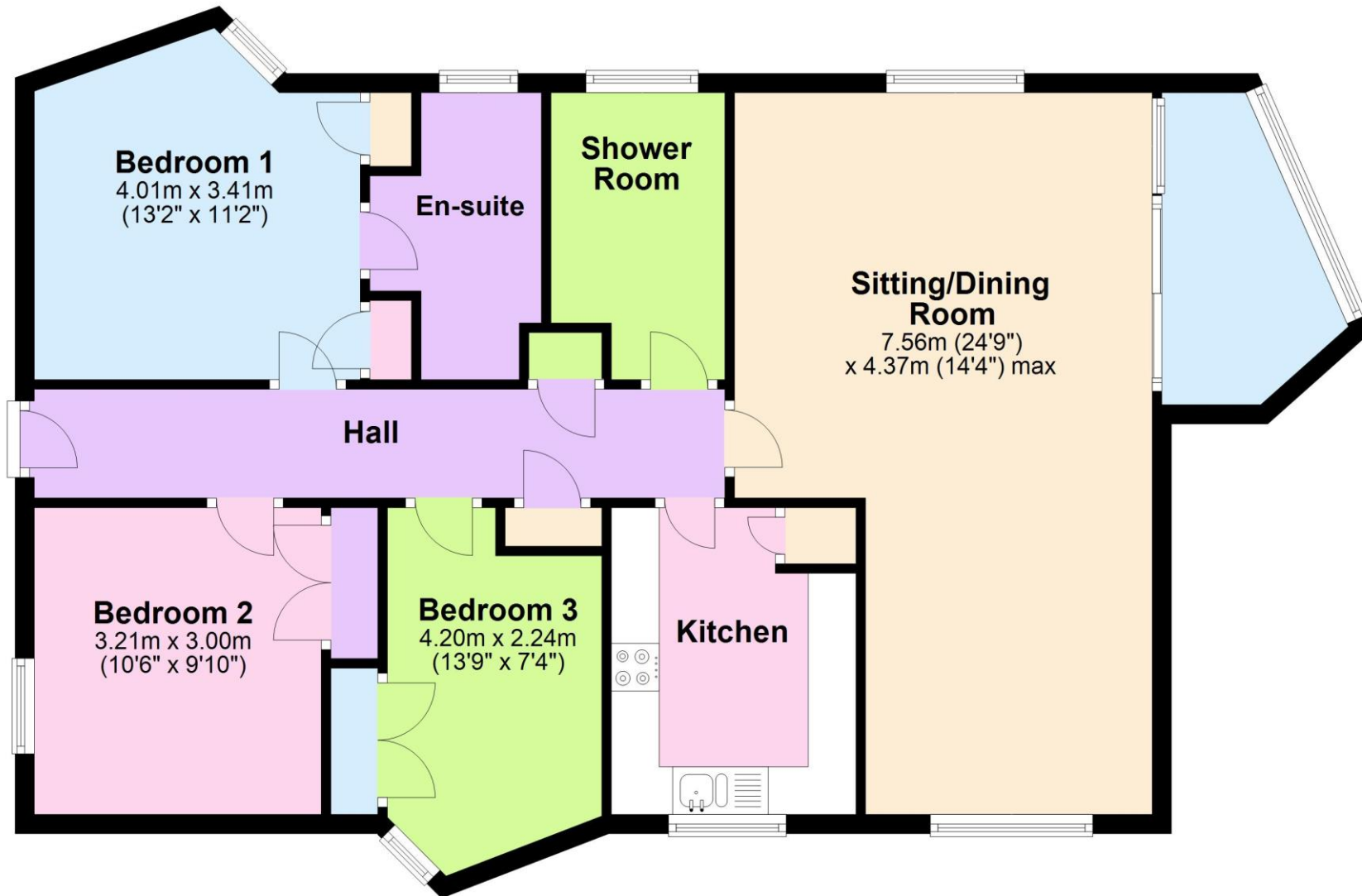
The property must be viewed to be fully appreciated.

Services

- Mains gas, electric, drainage and water
- Council Tax Band D
- Energy Performance Rating C

First Floor

Approx. 95.0 sq. metres (1023.1 sq. feet)



Total area: approx. 95.0 sq. metres (1023.1 sq. feet)

'Whilst every attempt has been made to ensure the accuracy of this floor plan, the measurements of doors, windows, rooms and any other items are approximate and no responsibility is taken for any error, omission or mis-statement. This plan is for illustrative purposes only and should be used as such by any prospective purchaser.'
Plan produced using PlanUp.

Situation

Milford on Sea is a thriving coastal village, well positioned between Barton on Sea and the Georgian market town of Lymington. It boasts a wide variety of commercial outlets including several high quality restaurants, three pubs, a superb tennis and squash club and an attractive village green. Milford's position on such a picturesque stretch of the coast, the lovely beaches, the close proximity of the New Forest National Park and the nearby Keyhaven sailing club make this village one of the most sought after positions on the south coast.

Directions

From Mitchells turn right at the traffic lights and proceed along Station Road. At the roundabout continue straight across into Milford Road. Continue along Milford Road and upon reaching the clifftop, Camden Hurst will be found on the left hand side.





Mitchells.uk.com
info@mitchells.uk.met
01425 616411

Centenary Buildings
8-10 Old Milton Road
New Milton
Hampshire
BH25 6DT

Mitchells
1963 — TODAY

