

4 THURSBY ROAD
HIGHCLIFFE ON SEA, BH23 5PD





4 THURSBY ROAD

An incredibly smart and particularly spacious three double bedroom, two bath/shower room detached bungalow of about 1620 sqft which has been extensively refurbished and remodelled in recent years to make a very stylish home. Situated in this quiet residential road on the Holmhurst Development which is in a particularly sought after part of Highcliffe. Standing on a lovely secluded plot with a sunny westerly aspect.

- THREE BEDROOMS • BATH/SHOWER ROOMS (ONE EN-SUITE) • KITCHEN/DINER • LOUNGE • GARDENS • OFF-ROAD PARKING •



The Property

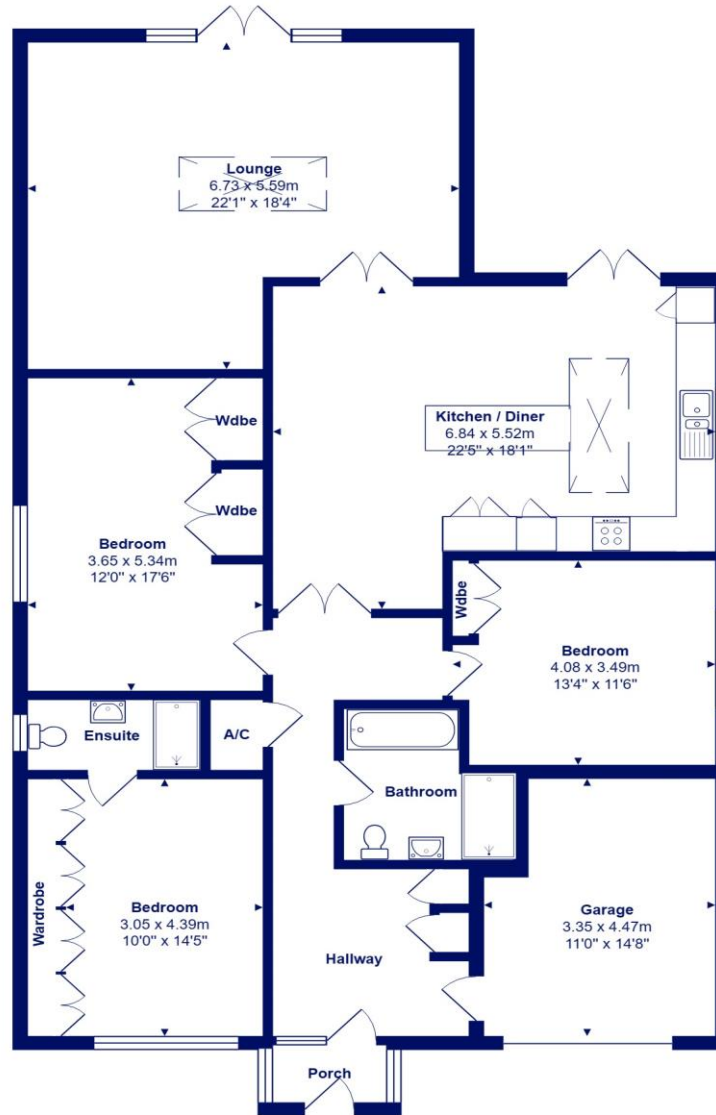
- Immaculate condition throughout
- An excellent range of built-in or fitted wardrobes to all bedrooms
- Smart bathroom with bath and large shower cubicle
- Luxury ensuite shower room to the master bedroom
- A very smart kitchen/diner with integrated appliances measuring approx. 23' x 18'
- Superb 22' x 18' lounge with access to and overlooking the rear garden and electric blind for the sky light
- Light and airy accommodation with two roof lanterns
- Useful storm porch
- Upvc double glazing and Gas fire central heating
- Single garage (with water softener in) and lots of off road parking
- Electric car charging
- A lovely and well established sunny West facing rear garden with a good size area of patio ideal for entertaining
- Council Tax 'F' £2991.53
- EPC 'D'





Location

Highcliffe is a small village in the borough of Christchurch, Dorset. The village lies on a picturesque stretch of Solent coastline with views over Christchurch Bay to the Isle of Wight. Fuelled by its enviable location, coastal walks, main line railway links to London (in under two hours) excellent schools and the popularity of the Chewton Glen Hotel, the Highcliffe Golf Course and the Nature Reserve at Steamer Point, Highcliffe is a popular area for those relocating to the coast.



Total Area: 150.3 m² ... 1617 ft² (excluding garage)

All measurements are approximate and for display purposes only







284 Lymington Road, Highcliffe on Sea, Christchurch, Dorset BH23 5ET highcliffe@mitchells-estateagents.co.uk

01425 272206

mitchells.uk.com