

9 PRIORS CLOSE
FRIARS CLIFF, BH23 4EZ





PRIORS CLOSE, FRIARS CLIFF

A fabulous coastal style chalet in this exclusive enclave right by the beach in Friars Cliff, offering crisp and contemporary living space of about 2000sqft with designer fittings and a superb sunny garden. Immaculate inside and out. Versatile accommodation, with a fabulous ground floor master bedroom suite or annexe. Situated in this small quiet cul de sac, enjoying a sylvan setting, in the heart of the prestigious Friars Cliff area and just moments from the beautiful, award winning beaches.

- FOUR BEDROOMS • THREE BATH/SHOWER ROOMS • KITCHEN/LOUNGE/DINER • UTILITY ROOM • LARGE HALLWAY • GARDENS • OFF-ROAD PARKING •



The Property

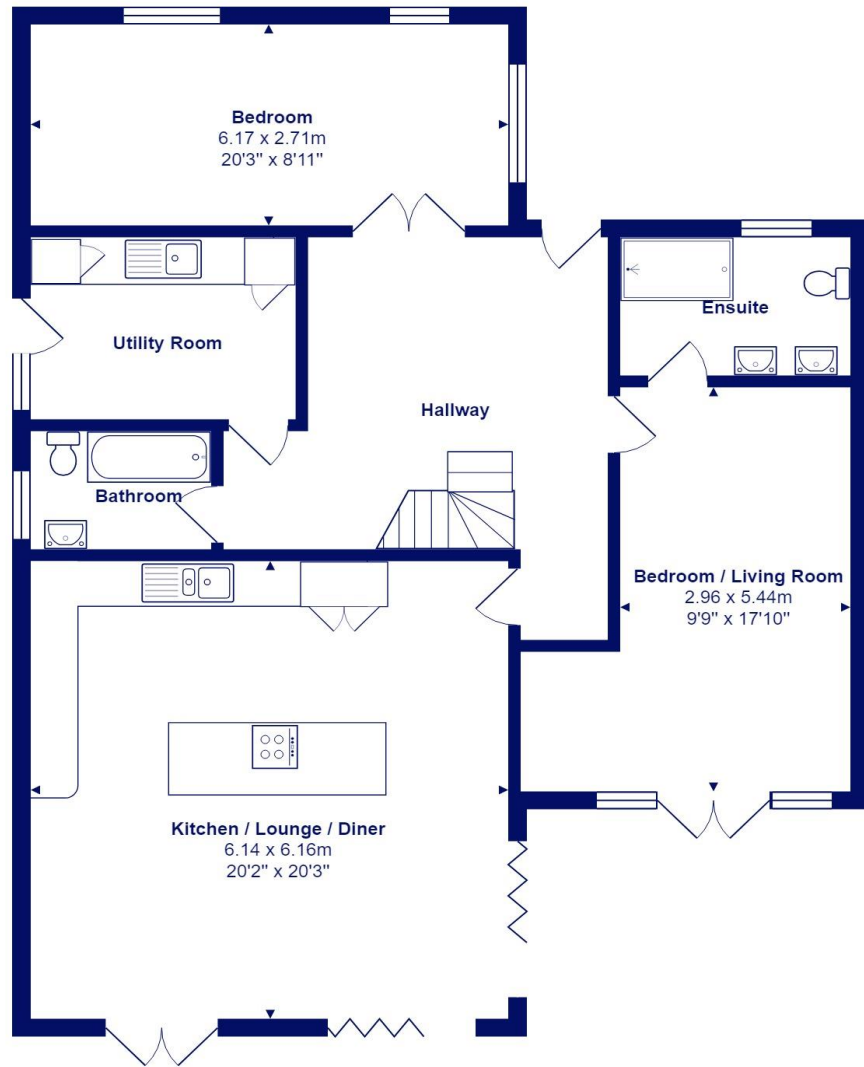
- Impressive spacious reception hall
- Fabulous large kitchen/dining/family room with bifold doors
- Quality integrated appliances
- Ground floor bedroom
- four/separate sitting room
- Three Luxury bath/shower rooms
- Annexe or ground floor master bedroom suite
- Upvc double glazing and Gas fired central heating
- Really lovely tree lined location
- Short walk to the best beach in the area
- Sunny southwest facing private rear garden
- Plenty of off road parking
- Council Tax 'D' £2071.06
- EPC 'C'



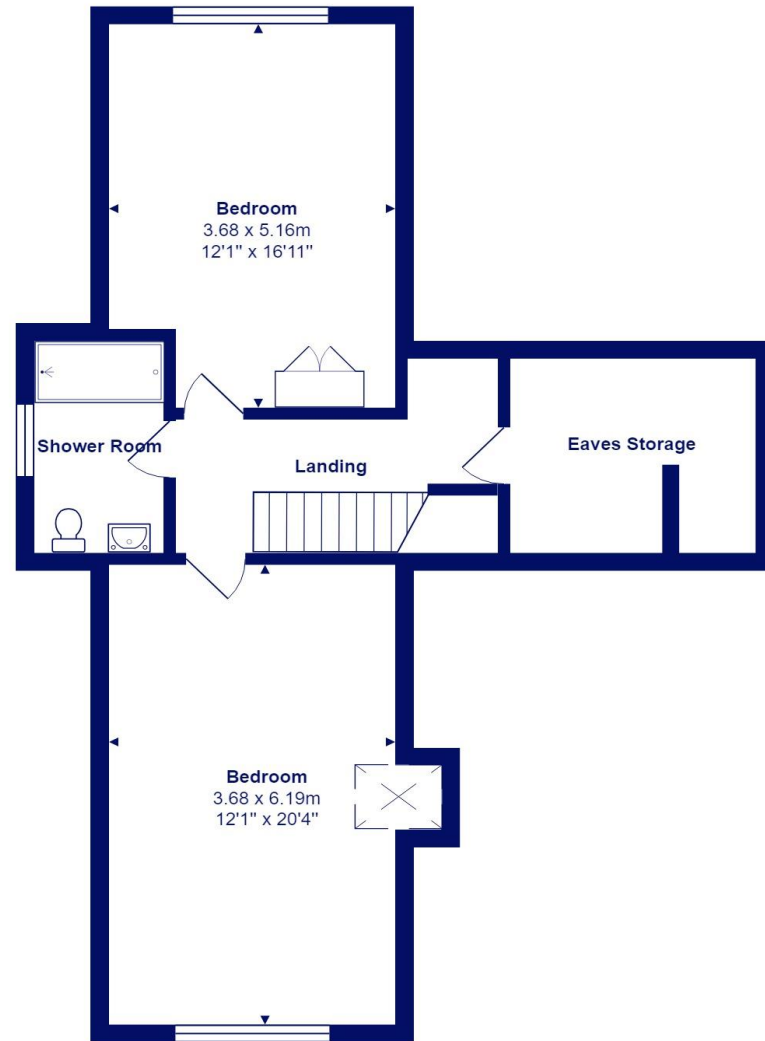


Location

Friars Cliff has long been one of the most sought-after residential locations of choice for people looking to move to a seaside location within East Dorset, with its sandy award winning beaches, cafes and famous beach huts. Friars Cliff affords views over Christchurch Bay to the Needles on the Isle of Wight to the south and towards Hengistbury Head and Christchurch Harbour to the west. Perfect for families and retirement living, with the historic Priory town of Christchurch within two miles distant and with access to London in under two hours from the mainline station at Hinton Admiral.



Ground Floor



First Floor



Total Area: 179.9 m² ... 1937 ft²
All measurements are approximate and for display purposes only







284 Lymington Road, Highcliffe on Sea, Christchurch, Dorset BH23 4TH highcliffe@mitchells-estateagents.co.uk

01425 272206

mitchells.uk.com