

LINGWOOD AVENUE
MUDEFORD, BH23 3JS





£899,950 FREEHOLD

A wonderful chalet in a first-class location featuring stylish accommodation of approximately 1,800 sq .ft. Thoroughly refurbished and skillfully extended, this very smart home features a crisp, contemporary interior and generous room sizes and has a private rear garden with parking to the front. The property is situated just moments from Stanpit Marsh Nature Reserve and the public slipway on Fisherman's Bank and just a short stroll to Mudeford Quay and Avon Beach. Strongly recommended.

FOUR BEDROOMS • MASTER BEDROOM WITH EN-SUITE • LUXURY FAMILY BATHROOM • OPEN PLAN LIVING SPACE • BI-FOLDS ONTO GARDEN • UTILITY ROOM • GARAGE • OFF ROAD PARKING



The Property

- First class chalet of approximately 1,800 sq ft
- Stunning inside and out, having been completely modernised.
- Master bedroom with luxury en-suite shower room (ground floor)
- Three further bedrooms and luxury family bathroom
- Impressive open plan kitchen/living/dining room with bi-fold doors onto the garden
- Generous utility room
- Tasteful décor and quality floor coverings
- Gas fired central heating and UPVC double glazed replacement windows
- Delightful landscaped garden with areas for outdoor entertaining
- Plenty of parking to the front and integral garage
- Excellent location within the Mudeford schools' catchment area and within walking distance of the local shops, beach and award winning pubs and restaurants.
- A highly desirable property in a very sought after road
- Council tax band 'G' £2093.92 EPC rating 'C'





Location

Mudford began as a small fishing village close to the entrance of Christchurch Harbour which still sees fishing boats landing their catch today. The area enjoys award winning sandy beaches at Avon beach and plenty of wildlife activity on Hengistbury Head and Stanpit Marsh Nature Reserve. The popular Mudford Sandbank attracts visitors every year to the private beach huts with the Harbour providing a sheltered environment for watersports activities. With a friendly, community feel, it is no wonder Mudford is becoming a popular choice for relocation.

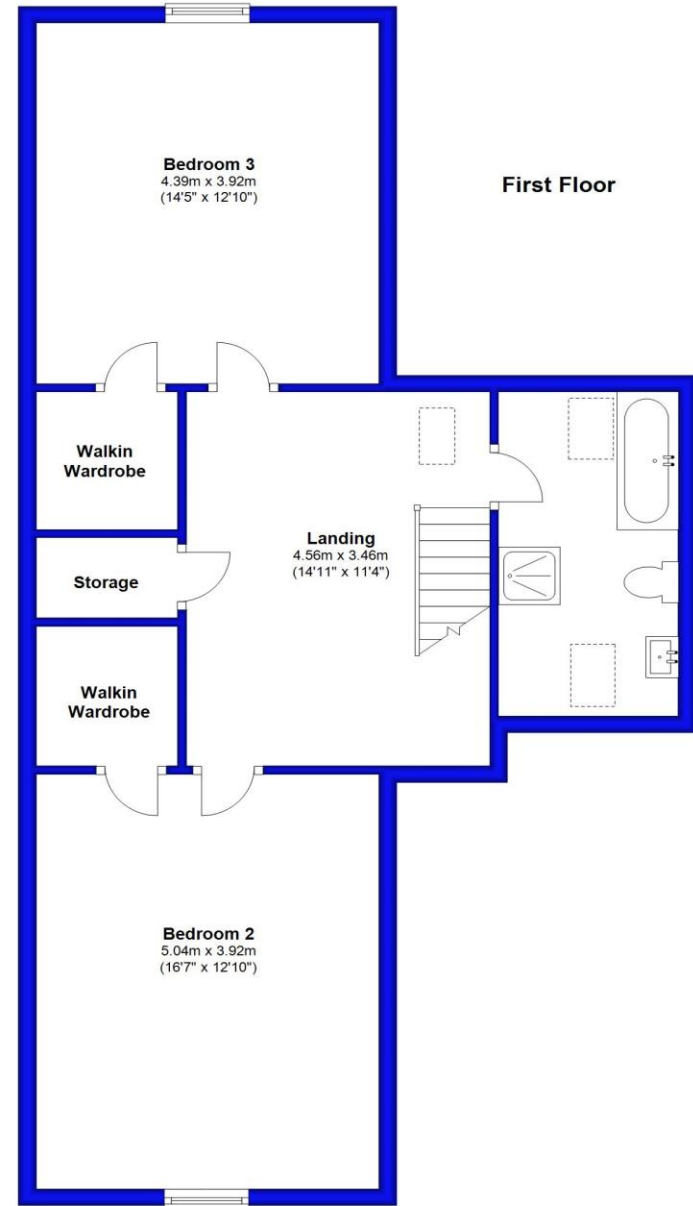
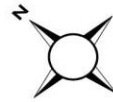
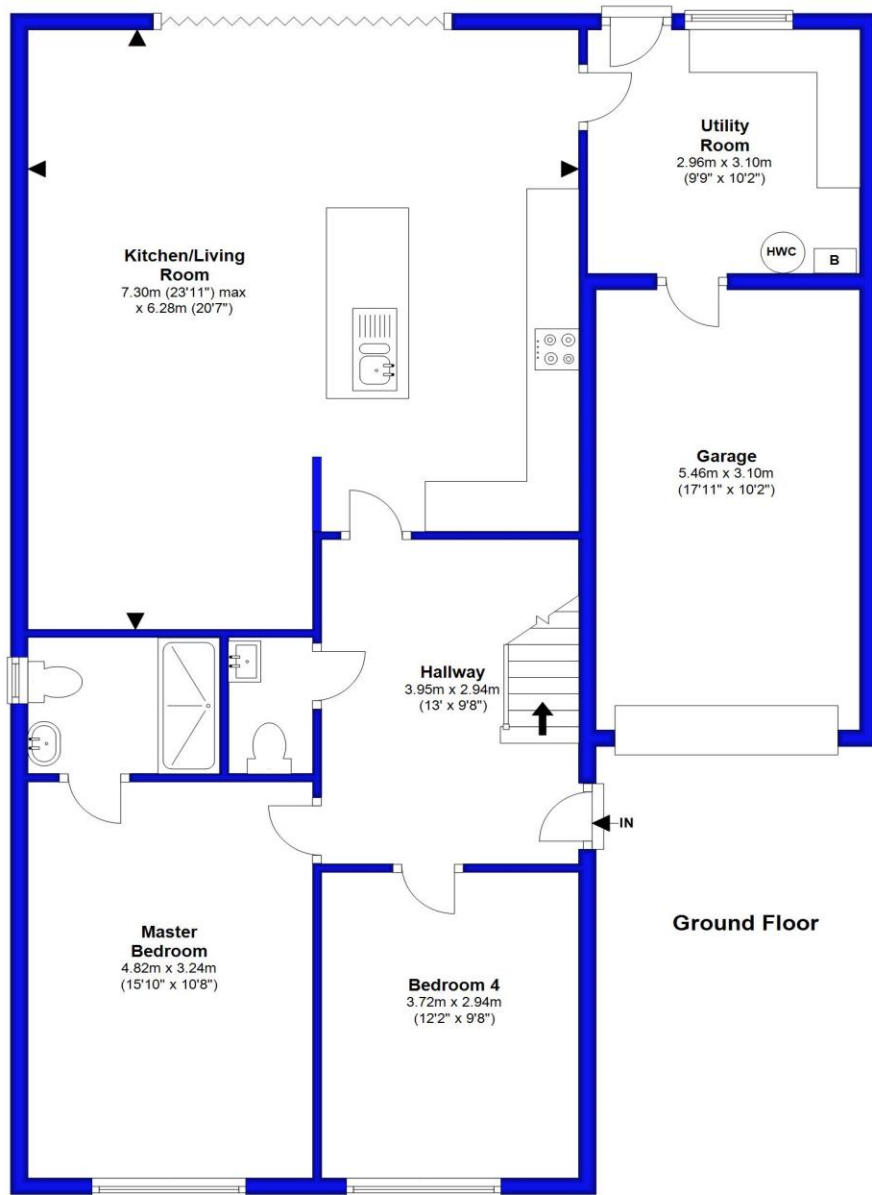


Illustration for identification purposes only; measurements are approximate, not to scale. EPC South Coast Surveys Plan produced using PlanUp.





Cambridge House, 112-114 Stanpit, Christchurch, Dorset BH23 3ND mudeford@mitchells-estateagents.co.uk

01202 499295
mitchells.uk.com