

60 STANPIT
CHRISTCHURCH, BH23 3NA

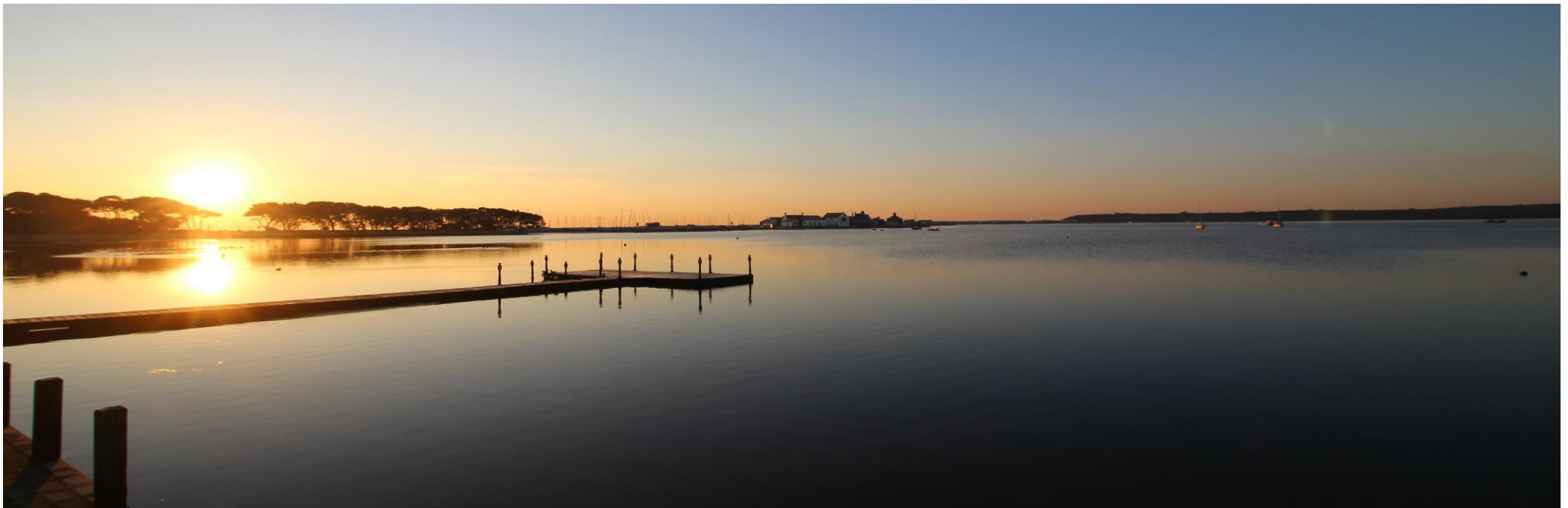




£497,500 FREEHOLD

A spacious and immaculately presented end terrace house of approx. 1255sqft situated in the heart of this sought after area with Stanpit Marsh, Mundeford Quay and the centre of Christchurch all just a short stroll away. This character property features high ceilings, generous room sizes and a south facing courtyard style rear garden.

- THREE BEDROOMS • TWO BATH/SHOWER ROOMS (ONE EN-SUITE) • KITCHEN • LOUNGE
- DINING AREA • GF WC • GARDEN •



The Property

- Delightful character property in immaculate order
- Three first floor double bedrooms
- Four-piece family bathroom and ensuite shower room
- Downstairs w/c
- Kitchen with access onto the garden
- Spacious lounge with character features
- Separate dining room
- Beautifully presented inside and out
- South facing courtyard style rear garden
- Located in the heart of Stanpit
- Council Tax 'E' £2559.23
- EPC 'D'

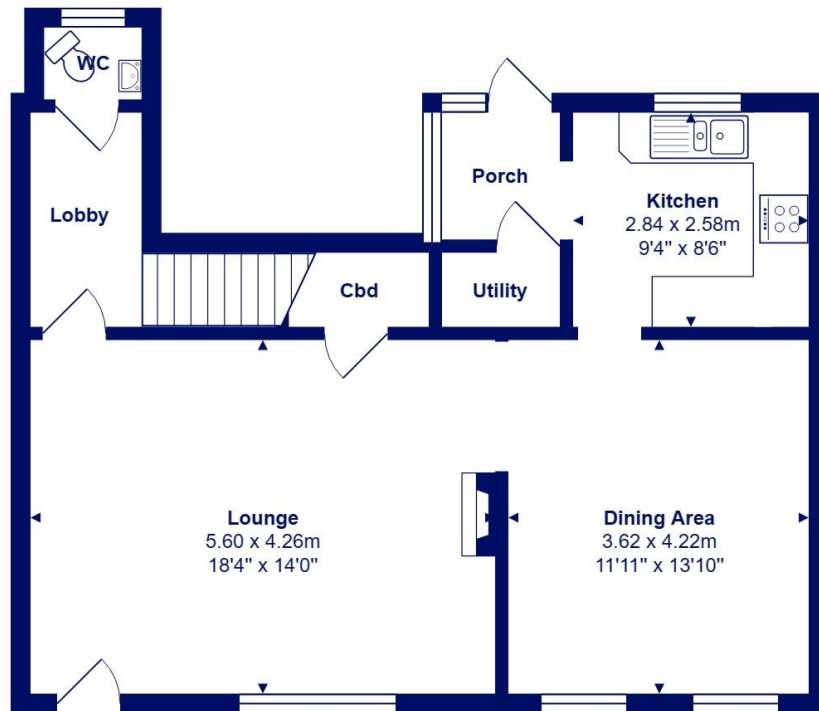




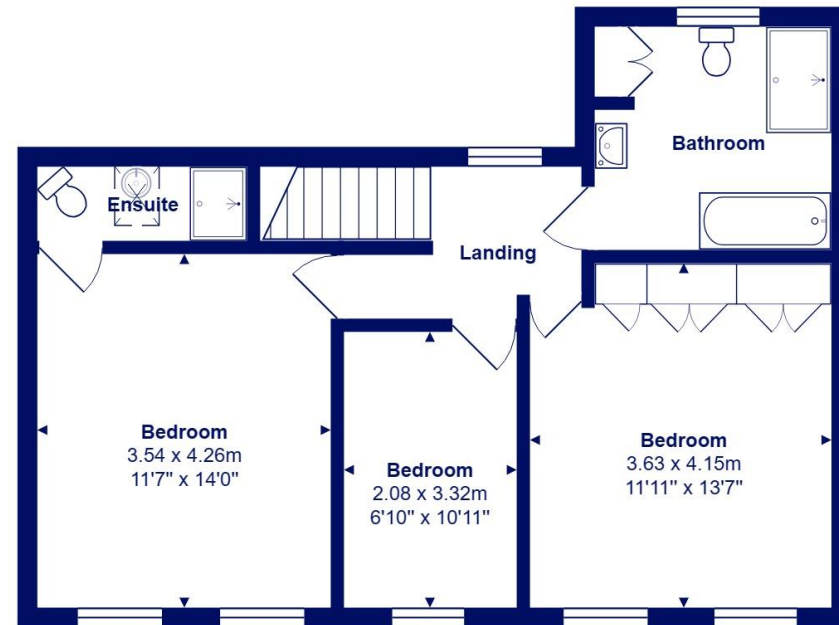
Location

Situated right in the heart of this bustling area with Stanpit Marsh Nature Reserve, award-winning pubs and restaurants, the historic Mudeford Quay, Hengistbury Head and award-winning beaches all within easy walking distance.





Ground Floor



First Floor



Total Area: 116.4 m² ... 1253 ft²

All measurements are approximate and for display purposes only







Cambridge House, 112-114 Stanpit, Christchurch, Dorset BH23 3ND mundeford@mitchells-estateagents.co.uk

01202 499295
mitchells.uk.com